



Food and Agriculture
Organization of the
United Nations



GLOBAL SYMPOSIUM ON SALT-AFFECTED SOILS

20 - 22
October, 2021
Virtual meeting

Mst. Arifunnahar
Senior Scientific Officer
Soil Resource Development
Institute, Bangladesh
www.srdi.gov.bd



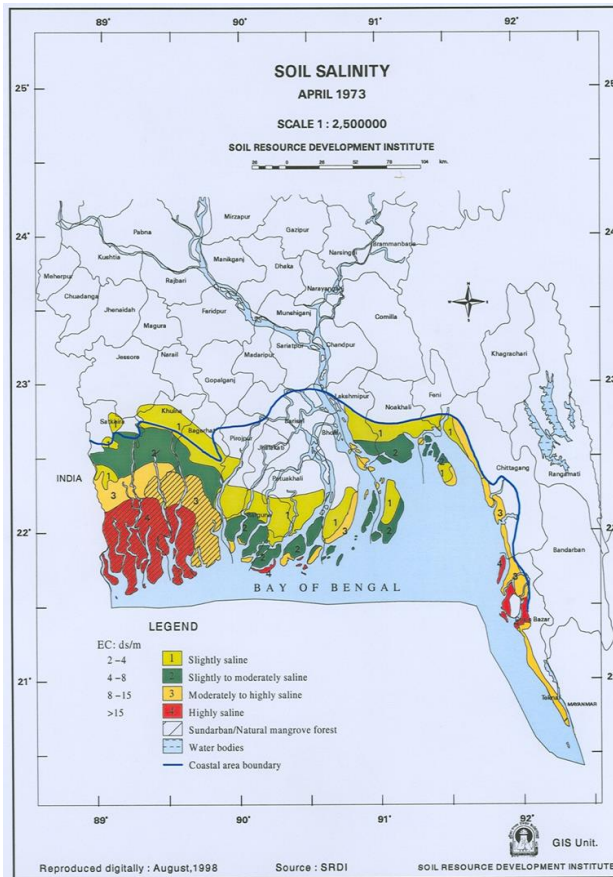
Bangladesh

Bangladesh, a deltaic plain, has a very **flat** and **low topography** except in the northeast and southeast region.

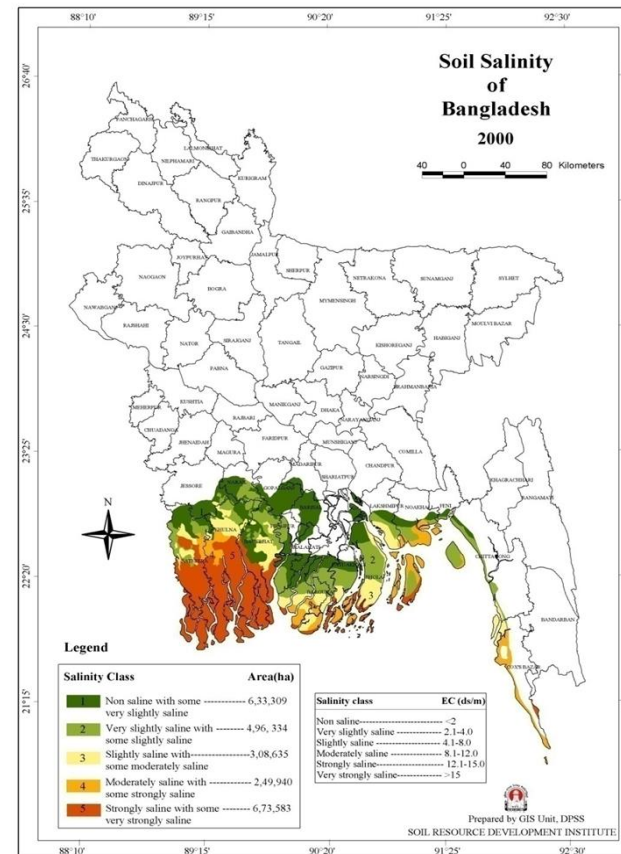
The surface area in Bangladesh is currently at 147,570 km². About 10% area of the country is hardly **1m** above the mean sea level and one-third is under tidal excursions.



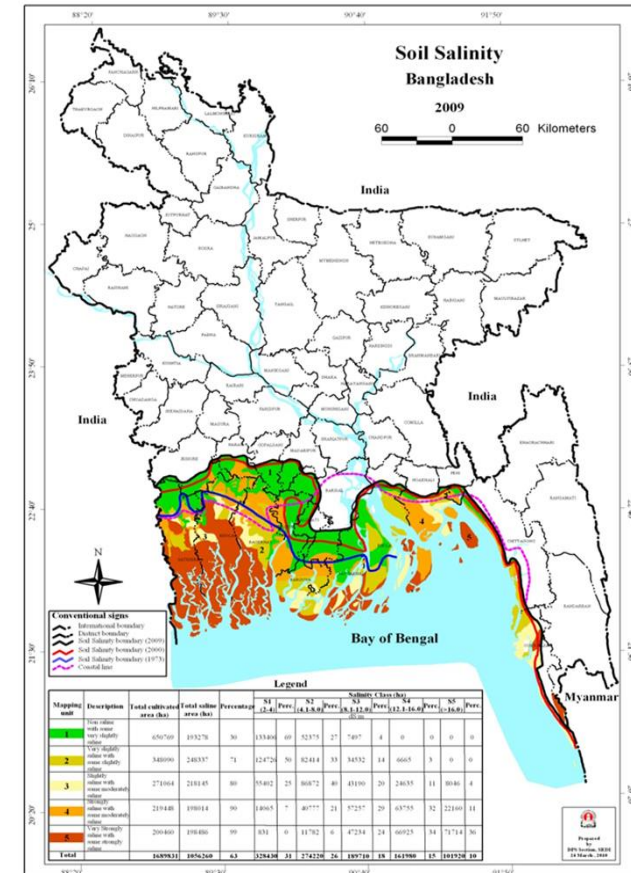
Soil Salinity Status in Bangladesh



1973, Salt affected area-
833.45 (000' ha)

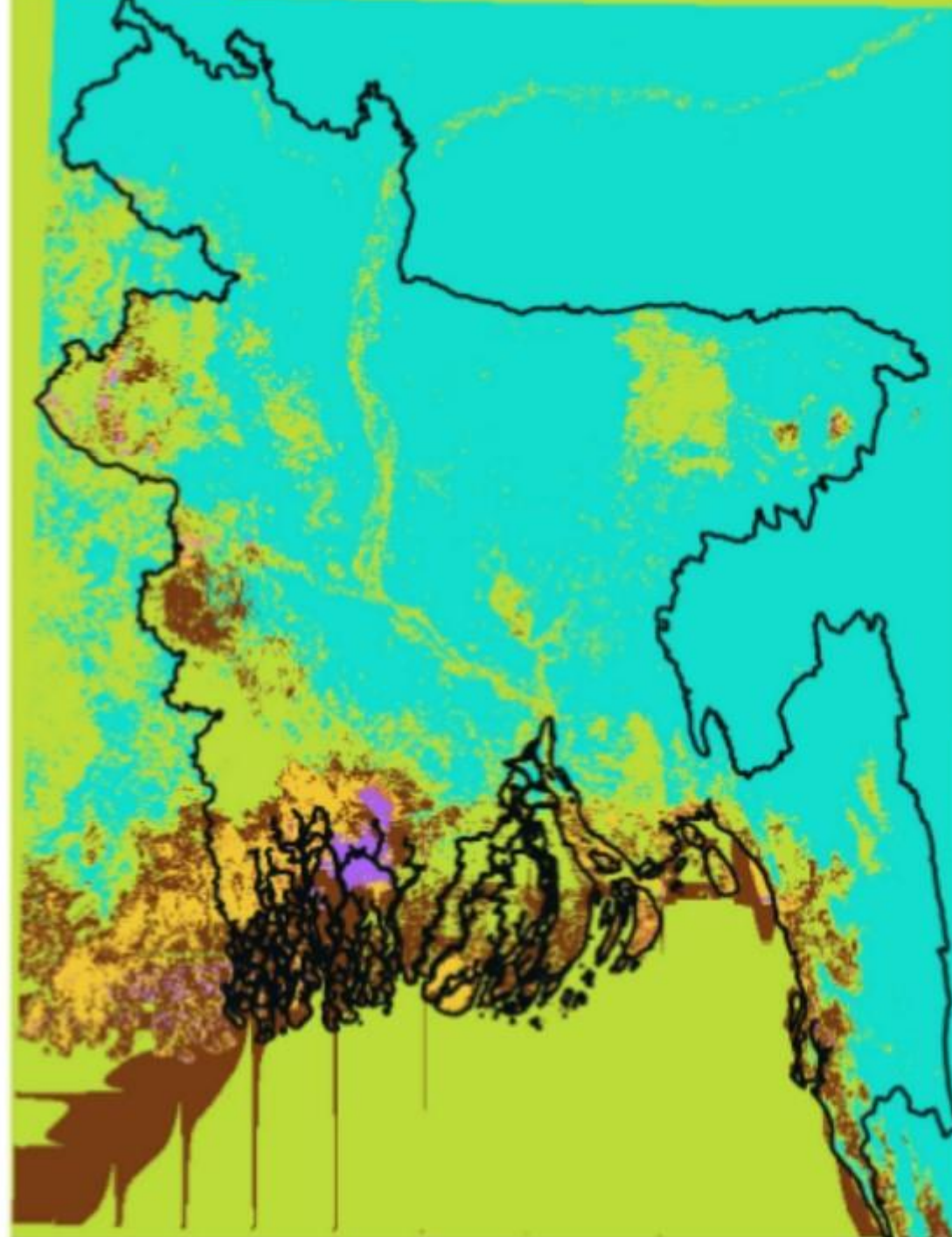


2000, salt affected area-
1020.75 (000' ha)



2009, Salt Affected area-
1056.26 (000' ha)

**Soil Saline
Map for
0_30m depth
using DSM
method**



Causes of Salinity in Bangladesh

Nor Parent material or mineral is responsible for soil salinity in Bangladesh. The causes of salinity intrusion are-

- Withdrawal of fresh river water from upstream
- **Brackish water shrimp** cultivation
- Frequent inundation of land with tidal bore
- Improper distribution of precipitation through out the year.
- Faulty management of sluice gates and polders
- Capillary rise of soluble salts during dry period
- Poor drainage facilities

Saline Soil Management in Bangladesh



Pitcher Irrigation for pit crops



Double layer Mulch





Transplanting method of maize



Dibbling method of maize

Screening of salt tolerant Variety



Picture: Different varieties of bitter gourd



Crop cultivation at gher bank

Saline Soil Management in Bangladesh



Farm Pond Technology at farmer's field

Thanks

