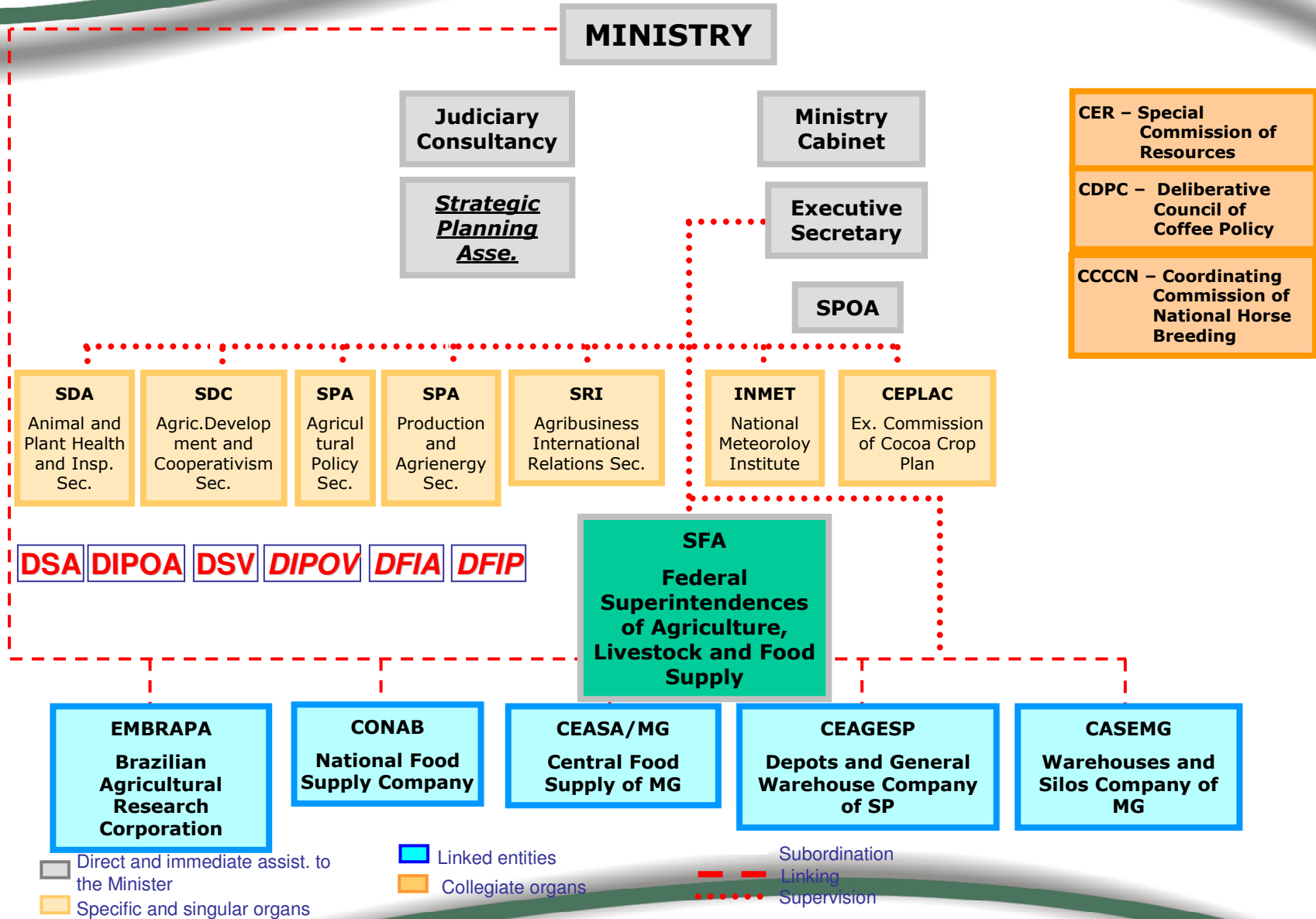




Animal and Plant Health and Inspection Secretariat – SDA Transboundaries pests and diseases in Brazil

Ministry of Agriculture, Livestock and Food Supply

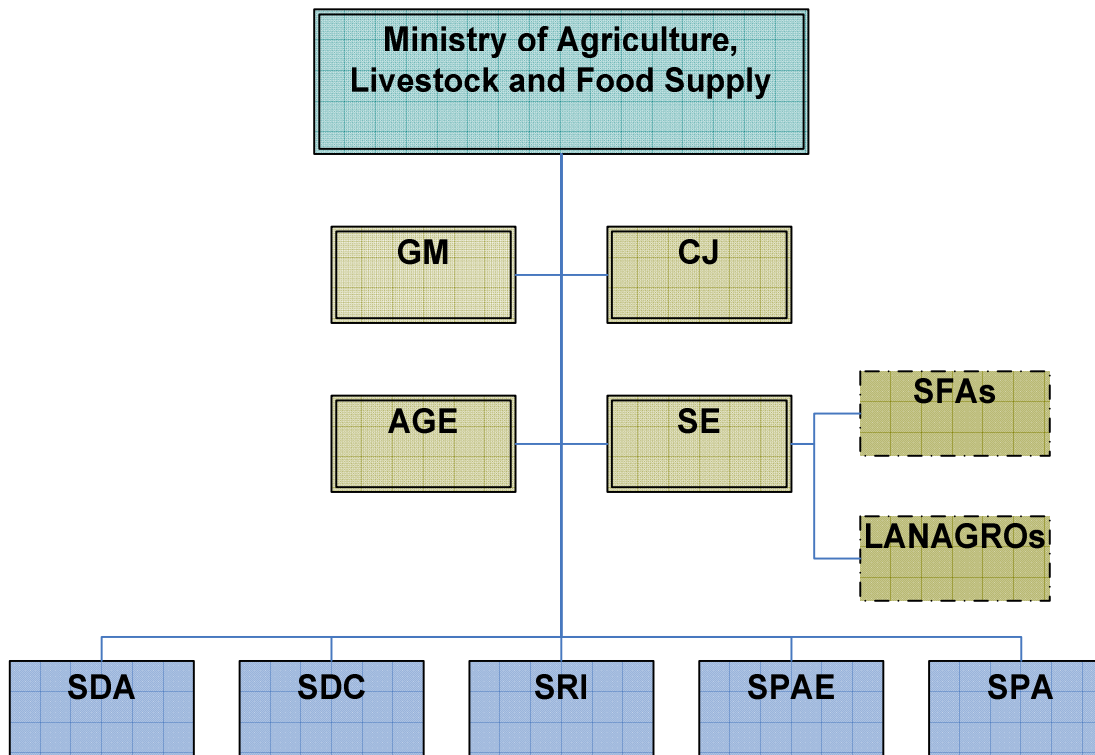




Ministry of Agriculture, Livestock and Food Supply



MAPA STRUCTURE



GM – Cabinet of the Minister

CJ – Legal Advisory Office

AGE – Assessorship of Strategical Management

SE – Executive Secretariat

SFAs – Federal Agricultural Superintendence

LANAGROS - National Agricultural & Livestock Laboratory

SDA – Secretariat of Animal and Plant Health

SDC – Secretariat of Agricultural Development and Cooperativism

SRI – Secretariat of Agribusiness International Relations

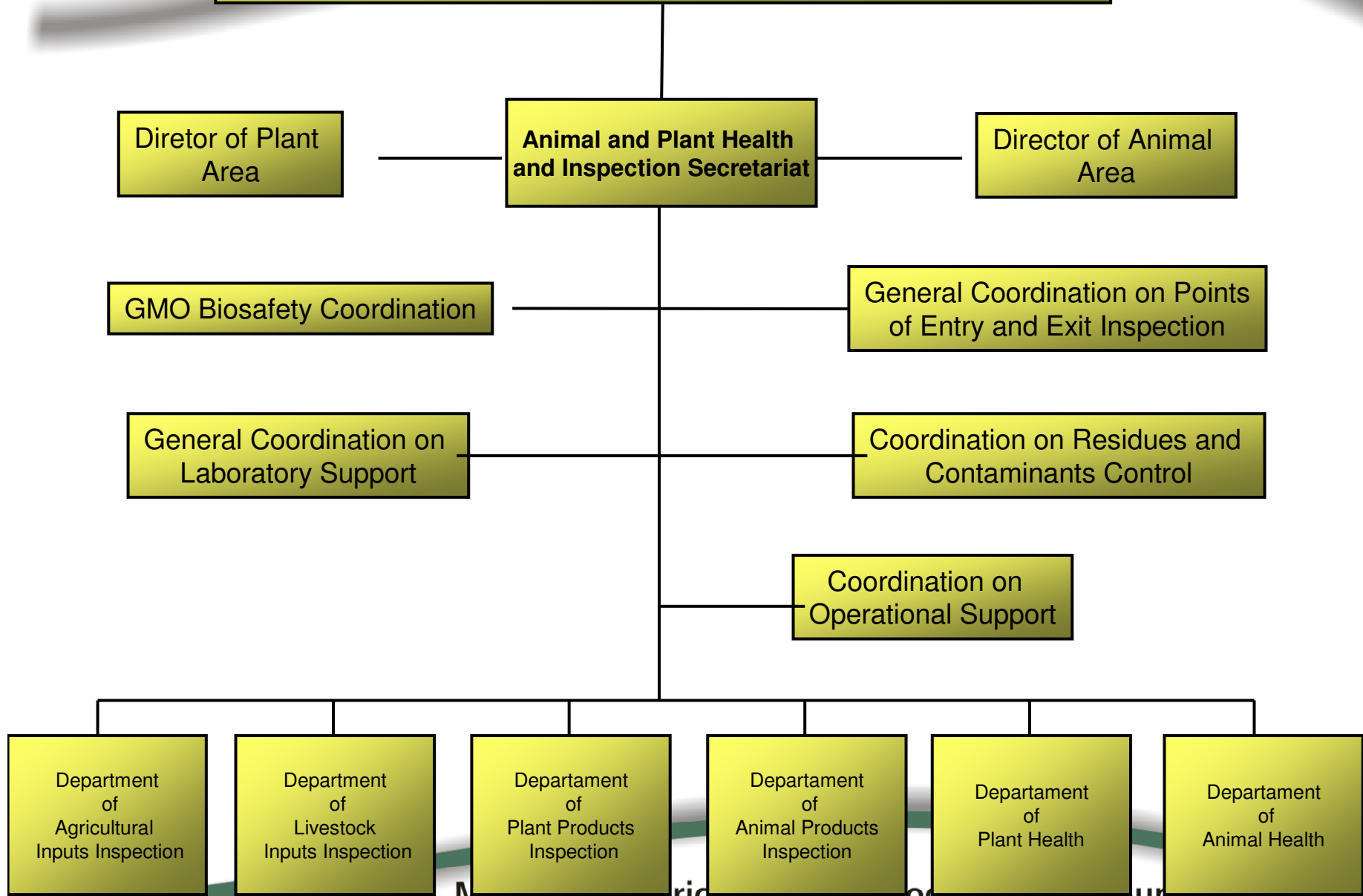
SPAE – Secretariat of Production and Agroenergy

SPA - Secretariat of Agricultural Policy

Ministry of Agriculture, Livestock and Food Supply



Ministry of Agriculture, Livestock and Food Supply



RESPONSIBILITIES OF ANIMAL AND PLANT HEALTH AND INSPECTION SECRETARIAT

- Prevention, control and eradication of animal diseases and plant pests of economic and public health interest**
- Provide sanity, conformity and food safety of animal and plant origin products.**
- Provide sanity and conformity of inputs for plants and animals**



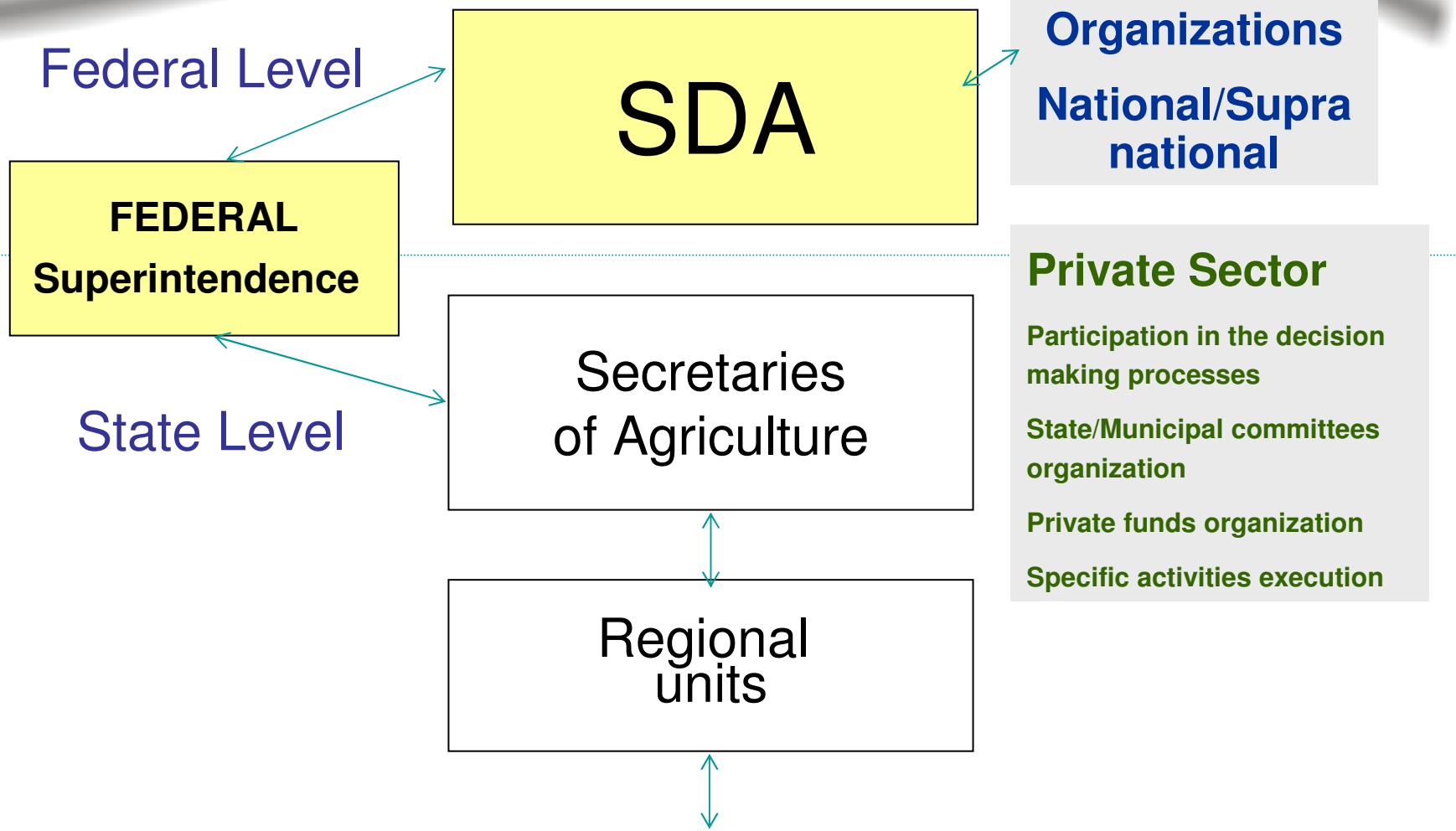
SDA MAIN AREAS OF ACTION

- DSV and DSA – plant and animal health.**
- DIPOV and DIPOA – plant and animal products.**
- DFIA and DFIP – inputs for agriculture and livestock**



SDA SUPPORT AREAS

- Laboratory support**
- Points of entry and exit inspection**
- Biosecurity - GMOs**
- Residues and contaminants control**
- Budget and financial support**



Ministry of Agriculture, Livestock and Food Supply

● **PORTOS ORGANIZADOS - 31**



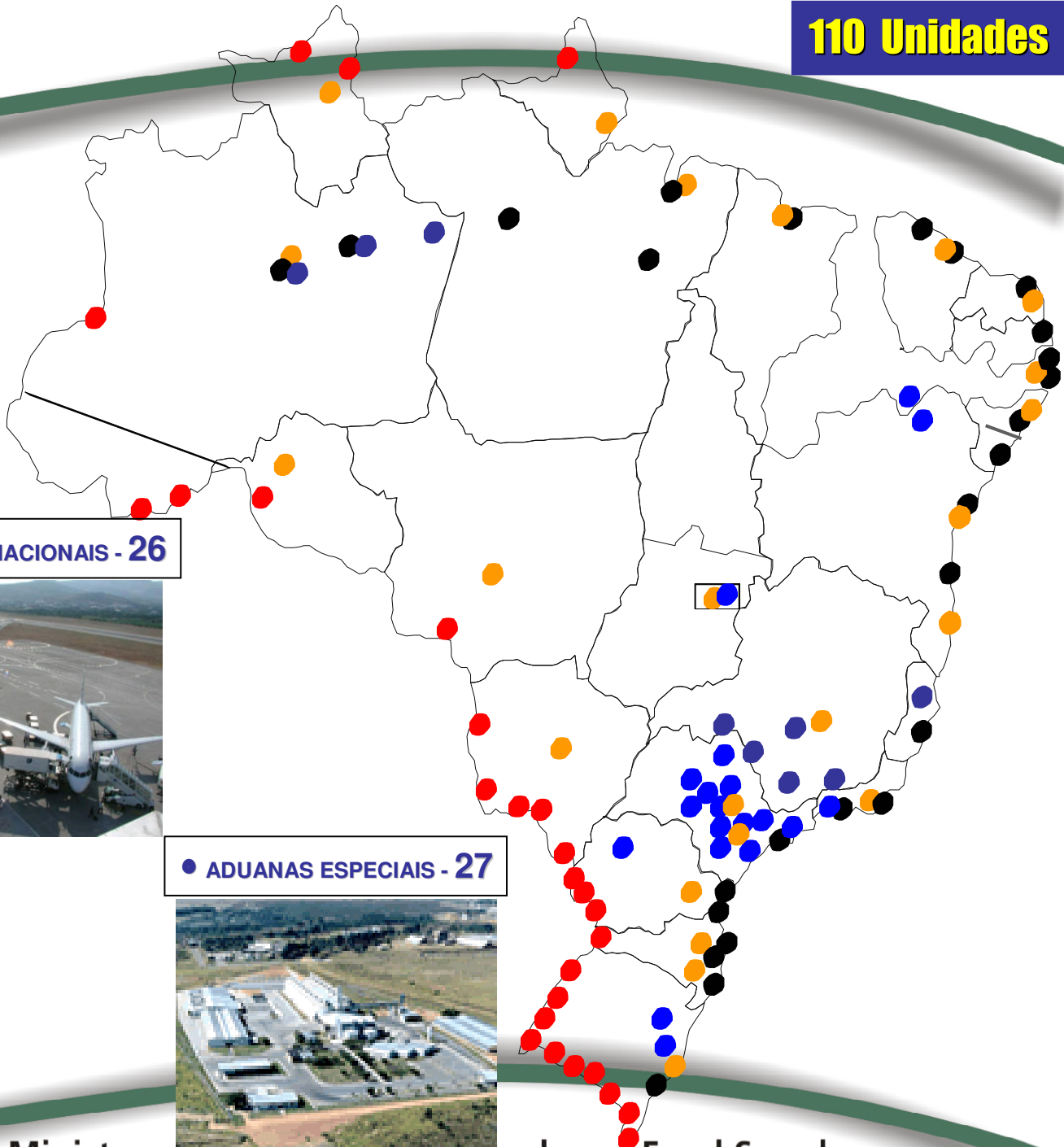
● **AEROPORTOS INTERNACIONAIS - 26**



● **PONTOS DE FRONTEIRAS - 26**



● **ADUANAS ESPECIAIS - 27**





Transboundary pests and diseases

Research and official actions in Brazil



Preliminary EMBRAPA study on plant pest climate change

Main objective

Definition of Brazilian quarantine pest plants list that could impact agroenergy supply based on qualitative pest risk analysis .

The next step is to evaluate the potential establishment of these pests pest in Brazil in different climate conditions and produce management risk options.

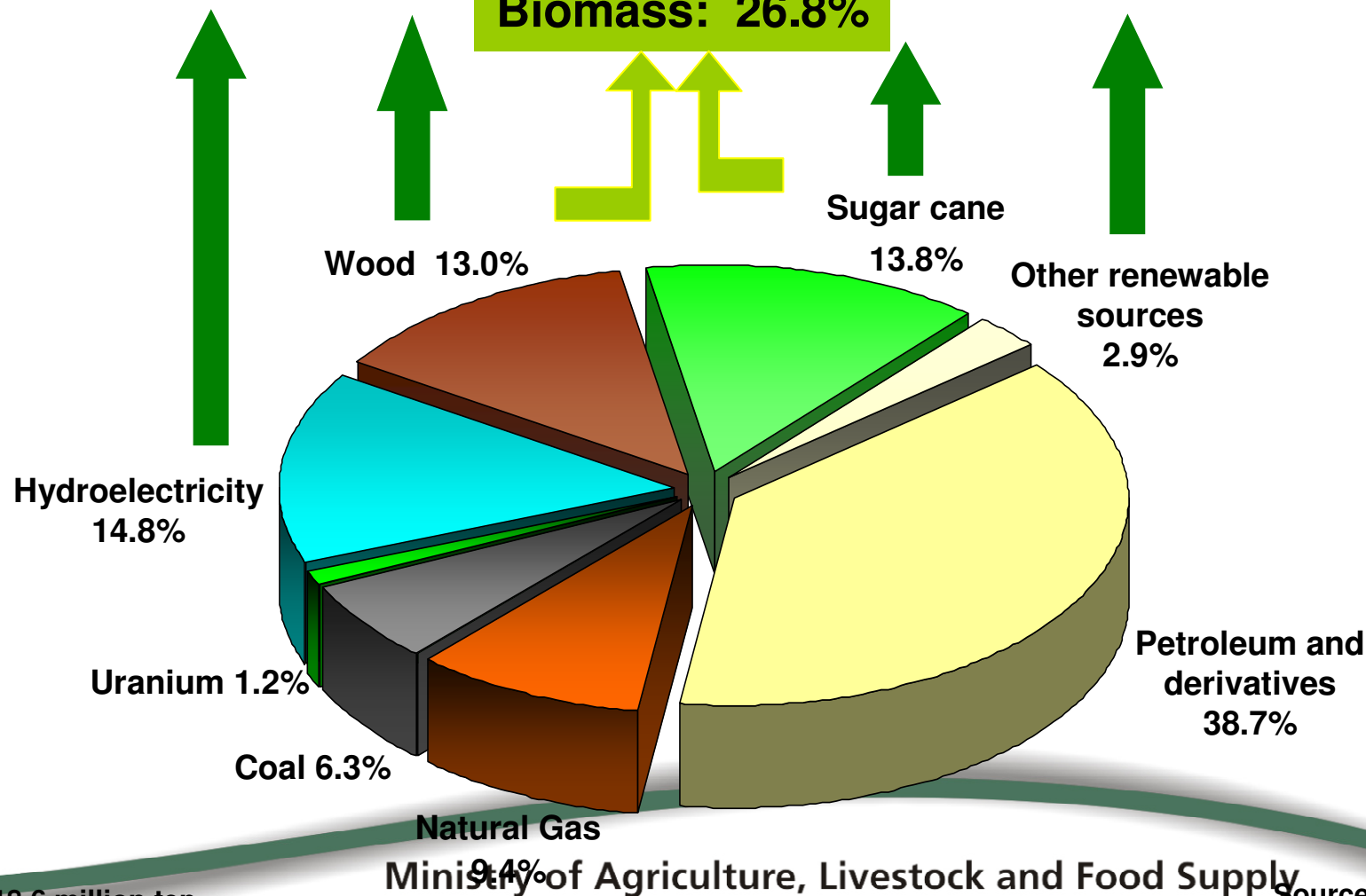


Brazilian energetic matrix - 2005

WORLD: Renewable Sources 13.3%

BRAZIL: Renewable Sources 44.5%

Biomass: 26.8%



100% = 218,6 million tep

Ministry of Agriculture, Livestock and Food Supply

Source: BEN 2006

Saccharum officinarum (sugar cane)
Cocos nucifera (coconut)
Elaeis guineensis (palm oil):
Arachis hypogaea (peanuts),
Ricinus communis (castor bean),
Glycine max (soybean),
Helianthus annuus (sun flower),
Gossypium hirsutum (cotton)
Brassica napus x Brassica rapa (canola),
Jatropha curcas (“pinhão-manso”)
Quarantine forest pests

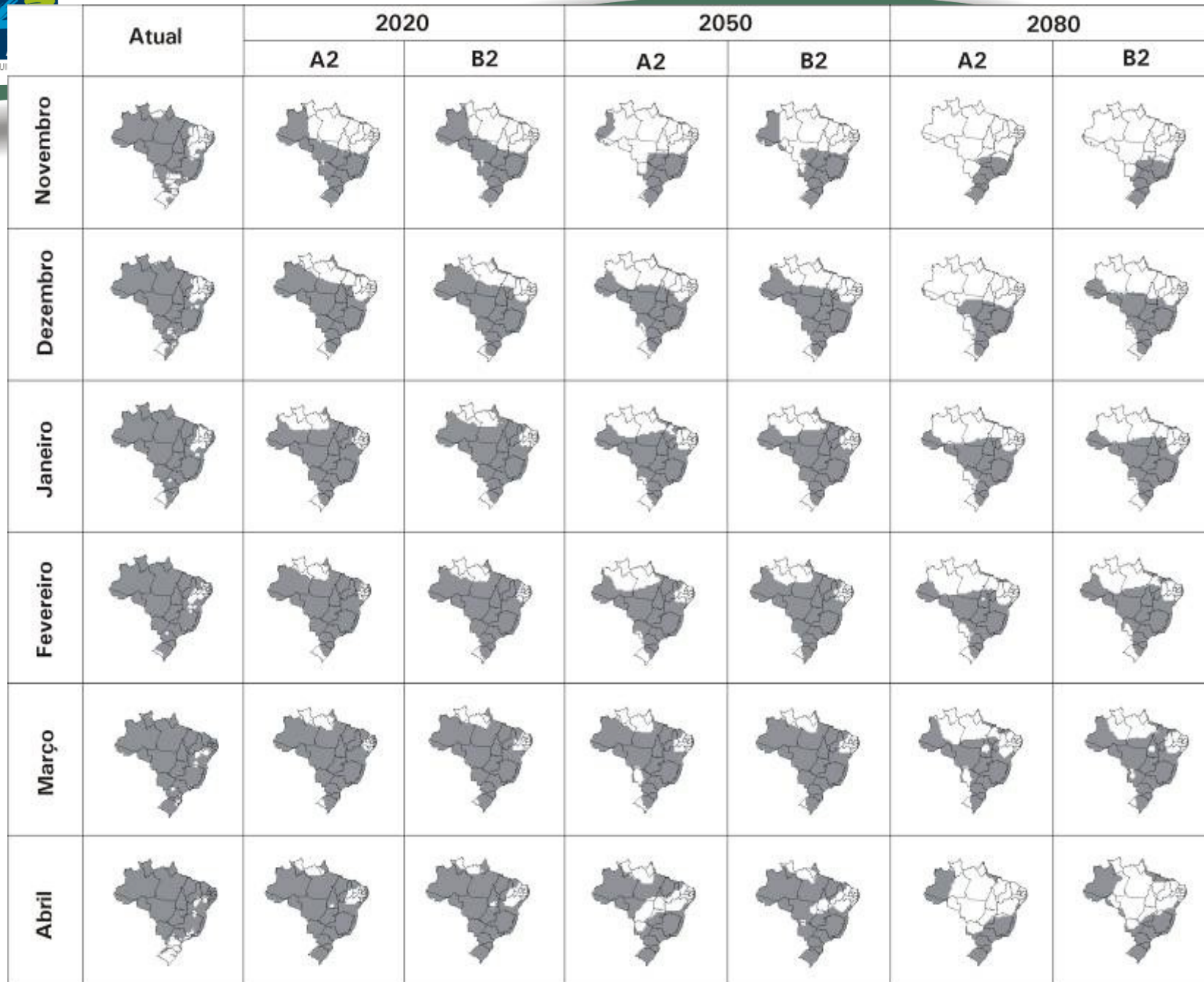
Ghini & Hamada (2008) - Capítulos:



- Batata
- Tomate
- Pimentão
- Melão
- Arroz
- Cereais de inverno
- Milho
- Soja
- Bananeira
- Cana-de-açúcar
- Cafeeiro
- Citros
- Seringueira
- Eucalipto
- Fitonematóides
- Controle biológico
- Controle químico



Sigatoka negra - bananeira



□ Desfavorável ■ Favorável



	Atual	2020		2050		2080	
		A2	B2	A2	B2	A2	B2
Maio							
Junho							
Julho							
Agosto							
Setembro							
Outubro							

□ Desfavorável ■ Favorável



Research leaders

Potential quarantine pest list

vilarin@cenargen.embrapa.br

Climate change impact on crops and plant pests

raquel@cnpma.embrapa.br

Main results in relation to the research forecast

- **generates strategic directions for new varieties (ex. more drought tolerance)**
- **more support for agriculture policies in order to stimulate crops in favorable ecological and economic zones by credit and other means**
- **exchange datas in regional level**
- **how about exchange multilateral datas on these matters?**



Main difficulties in relation to the research forecast

- generates data from different climate models**
- needs of more detailed data for national or regional approach**
- incorporate climate change inputs in risk analysis**
- integrate efforts of many different agencies**



Animal Diseases Mercosul and Associated Countries Transboundary Animal Diseases and Pests

- **FAO – TCP and BIRD support**
- **Requested by CAS Ministries**
- **Objective – propose national projects for integrated measures for certain animal pests and diseases in a regional perspective**
- **National Coordinators**



Animal Diseases Mercosul and Associated Countries Transboundary Animal Diseases and Pests

Seminar in Brazil next March

- **point out clearly the main problems**
- **establish objective**
- **establish strategies to achieve objective**
- **more support for national veterinary services**
- **integration of actions in the region**



Animal Diseases Mercosul and Associated Countries Transboundary Animal Diseases and Pests

- **FMD**
- **Avian Influenza**
- **New Castle Disease**
- **Classical Swine Fever**
- **Screw worm**



Ubicación histórica de los focos de fiebre aftosa a virus tipo "O" en el período 1998-2006
 Dr. Luis Eduardo Días



Conclusions

- **Integrated approach between agriculture, environment, health and energy supply**
- **Regional efforts**
- **Stimulate multilateral cooperation on these matters**

Ministry of Agriculture, Livestock and Food Supply



Thanks

odilson.silva@agricultura.gov.br

Ministry of Agriculture, Livestock and Food Supply