

# Trends in illegal logging & forest governance

---

Alison Hoare

Senior Research Fellow, Energy, Environment & Resources Department


APFW WEEK: 22-26 February 2016



Producer countries: Brazil, Cameroon, DRC, Ghana, **Indonesia**, **Laos**, **Malaysia**, **PNG**, Rep. of Congo

Processing countries: **China**, **Thailand**, **Vietnam**

Consumer countries: France, **India**, **Japan**, Netherlands, **South Korea**, UK, USA

A tropical river scene. In the foreground, a large palm tree stands on the right bank, its fronds reaching over the water. A small, thatched-roof hut is visible on the bank behind the palm tree. Several wooden boats are moored along the shore. The river flows towards a dense forest in the distance under a blue sky with light clouds. The text "Governance is improving, but..." is overlaid in white on the lower left side of the image.

**Governance is improving,  
but...**

# Summary policy scores – ‘producer’ countries

	HIGH-LEVEL POLICY	LEGISLATIVE FRAMEWORK	TENURE AND USE RIGHTS	CHECKS AND BALANCES	INTERNAT'L TRADE COOPERATION	RESOURCE ALLOCATION	SUPPLY AND DEMAND	INFORMATION AND MANAGEMENT	FINANCIAL MANAGEMENT	TRANSPARENCY	TIMBER CHAIN OF CUSTODY	LAW ENFORCEMENT
INDONESIA												
2008	Orange	Orange	Yellow	Yellow	Red	Orange	Yellow	Red	Orange	Red	Orange	Orange
2013	Yellow	Orange	Yellow	Yellow	Orange	Yellow	Green	Yellow	Yellow	Yellow	Yellow	Yellow
MALAYSIA												
2008	Orange	Yellow	Yellow	Yellow	Red	Green	Red	Orange	Green	Yellow	Yellow	Orange
2013	Orange	Red	Yellow	Orange	Red	Orange	Yellow	Yellow	Orange	Orange	Orange	Yellow
LAOS												
2013	Red	Red	Yellow	Red	Red	Orange	Orange	Orange	Orange	Red	Red	Red
PNG												
2013	Orange	Red	Yellow	Orange	Red	Yellow	Red	Red	Orange	Orange	Orange	Red

**There is less illegal logging  
in many countries, but...**



# Proportion of timber production from artisanal & small-scale producers

- Indonesia: tens of thousands of small-scale sawmills
- PNG: ~10% timber production by chainsaw millers
- Laos: 90% of teak plantation area = smallholders
- Chainsaw milling in Africa:
  - Cameroon – 50%; DRC – 90%; Ghana – 70%;

## Conversion timber

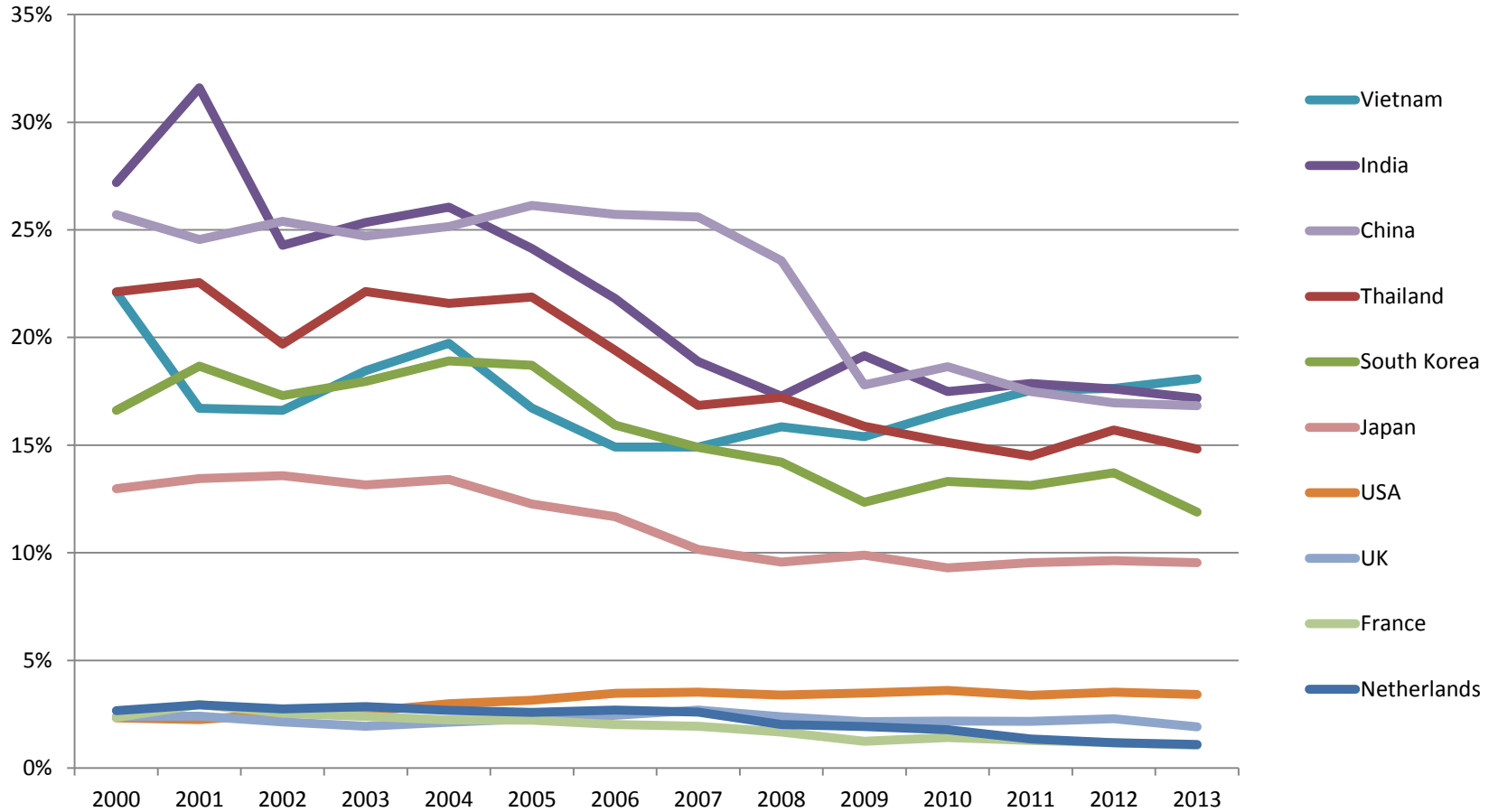
- Indonesia: 75% timber production from conversion (2000-12)
- Laos: 60% timber production from infrastructure projects (2008)
- Malaysia, Sarawak: >60% timber production from conversion (2010)
- PNG: 30% log exports from agricultural conversion (2012)

An aerial photograph of a vast lumber yard. The ground is paved and marked with white lines. Numerous large, rectangular stacks of cut logs are arranged in neat rows, extending into the distance. The logs are light brown and show the natural grain of the wood. In the foreground, a silver light pole with a black globe is visible. In the background, a body of water and some industrial structures are partially visible.

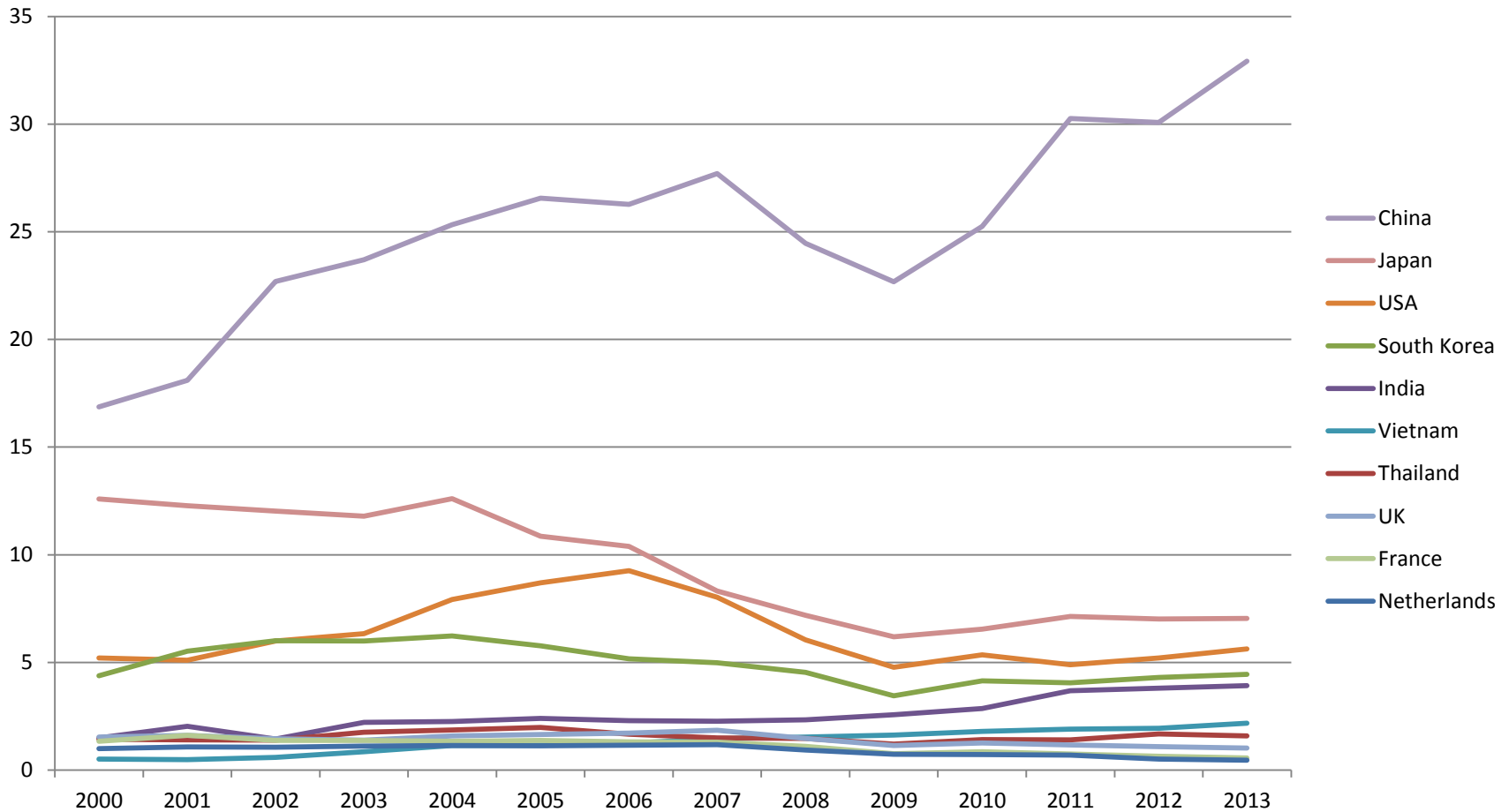
**The proportion of illegal timber imported into consumer & processing countries is declining, but...**



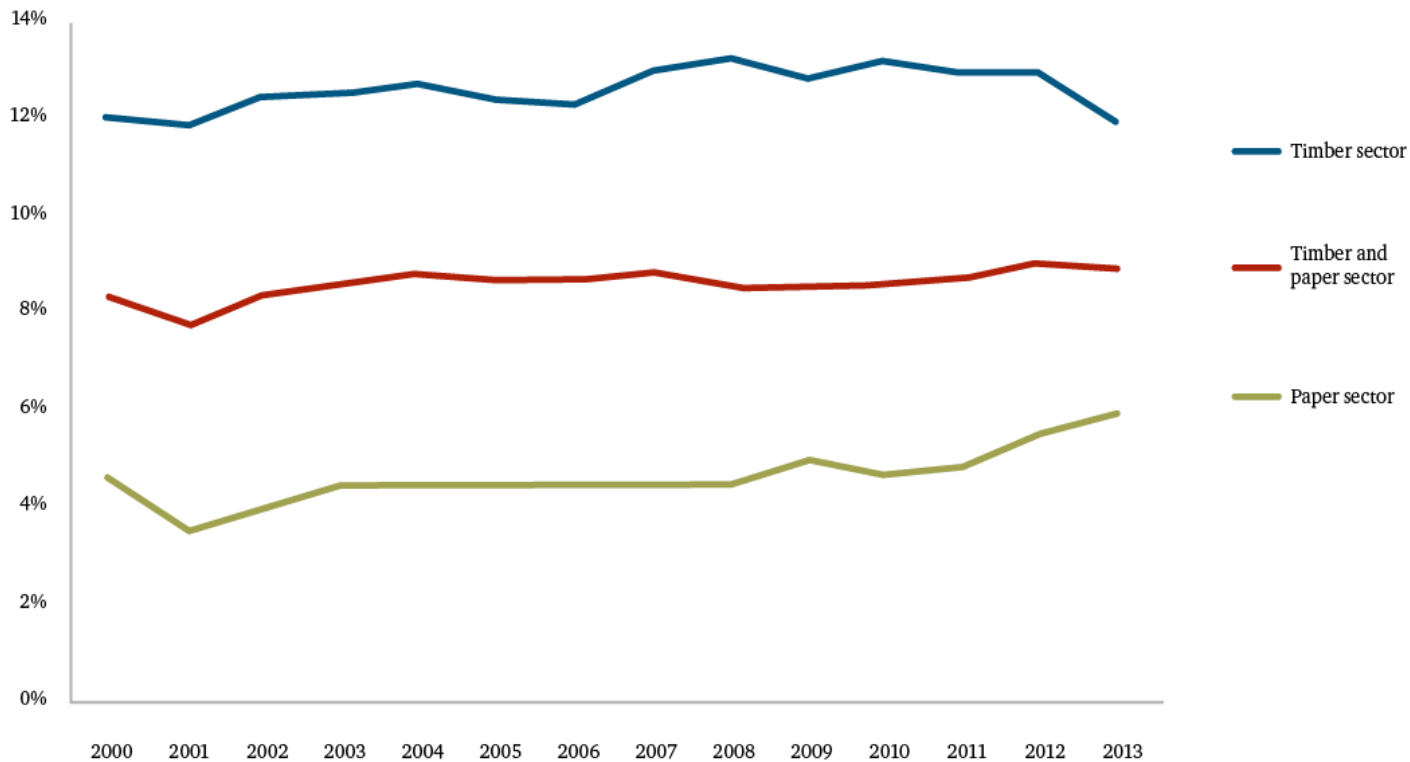
# Estimated percentage of imports of wood-based products at high-risk of illegality



# Estimated volume (RWE, million m<sup>3</sup>) of imports of wood-based products at high-risk of illegality



# Estimated percentage of imports at high risk of illegality for all 10 consumer & processing countries



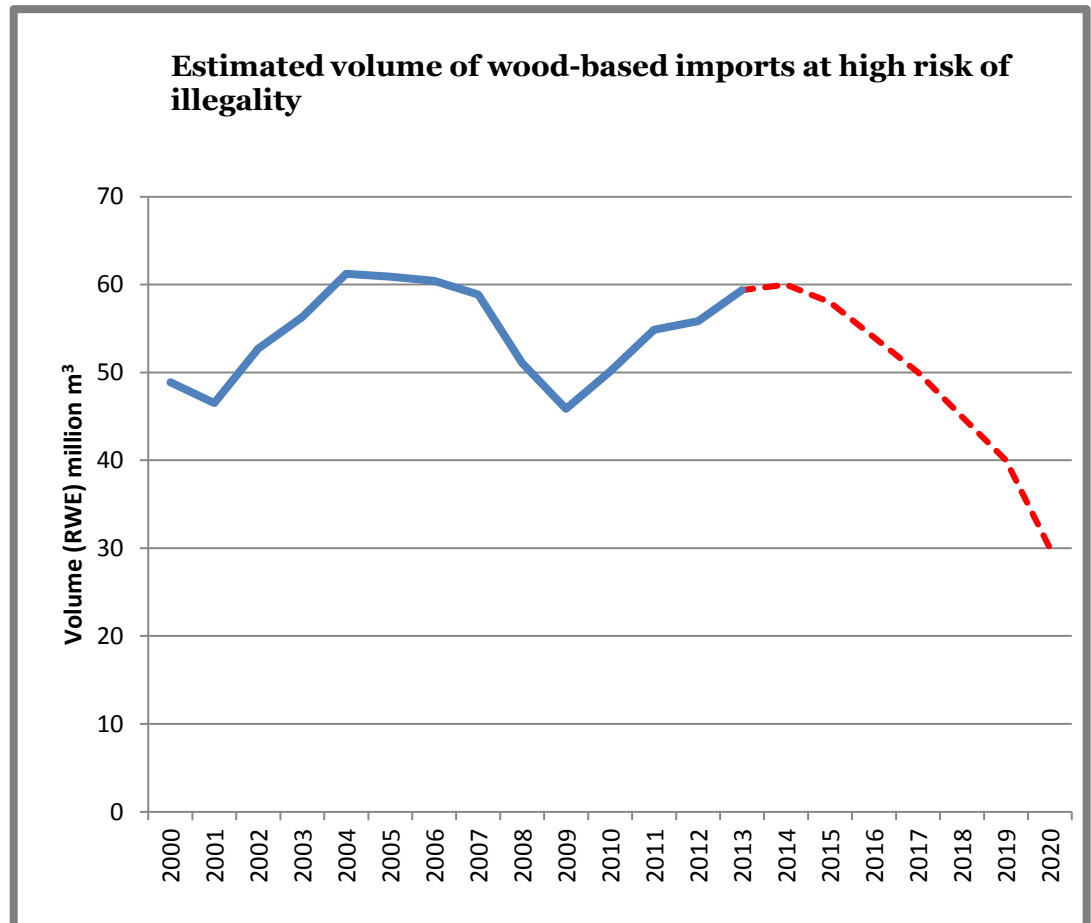
A low-angle photograph of a large, mature tree with a thick, gnarled trunk and numerous branches. The tree is covered in dense, vibrant green leaves. The background is a clear, bright blue sky. The text "So are we making progress?" is overlaid in white, serif font on the left side of the image.

**So are we making progress?**

# How to make this a reality?

Strengthen linkages with other policy agendas:

- Climate change – strengthening linkages between FLEGT & INDCs
- SDGs – developing national-level indicators for the small-scale sector



# Thank you

---

**Indicators project:** [indicators.chathamhouse.org](https://indicators.chathamhouse.org)

**The illegal logging portal:** [www.illegal-logging.info](http://www.illegal-logging.info)

Contact: [alhoare@chathamhouse.org](mailto:alhoare@chathamhouse.org)