

Climate Smart Landscapes: addressing trade-offs and delivering multiple benefits at scale

Richard McNally, Global Coordinator Climate Smart Agriculture

Asia Pacific Forest Week, Philippines, 24th February

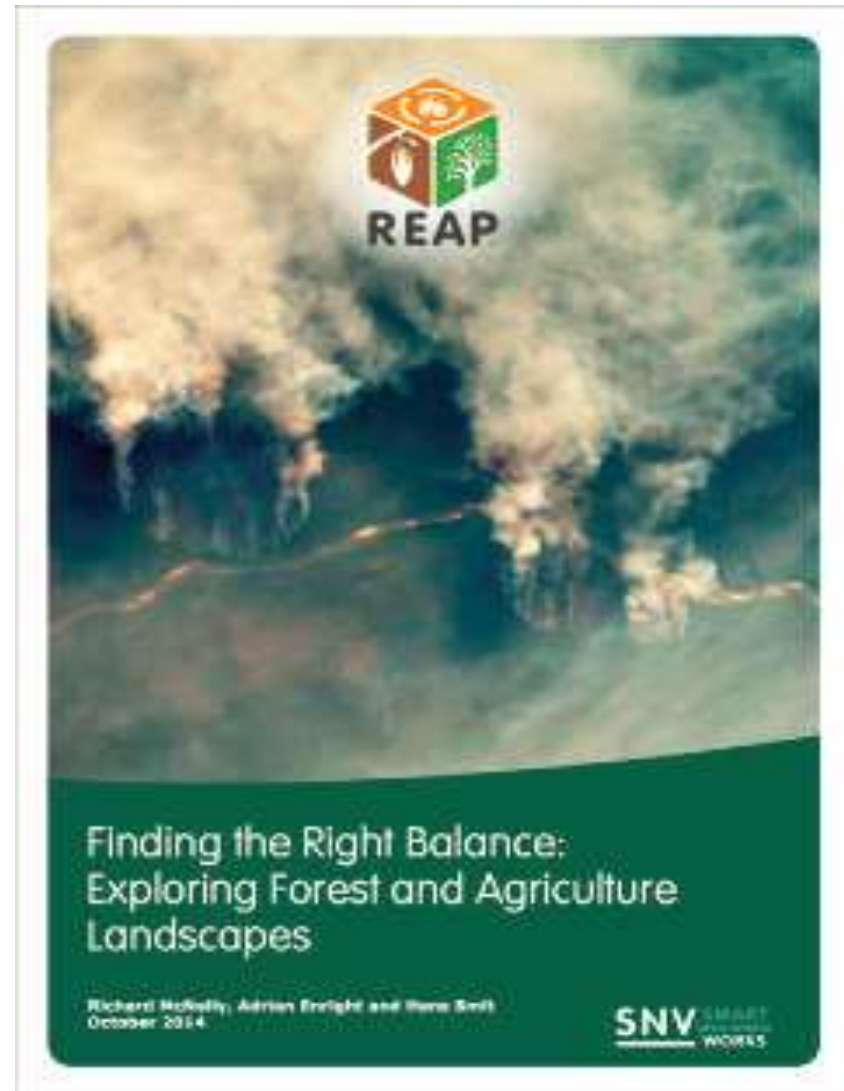


- SNV works across 35 countries and currently has over 1200 Advisors working in 3 focal sectors: *Agriculture*, *Renewable Energy* and *WASH*
- Global REDD+ and Inclusive business programs
- Cross cutting: 2013 established the REDD+, Energy and Agriculture Program
- Climate Smart Agriculture and Energy and Climate program

SMART
DEVELOPMENT
WORKS



For SNV REAP challenge was:
how do we balance the increasing demand for agricultural products (food demand by 70% by 2050) and local biomass energy needs whilst improving the livelihoods of local communities, *in a manner that does not continue the extensive clearing and/or degradation of forests and is responsive to climatic change*



Try to understand the agriculture-forest interface

- Evidence shows trade-offs forest conservation and agriculture devt the general *rule* (e.g. commodity booms). Win-wins exist.
- Draw on work (*Angelson and Kaimowitz 2002*); 8 key factors
- Different approaches depending on *type* of agriculture and *location* of forest-agriculture interface (*a landscape approach*)



SNV's Climate Smart Agriculture solutions

LANDSCAPE

Working across the wider landscape to achieve impacts at scale

SUPPLY CHAIN

Working with value chain actors to reduce deforestation in commodity supply chains

LOCAL

Introducing climate resilient, low emission production systems

Climate Smart Landscapes



Deforestation-Free Supply chains



Evergreen Farms



Pilot landscapes



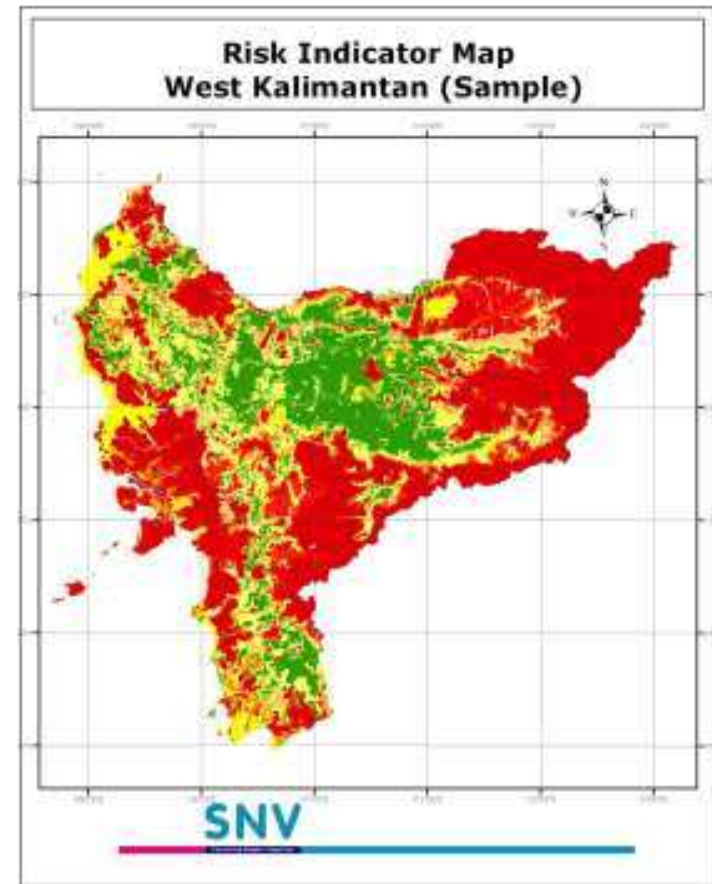
*Some
landscapes*

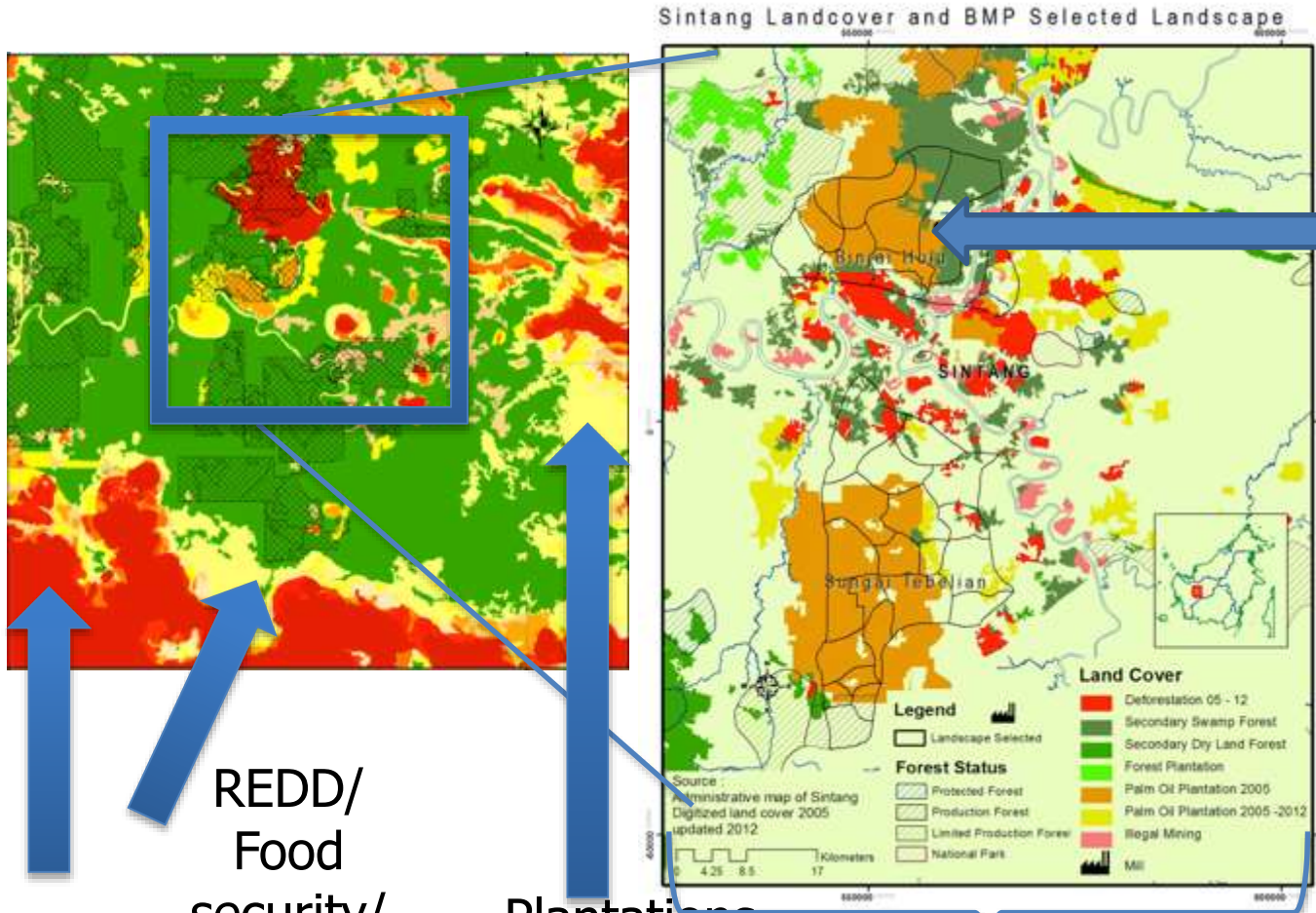
- Palm oil in Indonesia
- Shrimp in Vietnam



1. Understanding the landscape

- Siting tool to determine suitable areas/activities for sustainable agricultural (palm oil) production
- Provides strategic info to investors, gov & companies
- 4 risk classes of unsuitability according to sustainability criteria (e.g. RSPO for PO)
- Intervention depend on risk category
- Other tools (e.g. WRI)





In selected landscape training better agriculture management practices training program on three main topics:

1. GAP
2. SFM
3. Institutional development

PES

REDD/
Food
security/
Certified
agriculture

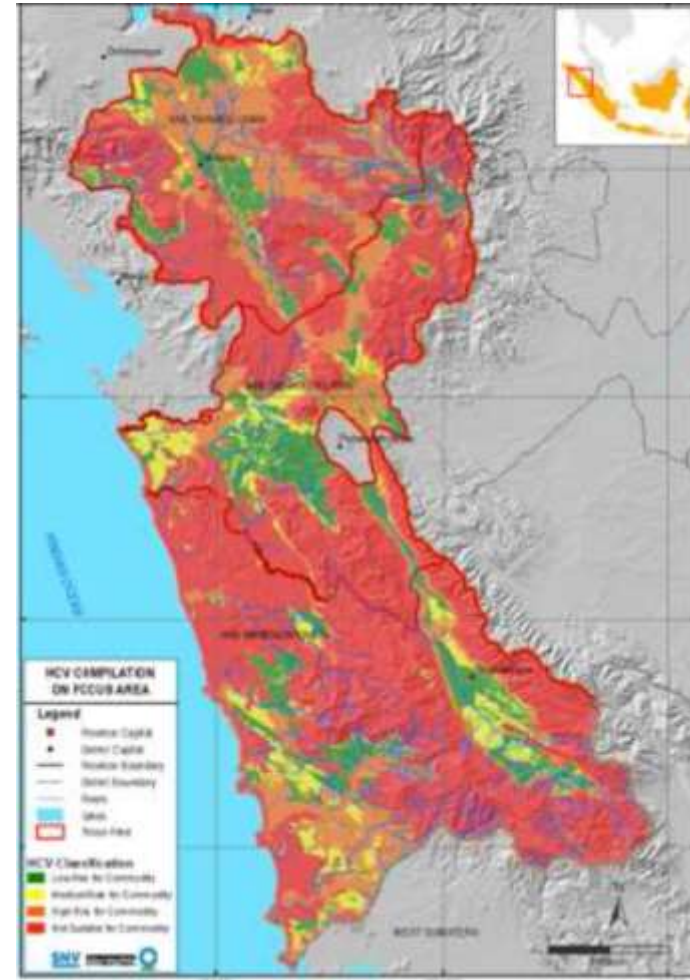
Plantations
wood/timber,
agroforestry

Selected landscape
for Agriculture BMPs



Sustainable agriculture expansion in North Sumatra

- Examined suitability of Palm Oil, Coffee, Cocoa in three districts in North Sumatra
- Overlay climate change – 50 year projections
- Highlighted the limited suitability of cocoa in future
- Remaining areas suitable for palm in high risk zones
- Need to provide options to counter these risks



2. Engaging businesses on deforestation free supply chains: sustainable sourcing

- Report highlighted there may be need to go beyond farm level certification – landscape/frontiers
- Need to engage multiple companies landscape
- Ensure robust traceability systems in place
- Support smallholders in supply chain



Implementing Deforestation-Free Supply Chains – Certification and Beyond

Wendie Smith, Richard McCall, Aron van Goolen
February 2015

SNV SMART
WORKS



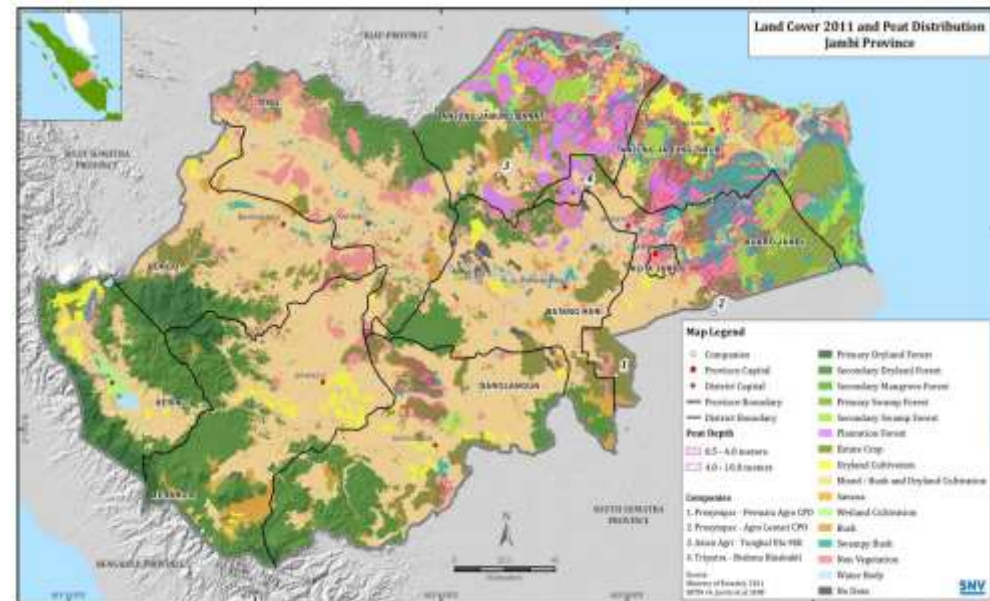
Produced toolkit for companies working with *smallholder farmers* to reduce deforestation in supply chains

- Three key elements:
 - ✓ Linking to local land use planning (siting tools etc)
 - ✓ Building inclusive and sustainable supply chains
 - ✓ Traceability and monitoring tools
- Introduced as a package



Deforestation free palm oil, Berbak Landscape, Jambi

- Multi-stakeholder platforms: create vision across 'landscape'
- Land use assessment and planning; examine risks and trade-offs
- 'Supply sheds'. Work with refineries, mills and companies, smallholders towards deforestation free supply chains



- BMP training to increase yields and sustainable production. Responsible sourcing for smallholders (RSS)
- Supply chain mapping to farmer level
- Forest monitoring



PETA KAPLING PER KELOMPOK TANI KUD K...

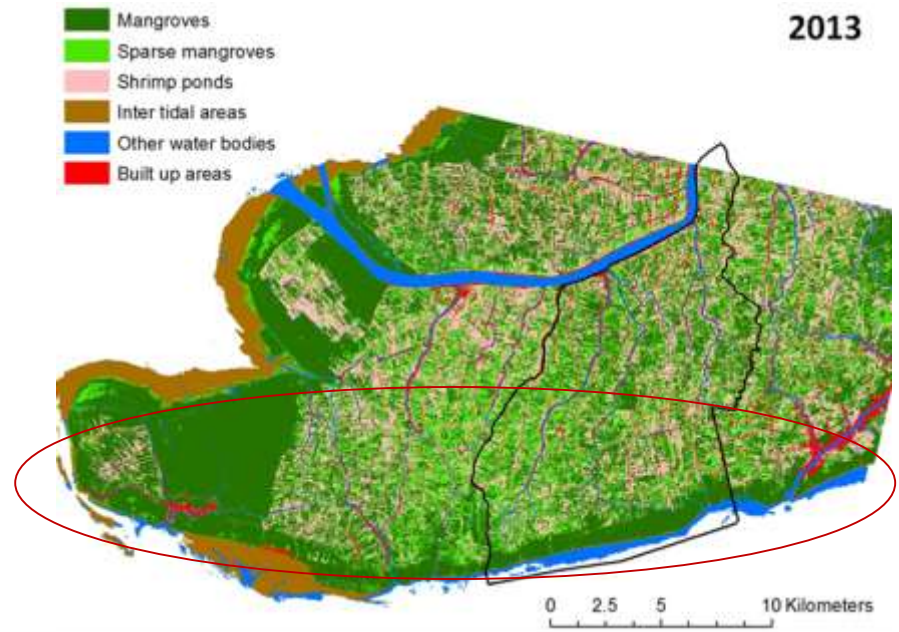


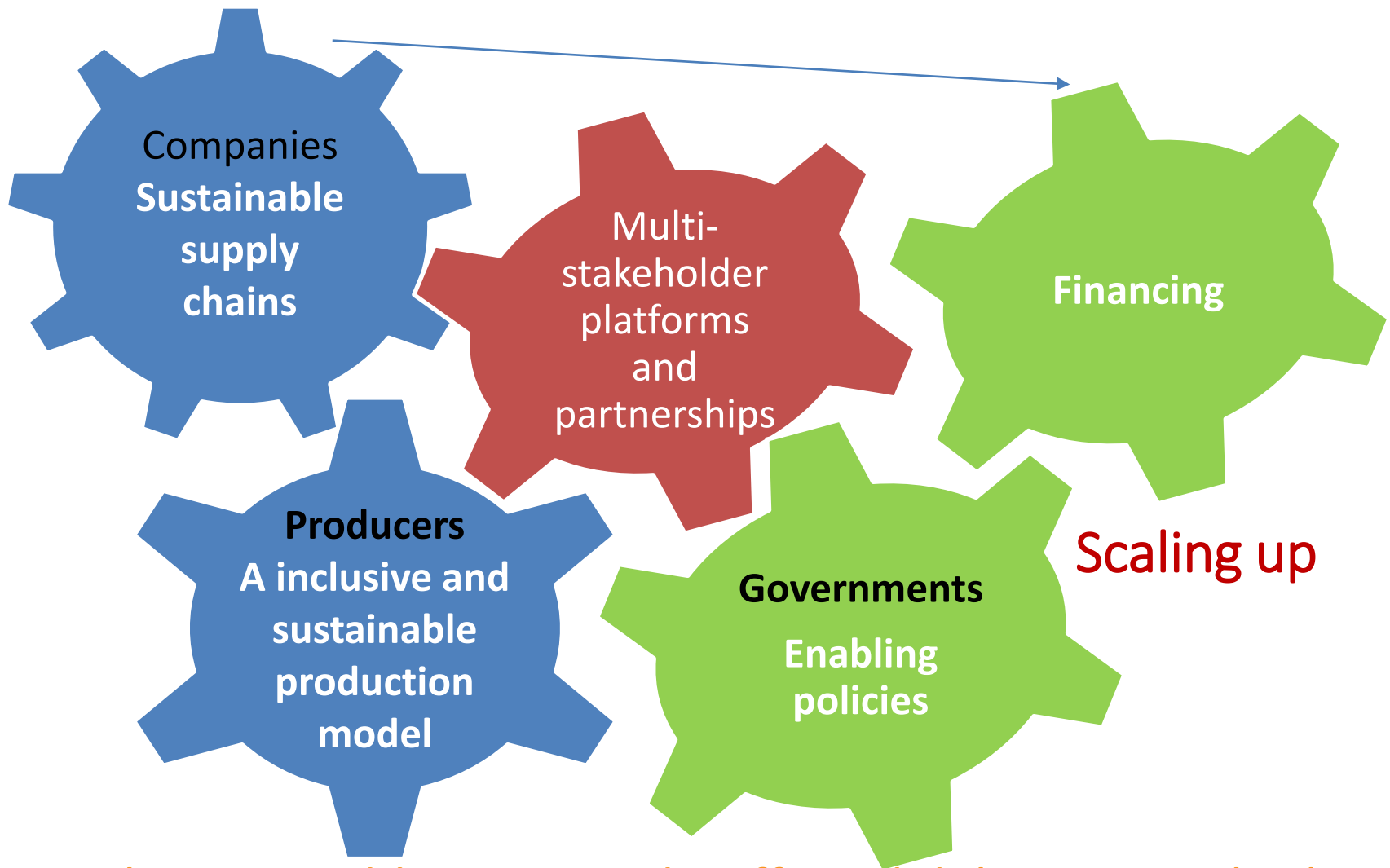
No	Kelompok	KK	HA	No	Kelompok	KK	HA
1	Margo Mulyo I	27	50.51	12	Tri Mulyo V	26	44.20
2	Margo Mulyo II	33	58.85	13	Mawar Abadi I	29	49.61
3	Margo Mulyo III	32	68.80	14	Mawar Abadi II	30	54.70
4	Margo Mulyo IV	25	48.40	15	Mawar Abadi III	27	40.54
5	Margo Mulyo V	22	43.03	16	Mawar Abadi IV	24	32.75
6	Margo Mulyo VI	20	45.35	17	Mawar Abadi V	27	25.93
7	Margo Mulyo VII	27	58.90	18	Sejahtera I	31	43.85
8	Tri Mulyo I	28	53.06	19	Sejahtera II	30	33.27
9	Tri Mulyo II	32	50.00	20	Sejahtera III	30	41.84
10	Tri Mulyo III	24	40.33	21	Sejahtera IV	29	37.85
11	Tri Mulyo IV	21	50.82				



Integrated shrimp-mangrove landscape, Ca Mau, Vietnam

- Introduced integrated mangrove-shrimp model
1,400 farmers, scaling up to 5,000 (14,000ha)
- *Policy support*: new PES policy and policy on sustainable aquaculture 40,000ha?
- *Private sector support*; companies (Minh Phu, etc) agree to sustainable sourcing and payments to farmers





Key elements addressing trade-offs and delivering multiple benefits at scale





Contact SNV

- Richard McNally rmcnally@snvworld.org

