



Demonstration of PNG Forest Monitoring and REDD+ Web Portal

Miss. Zilpah B. Yahamani
National Project Officer
FAO Component – UNREDD National Joint
Programme, Papua New Guinea

**ASIA-PACIFIC
FORESTRY WEEK 2016**
GROWING OUR FUTURE!



PNG REDD+ and Forest Monitoring Web-Portal

by Climate Change Development Authority (CCDA)
& Forest Authority (PNGFA) supported by UN-REDD/FAO

Introduction/Examples of Web-Portal Contents



Link: <http://178.33.8.126/portal/>
User-Name: png
Password: pngportal



Forestry Data: Logging Concession Area from Forest Authority



- Logging concession areas from PNG Forest Authority (PNGFA)
- Improvement of Logging data management are supported by JICA cooperation

(Base Layers): Enhanced Landsat Cloud Free Composite Image



- PNG was used to be one of the difficult countries to monitor the landuse due to cloud
- But recent technology provides cloud free composite image (Annual Greenest Pixel)

Forestry Data: Forest Base Map by PNGFA (supported by JICA)



- Wall-to-Wall Base Map supported by JICA for improvement of forest management
- Detail forest classes based on the PNG forest definition and existing data/system

Forestry Data: NFI Pre-Assessment by PNGFA (supported by FAO)



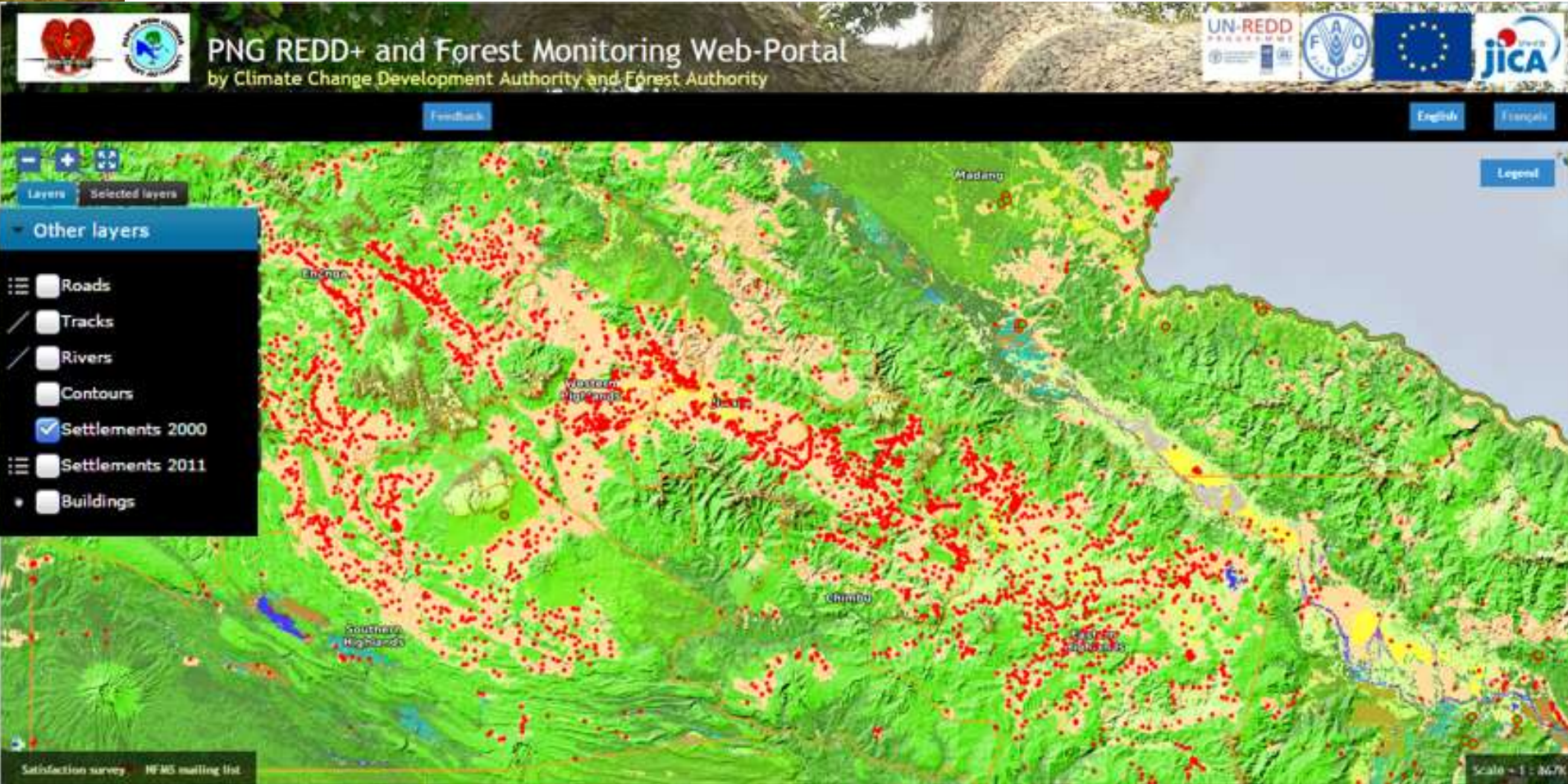
- Every 4km/2km Grid-Sampling Assessment using OpenForis Collect Earth (by FAO)
- Overlay on Top of Forest Basemap and provide further detail such as driver of D.D.
 - Mr. Gewa will talk further detail on Collect Earth Assessment in next presentation

Forestry Data: Forest Type with Topographic Info for Land Feature



- PNG is mountainous country, topographic info is important for planning/management
- Forest type/class with topographic info (hill-shade) provide land feature & suitability

Forestry Data: Agriculture Area with Settlement Distributions



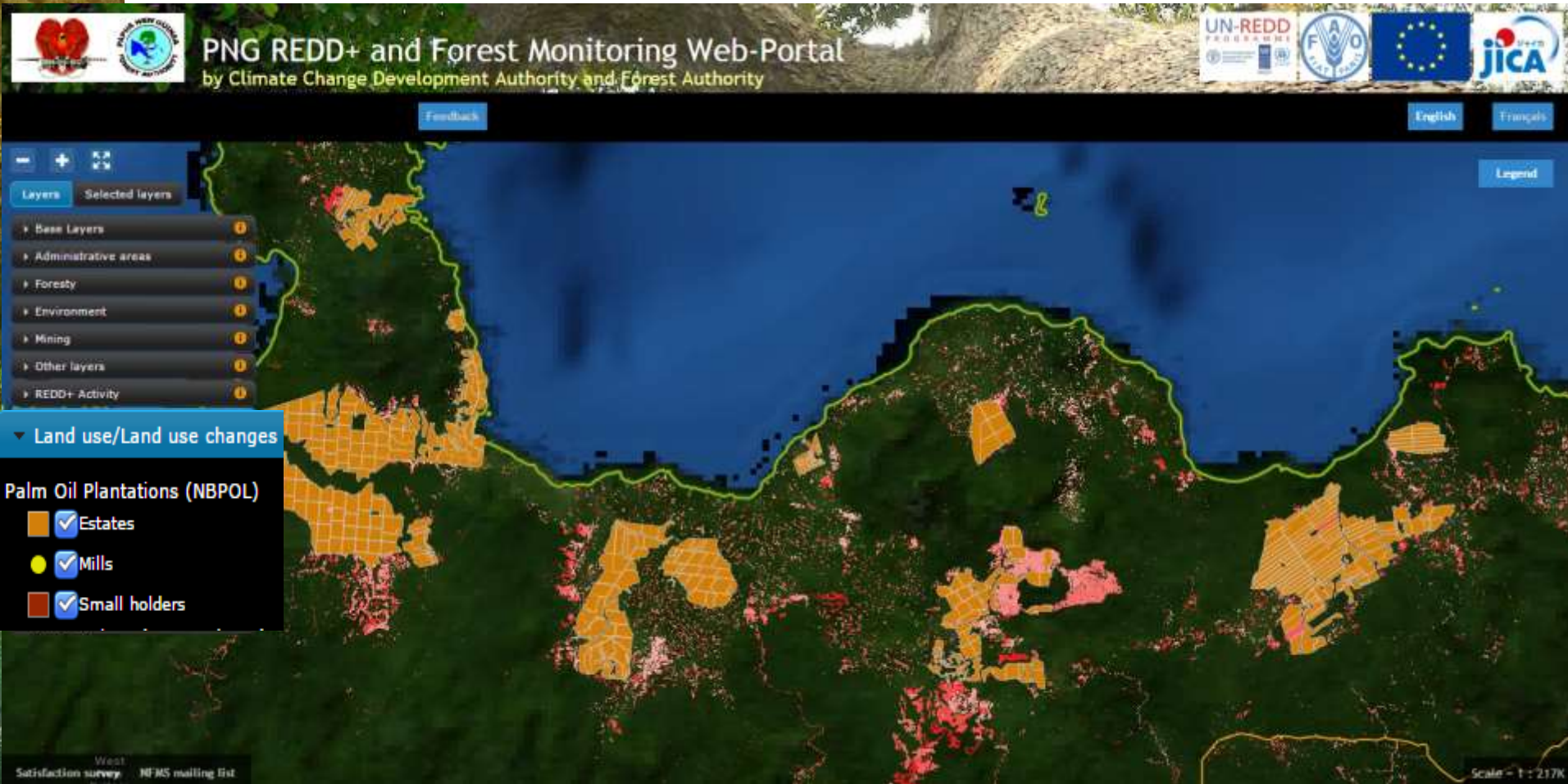
- (Subsistence) agriculture area expansion with settlement distribution (from Census)
- Web-Portal provide these kinds of overview of PNG to people (inc. non-GIS users)

Landuse Data: Global Dataset Tree-cover Loss (Hansen/UMD)



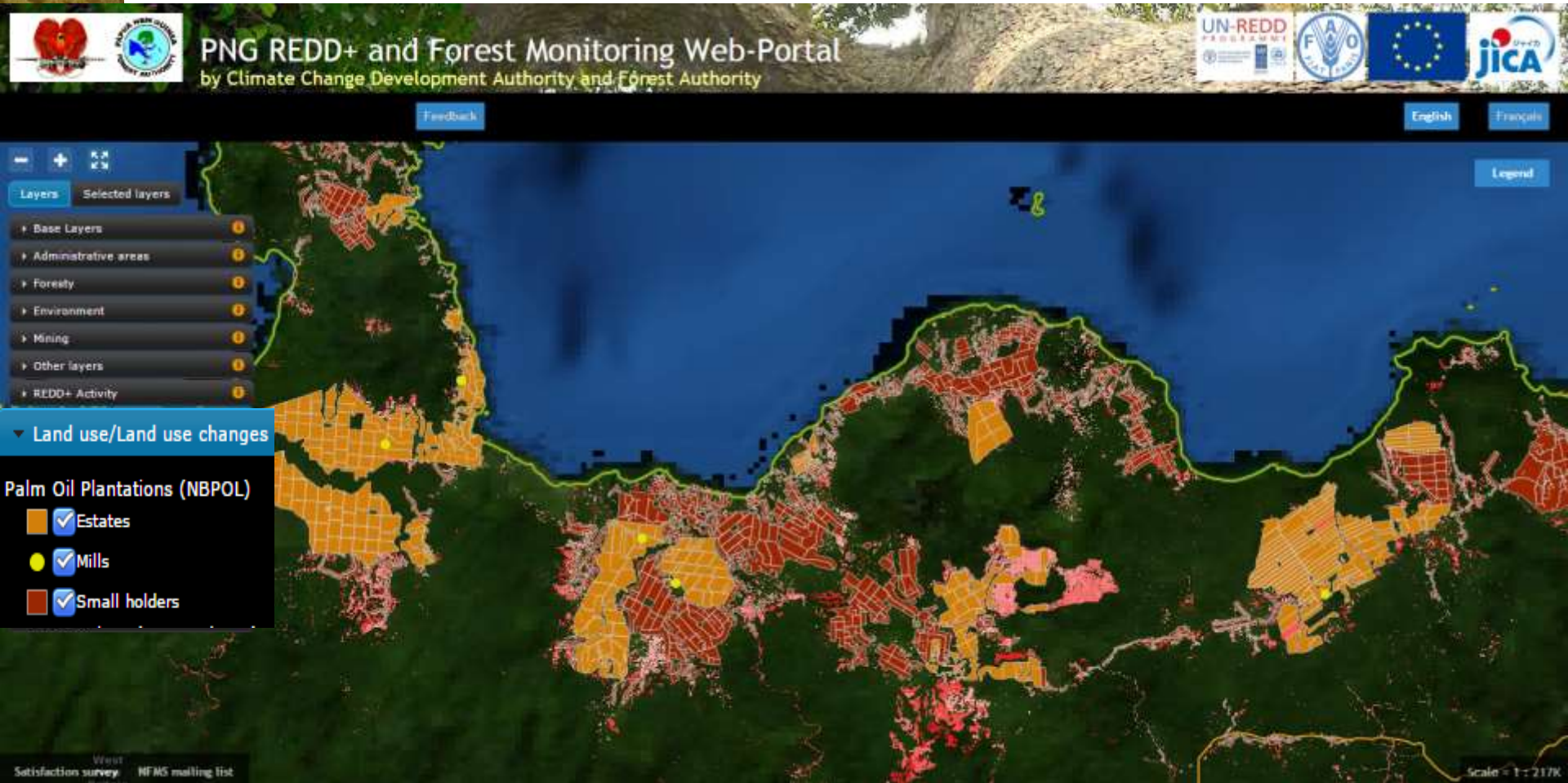
- Global dataset such as tree-cover loss by Hansen/UMD is useful for overviewing area
- But need to be noted that this is tree-cover loss and not all of them are deforestation

Landuse Data: PNG Palm Oil Plantation Area on Hansen Data



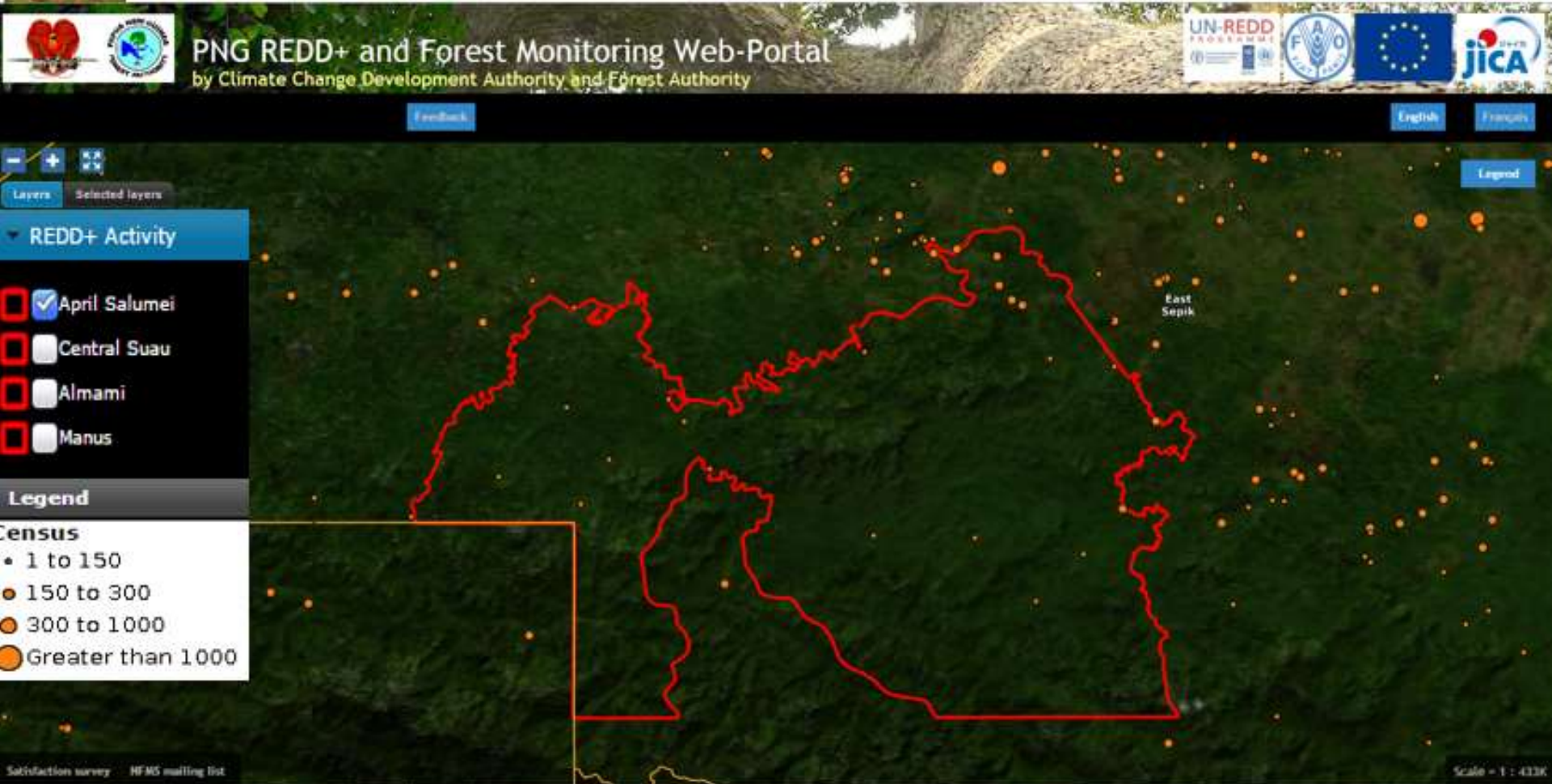
- Overlaying Palm Oil Plantation area from PNG company on Hansen tree-cover loss
- Major tree-cover losses in this area is harvesting of plantation, not deforestation

Landuse Data: PNG Palm Oil (Small Holders) on Hansen Data



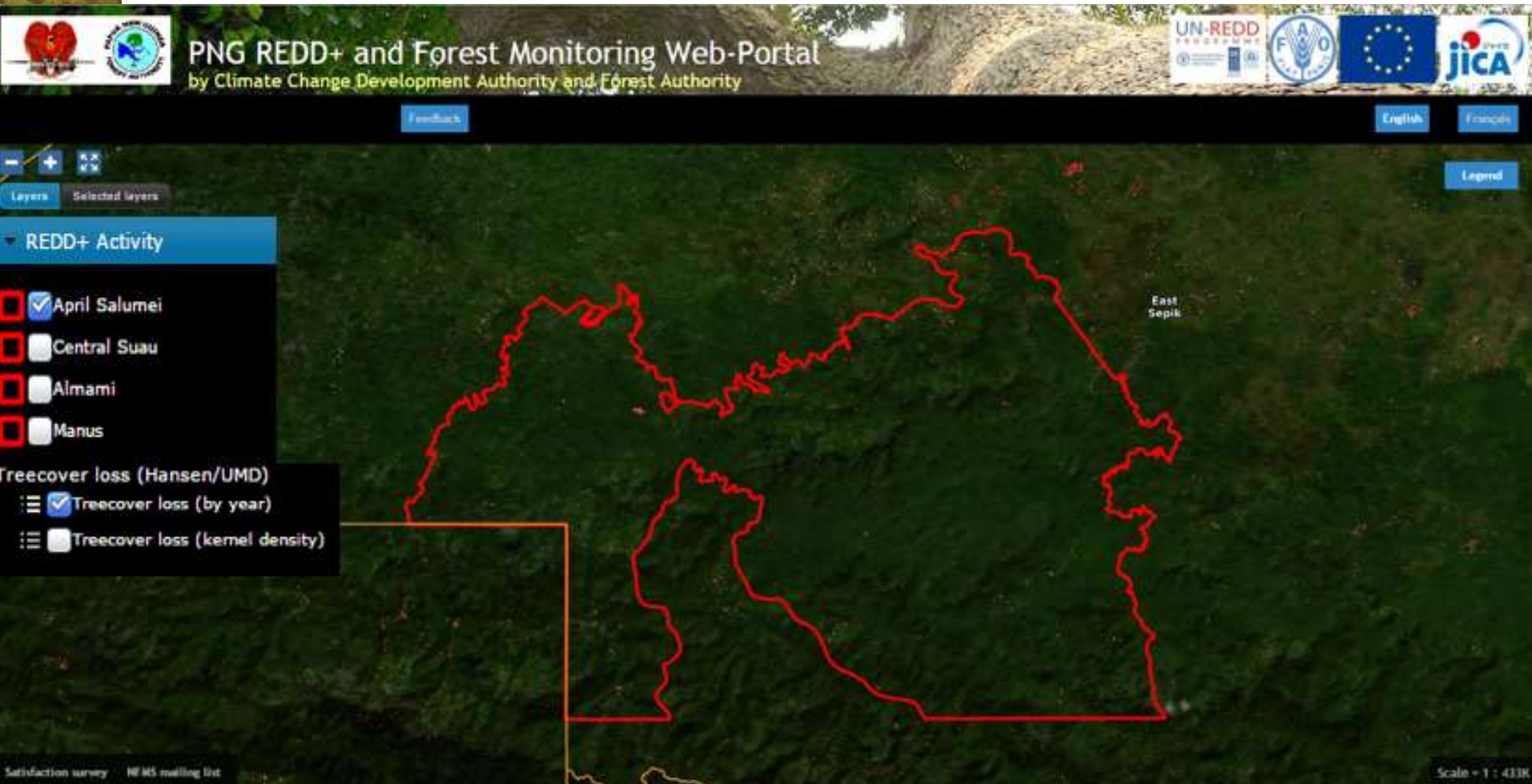
- Even minor/scatter tree-cover loss in this area is actually small holder of palm oil
- Web-Portal is valuable with PNG national data combined with global dataset

REDD+ Activity: Project Boundary and Local Community Info



- REDD+ Pilot Project (April Salumei in East Sepik) with Census 2011 Population Units
- Web-Portal potentially provide the information of local communities and people

REDD+ Activity: Project Area & Tree-cover Loss/Deforestation



- REDD+ Pilot Area (April Salumei in East Sepik) with Hansen Tree-cover loss
- Monitor if the REDD+ activity is permanent and leakage is not happening
- Web-Portal is potential tool for Safeguard Information System (SIS)

TerraPNG: Landuse Assessment/Monitoring by CCDA (with FAO)



- Draft version of national level land-use and land-cover assessment by the PNG Climate Change Development Authority (CCDA) using TerraAmazon, software developed and used by INPE/Brazil
- Land-use class following IPCC basic category with simple forest class: Primary (Intact) and Secondary (Disturbed) Forest will be monitored (*QA/QC is not done yet, for the demo purpose of Web-Portal)

Capacity Building: TerraPNG Analysis and PNG REDD+ Web-Portal



TerraPNG Land Cover and land-use Analysis in Satellite Land Monitoring System (SLMS) Lab



Web-Portal training with FAO HQ experts at Satellite Land Monitoring System (SLMS) Lab

Key Message

- The achievement by **various government and private organizations** in PNG to **share information in one single platform** for the first time in PNG
- The **tool/platform** for anybody/organization to utilize and **promote the achievements** related to **REDD+ in PNG** (all managed by PNG nationals)
- The great showcase to international community on **PNG's commitment on the transparency on REDD+** process through this **monitoring system**

Way-Forward

- In Country Launching of the Web-Portal by PNG Prime Minister is planned on March 9th 2016

Work Plan in 2016

- Web-Portal domain name to be established and officially registered (able to be searched)
- Further improvement of the functions (e.g. showing the attribute info after consultations)
- Further adding the information related to Safeguard for Safeguard Information System

TenkuTru!



Food and Agriculture
Organization of the
United Nations



Asia-Pacific
Forestry
Commission



Department of Environment
and Natural Resources



Center for International
Forestry Research