

# Community-managed Tree Nurturing in Upper Marikina River Basin Protected Landscape through Rainforestation

TERESA L. ARGOTA

Fostering People's Education, Empowerment  
and Enterprise

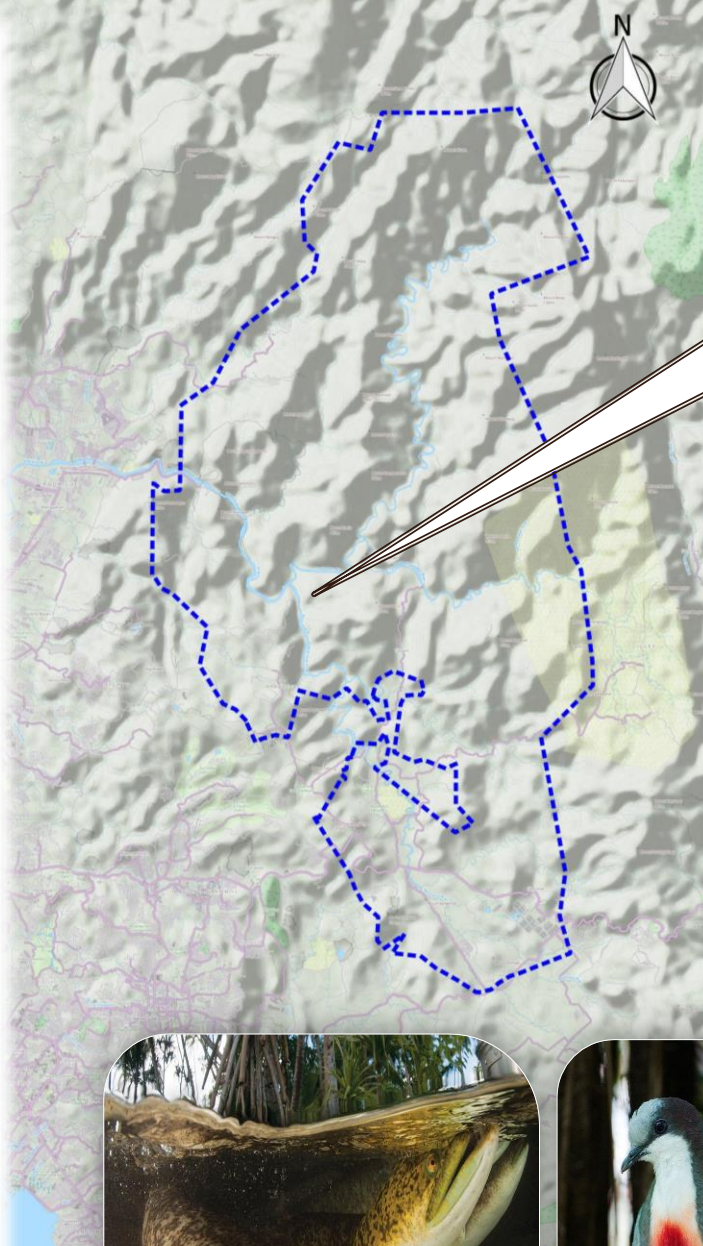
CHERYLON A. HERZANO

Foundation for the Philippine Environment

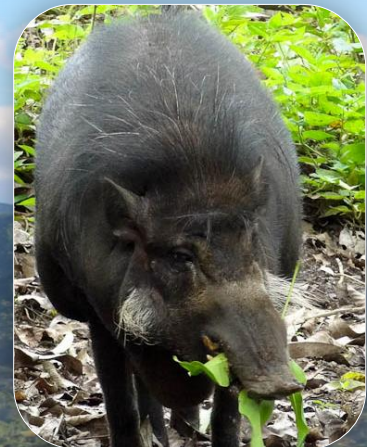




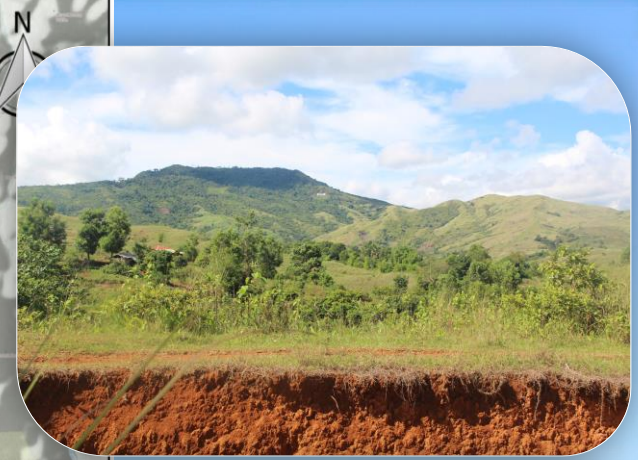
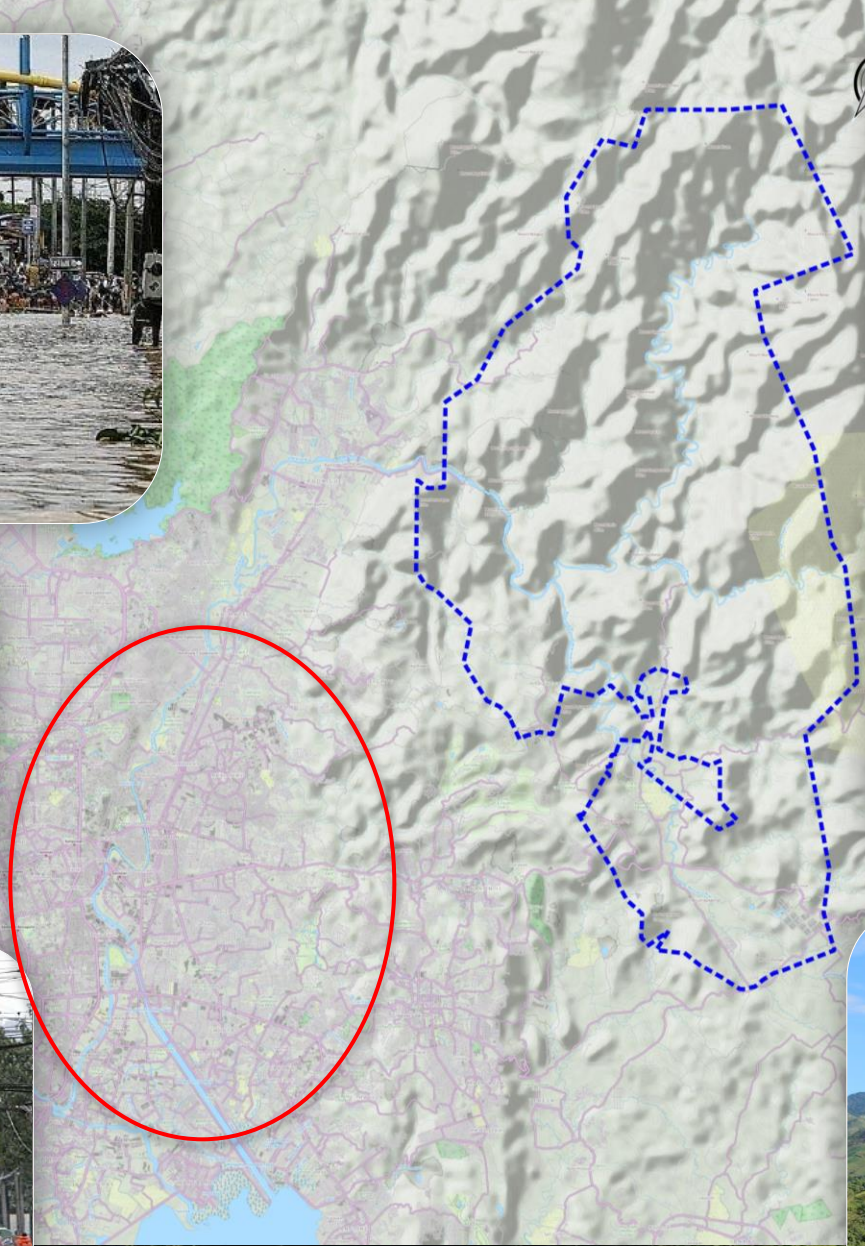
Sierra Madre  
Mountain Range



Brgy. Calawis  
Antipolo City









# Implementing Strategy

## A. Advocacy and Information Drive



1. Advocating Rainfo with the potential support group



# Implementing Strategy

## 2. Advocating Rainfo to the potential community partner including the site identification





# Implementing Strategy

## B. Capacity Building on Rainforestation





# Implementing Strategy

## C. Nursery Establishment

Common native trees raised

Local Name	Scientific Name
Banaba	<i>Lagerstroemia speciose</i>
Dungon	<i>Heritiera sylvatica</i>
Guijo	<i>Shorea guiso</i>
Kamagong	<i>Diospyros blancoi</i>
Kupang	<i>Parkia javanica Lam.</i>
Palosapis	<i>Anisoptera thurifera</i>
Toog	<i>Petersianthus quadrialatus</i>
White Lauan	<i>Shorea contorta</i>
Bagtikan	<i>Parashorea malaanonan</i>
Narra	<i>Pterocarpus indicus</i>
Balobo	<i>Diplodiscus paniculatus</i>

Survival Rate: 92.65





# Implementing Strategy

## D. Rainforestation Development



1 year old after planting



2 years old after planting





## E. Monitoring and Maintenance

### Native trees in Rainforestation

Local Name	Scientific Name	Survival Rate (%)
Banaba	<i>Lagerstroemia speciose</i>	100
Dungon	<i>Heritiera sylvatica</i>	88.46
Guijo	<i>Shorea guiso</i>	100
Kamagong	<i>Diospyros blancoi</i>	81.17
Kupang	<i>Parkia javanica Lam.</i>	80.36
Palosapis	<i>Anisoptera thurifera</i>	100
Toog	<i>Petersianthus quadrialatus</i>	100
White Lauan	<i>Shorea contorta</i>	100
Bagtikan	<i>Parashorea malaanonan</i>	100
Narra	<i>Pterocarpus indicus</i>	97.67
Balobo	<i>Diplodiscus paniculatus</i>	100

Survival Rate: 94.77%

Maximum height: 6.5m





## E. Monitoring and Maintenance

### Fruit trees in Rainforestation

Local Name	Scientific Name	Survival Rate (%)
Lanzones	<i>Lansium domesticum</i>	78.95
Rambotan	<i>Nephelium lappaceum</i>	92.59
Pili	<i>Canarium ovatum</i>	74.51
Guyabano	<i>Annona muricata</i>	73.33
Makopa	<i>Syzygium samarangense</i>	100

**Survival Rate: 83.88%**





# Observation and Gains

## A. Bio-physical Gains

- 746 hectares developed with CSR support group
- 1,700 hectares developed under National Greening Program (NGP)
- Enhance forest biodiversity in the area
- Reduction of wildfire incidence in the area





# Observation and Gains

## B. Perception and behavioral gains

- Change of community perception/ behavior to conservation-based livelihood from destructive source of income (i.e. charcoal making, kaingin, timber poaching etc.)
- Service oriented and local advocates of Rainforestation and the use of native tree species
- Effective trainers/ mentors to other farmers on Rainforestation





# Observation and Gains

## B. Socio-economic gains

- Provide additional higher income
  - ✓ Some community members able to purchase land
  - ✓ Build own houses and able to improve quality living
  - ✓ Purchase household facilities and other amenities
  - ✓ Provide quality education with their children





# Perceived Challenges

- Science-based monitoring and evaluation system that include bio-physical, socio-economic and geopolitical component
- Enterprise development
- Partnership Building with Local Government Unit (LGU)
- Organizational Strengthening





# Sustainability

## Partnership Building and Linkaging

- MOA: Immaculate Heart of Mary Parish
- MOA: Participate in the Government-led reforestation program
- Continue networking/partnership building with the Corporate Social Responsibility (CSR)
- Continue networking with other support group for capacity building (i.e. proposal writing, organizational strengthening etc.)



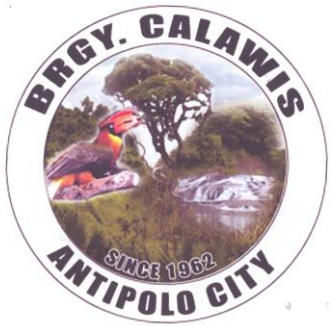


# Conclusion

- Science-based forest restoration
- Community participation
- Use of native tree species
- Outcome-based reforestation/ greening program that have impact:
  - Community empowerment;
  - Quality of living of the community partners;
  - Local forest biodiversity;
  - Watershed resilient to Climate Change



# Support Groups...



# Thank You!

