



# EGYPT ANIMAL HEALTH SITUATION



Presented by  
Dr. Ahmed Hany  
Head of Central Epidemiology Dept, Govs

# THE CURRENT IMPORTANT DISEASES

- ⦿ FMD
- ⦿ LSD
- ⦿ PPR
- ⦿ RVF
- ⦿ AI

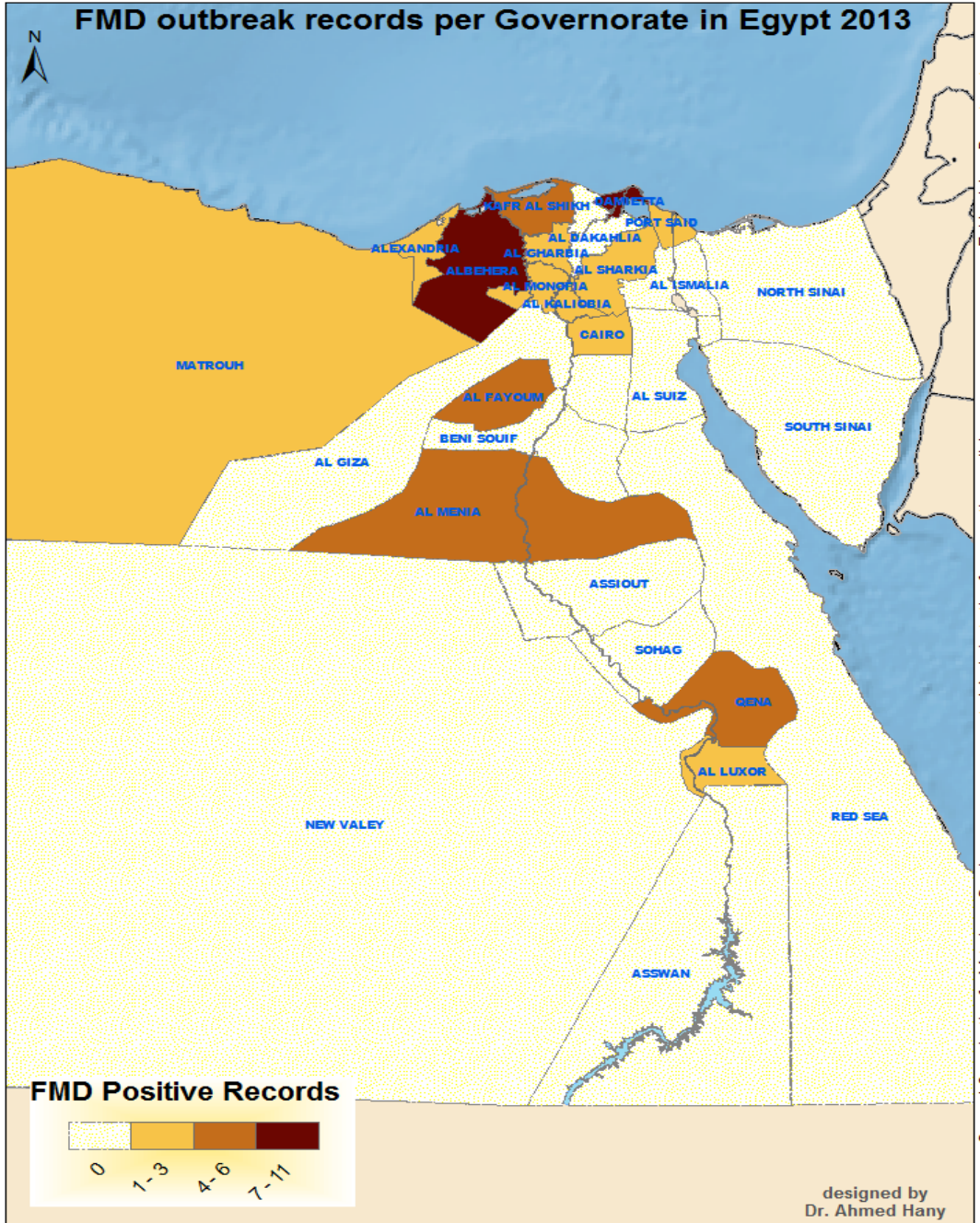
# CURRENT SITUATION OF FMD IN EGYPT

- ⦿ Passive surveillance and reporting.
- ⦿ Active Surveillance strategies.
- ⦿ Control measures.

# PASSIVE SURVEILLANCE AND REPORTING FOR FMD

No. Suspected	Pending results	Negative	FMD +ve SAT 2	FMD +ve O	FMD +ve A	FMD +ve NSP
82	10	27	0	1	30	14

# FMD outbreak records per Governorate in Egypt 2013



Epidemiology Department

central Administration for preventive medicine

General Organization for Veterinary Services

designed by  
Dr. Ahmed Hany

# ACTIVE SURVEILLANCE FOR FMD

## ○ **Objective:-**

- Determination of NSP to determine the prevalence of disease in Egypt (nationwide) in cattle and buffalo.
- Detecting the circulating sero-types if possible active clinical cases were found.
- Studying some risk factors.

## ○ **Methodology:-**

- Collection of serum from large ruminants plus collecting Epithelial samples from active clinical cases from cattle and buffalo in 97 villages representing all Egypt regions. The targeted ages were (6-18 months).

## ○ **Time line:-**

- The surveillance started at December 2012 till March 2013.

# ACTIVE SURVEILLANCE FOR FMD

## ⦿ Results:

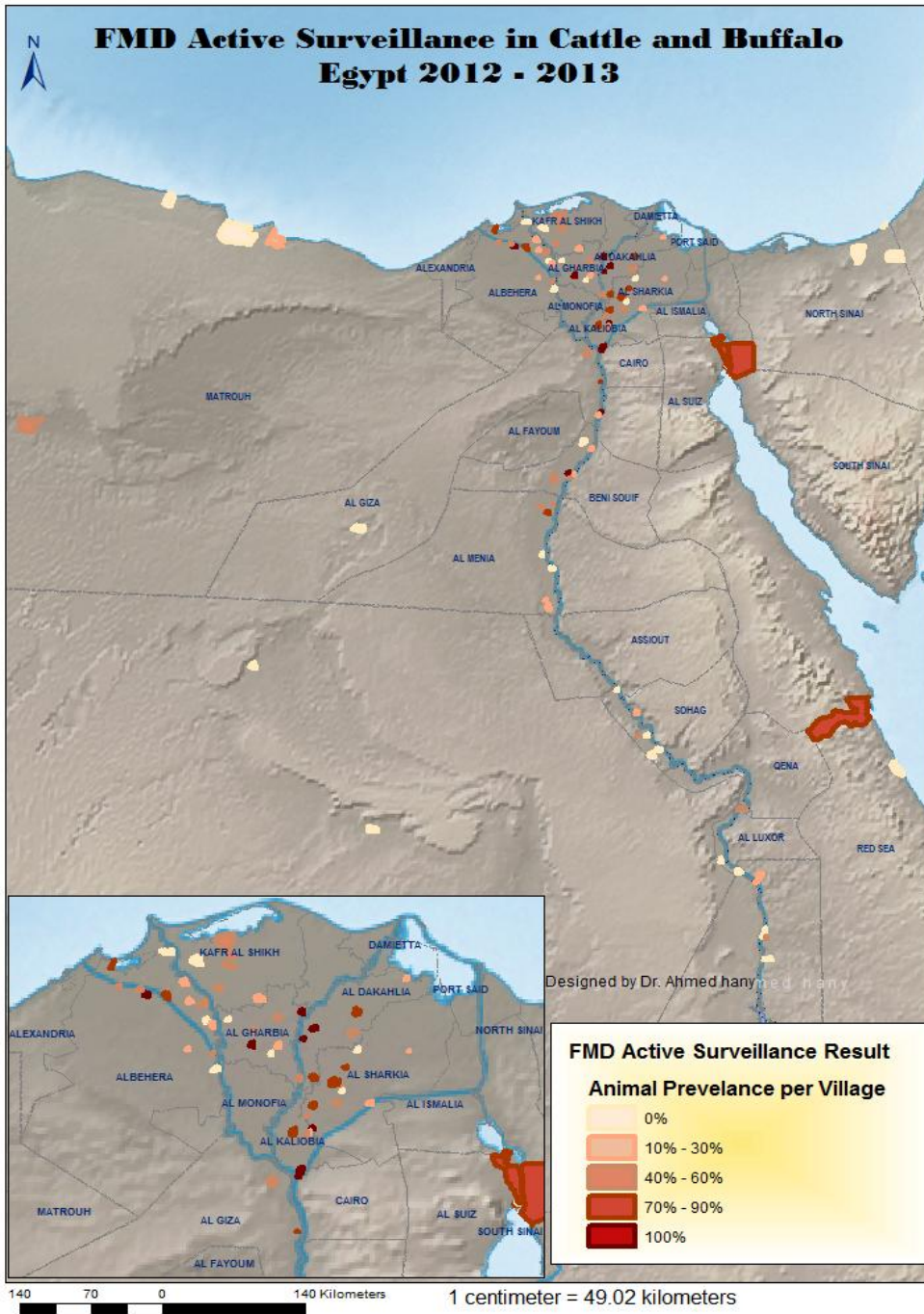
- The FMD virus is highly circulating as the percentage of sero-positive to FMD-NSP antibodies in cow and buffalo distributed by the governorates is 37.5% 95% CI (34.5% - 40.7%) continuous circulation of FMD.
- Delta and central regions were the highest regions of percentage of positive villages (48.7% & 34.6% respectively).
- Referring to the objective to detect the circulated serotypes depending on the clinical cases, only in the sampled animals a three clinical cases were detected (Aswan strain SAT2, Baniswif strain A)

# ACTIVE SURVEILLANCE FOR FMD

## ○ Risk factors:

- Species: - The probability of being positive to NSP of FMD was about 1.5 times higher in buffalo than cattle.
- Age: did not have significance to FMD virus circulation in this study.
- Sex: did not have significance between male and female.





Epidemiology Department

Central A dmin. for Preventive Medicine

GOVS

# CONTROL MEASURES

## ◎ After notification:

- Quarantine measures for 21 days have been taken for 1<sup>st</sup> household or farm notification, with parallel epidemiological investigation in the same time period.
- Sanitary measures.
- Symptomatic treatments.
- Application of ring vaccination with trivalent vaccine for 2 Km radius around the focus.

# CONTROL MEASURES

- National vaccination campaign:
  - Vaccination management is according to our resources.
  - GOVS contracted for 5000000 doses of the locally manufactured trivalent vaccine per year.
  - **priorities :-**
    - Coverage of borders governorates.
    - Coverage of dairy sector.
    - Coverage of young animals from 4 months till one year.
    - Ring vaccination after notification.

# CURRENT SITUATION OF LSD IN EGYPT

- ⦿ Passive surveillance and reporting.
- ⦿ Active Surveillance strategies.
- ⦿ Control measures.

# PASSIVE SURVEILLANCE AND REPORTING FOR LSD

- Out of 45 suspected foci, a Seven confirmed LSD foci have been positively confirmed at 2013 in five Governorates.



# SERO-SURVEILLANCE FOR LSD

- ⦿ Currently a National Sero-surveillance Plan for LSD is ongoing with an objective of evaluation of the AB titer after vaccination.

# CONTROL MEASURES

## ⦿ After notification:

- Quarantine measures for 21 days have been taken for 1<sup>st</sup> household or farm notification, with parallel epidemiological investigation in the same time period.
- Sanitary measures, with a national pesticide spraying campaign is applied.
- Symptomatic treatments.
- Application of ring vaccination with Sheep Pox Vaccine for 2 Km radius around the focus.



# CONTROL MEASURES

## ⦿ Vaccination:

- Annual vaccination mainly is depending on Locally produced Sheep Pox Vaccine.
- Depending on Sero-surveillance strategy for the evaluation of the AB titer, the vaccination plan may be modified.

# CURRENT SITUATION OF PPR IN EGYPT

- ⦿ Passive surveillance and reporting.
- ⦿ Active Surveillance strategies.
- ⦿ Control measures.

# PASSIVE SURVEILLANCE AND REPORTING FOR PPR

- Out of 25 suspected foci, a 22 confirmed PPR foci have been positively confirmed at 2013 in 11 Governorates.



# ACTIVE SURVEILLANCE FOR PPR

- ⦿ A currently national plan for PPR active surveillance has just finished nationwide, with an objective of estimation of the prevalence of the disease.
- ⦿ The epidemiological report will be conducted after finalization of receiving samples result, data manipulation and validation.

# CONTROL MEASURES

## ⦿ After notification:

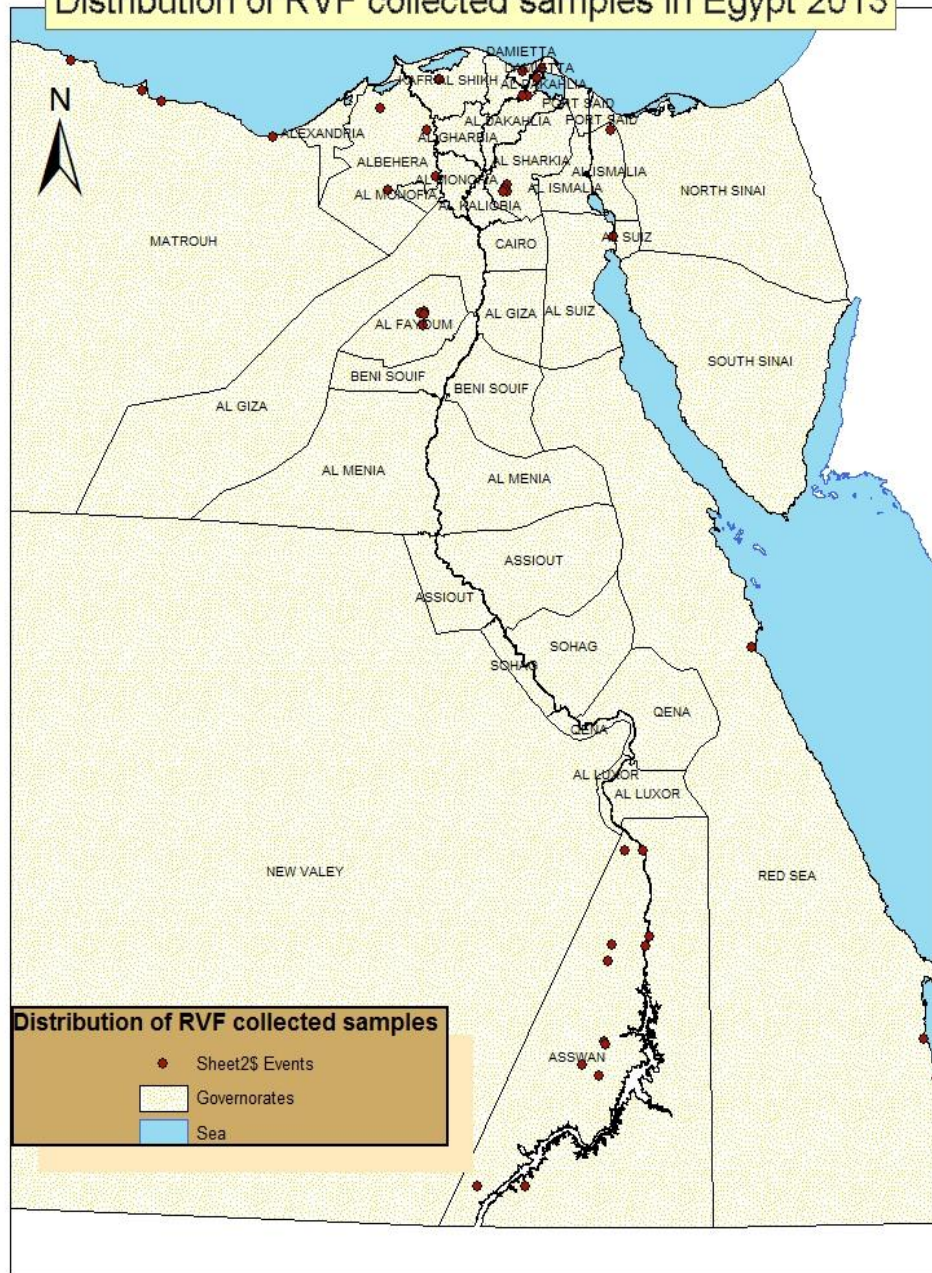
- Quarantine measures for 21 days have been taken for 1<sup>st</sup> household or farm notification, with parallel epidemiological investigation in the same time period.
- Sanitary measures.
- Symptomatic treatments.
- Application of ring vaccination with PPR locally produced vaccine for 2 Km radius around the focus.

# CURRENT SITUATION OF RVF IN EGYPT

- ◉ Since 1995 Egypt had not been recoded for RVF in animals.
- ◉ An increasing awareness for rapid notification and reporting.
- ◉ An Active Surveillance in animals, Entomological surveillance as well had been implemented in 2012 and 2013 in some border governorates and governorates under risk (had history for RVF records in man or animals) with negative results.
- ◉ It is planned to implement annual surveillance for the disease till declaring free.
- ◉ Control measures: periodical vaccination against the disease.



# Distribution of RVF collected samples in Egypt 2013



0 80,000 160,000 320,000 Meters

1 centimeter = 46,729 meters



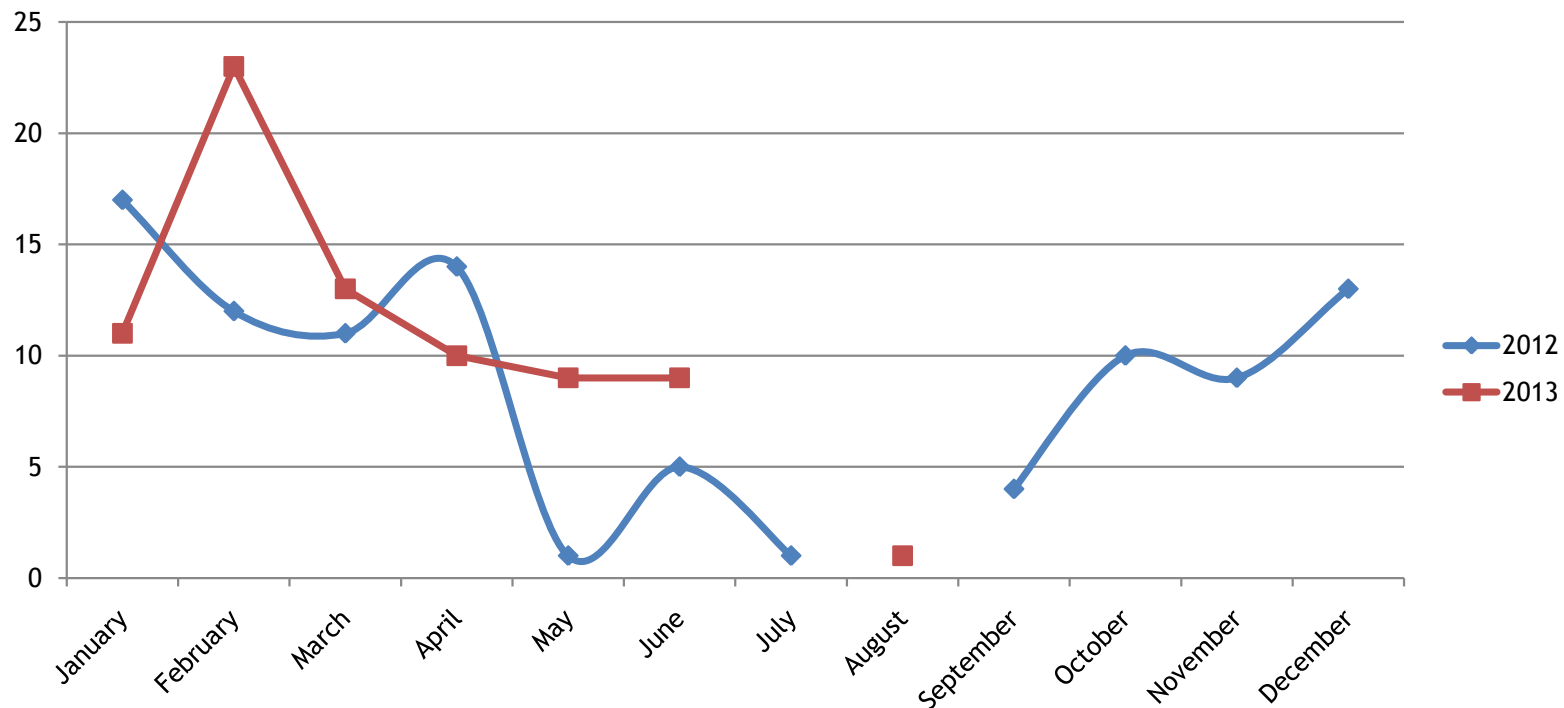
# CURRENT SITUATION OF AI IN EGYPT

- ⦿ Passive surveillance and reporting.
- ⦿ Control measures.

# PASSIVE SURVEILLANCE AND REPORTING FOR HPAI H5N1

- Egypt Recorded 92 foci during 2013

HPAI H5N1 2012 / 2013





# CONTROL MEASURES

## ⦿ After notification:

- Rapid response team to take the action:
  - Culling team for the suspected foci.
  - Epidemiological team for Epidemiological investigation.
  - Communication team for extension.
- Quarantine measures for 21 days have been taken for the notifying village, with parallel epidemiological investigation in the same time period.
- Application of vaccination in household sector.

**Thank you for your attention**