

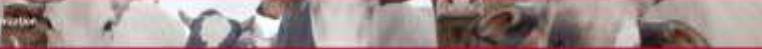


Animal disease notification systems (ADNS, WAHIS)

Session 1: Contingency planning, risk management and communication

Tsviatko Alexandrov

DVM, PhD, FAO International consultant



General objectives in Animal Health

2

Transparency:

- ✓ Ensure transparency in the global animal disease situation
- ✓ Dissemination of disease information via the WAHID Interface, ADNS

Adequate measures:

- ✓ Outbreaks control
- ✓ Vaccination

Sanitary safety:

- ✓ Safeguard world trade by health standards for international trade in animals and animal products

Legal obligation for disease notification in animals ³

for all OIE Member Countries through WAHIS → Mission - to ensure transparency of worldwide animal disease situation including zoonosis

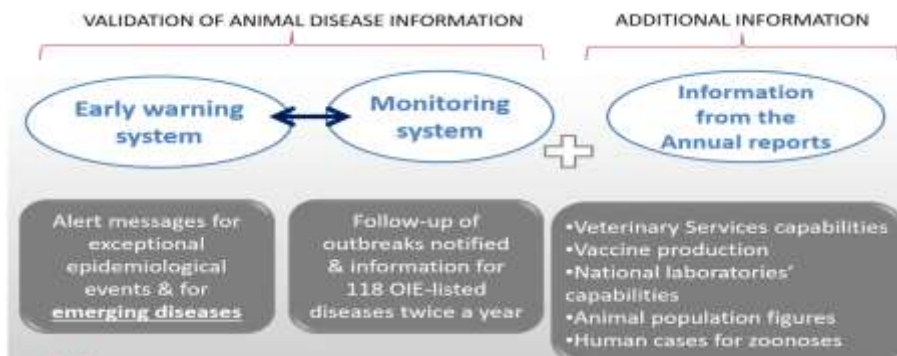
URL address: www.oie.int/wahis



OIE List of notifiable diseases for terrestrial and aquatic animals, as per :

- Terrestrial Animal Health Code
- Aquatic Animal Health Code

In 2016 : 90 disease in terrestrial animals and 28 diseases in aquatic



World Health Organization
of the United Nations

5

The screenshot shows the WHO website interface with several key sections:

- Report**: Includes "Immediately notifications and follow-up" and "Weekly Disease Information".
- Country**: "Detailed country (ies) disease occurrence" and "List of countries by sanitary situation".
- Change**: "Global activity" section.
- Alerts**: "Disease outbreak maps" and "Disease distribution maps".
- General**: "General Disease Information".

Lumpy skin disease prevention, control, and awareness workshop Budapest, Hungary, 7-9 March 2017

World Health Organization
of the United Nations

LSD outbreaks 2014 – Feb 2017

6

The screenshot displays the "WAHIS Interface" for "Disease outbreak maps: Lumpy skin disease". It features two maps:

- A large map of Europe and the Mediterranean region with numerous blue and red circular markers indicating outbreak locations.
- A smaller world map on the right showing the global distribution of outbreaks.

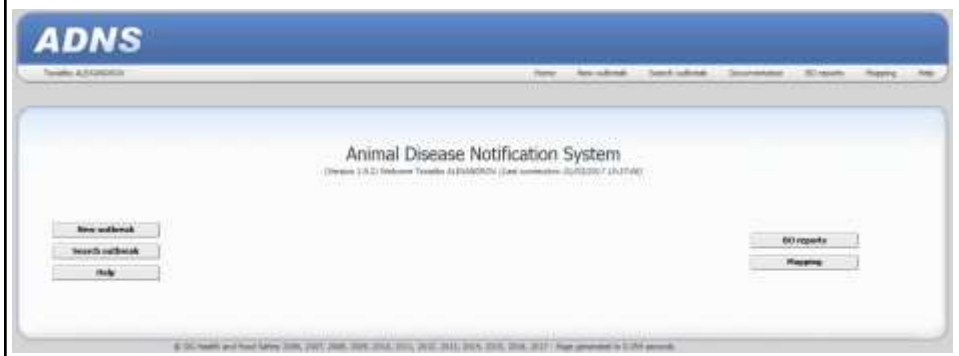
Legend for the maps:

- Blue circle: Reported outbreak cluster
- Red circle: Reported disease case
- Green circle: Suspected outbreak cluster
- Yellow circle: Suspected disease case

Lumpy skin disease prevention, control, and awareness workshop Budapest, Hungary, 7-9 March 2017

Food and Agriculture Organization of the United Nations

Animal Disease Notification System

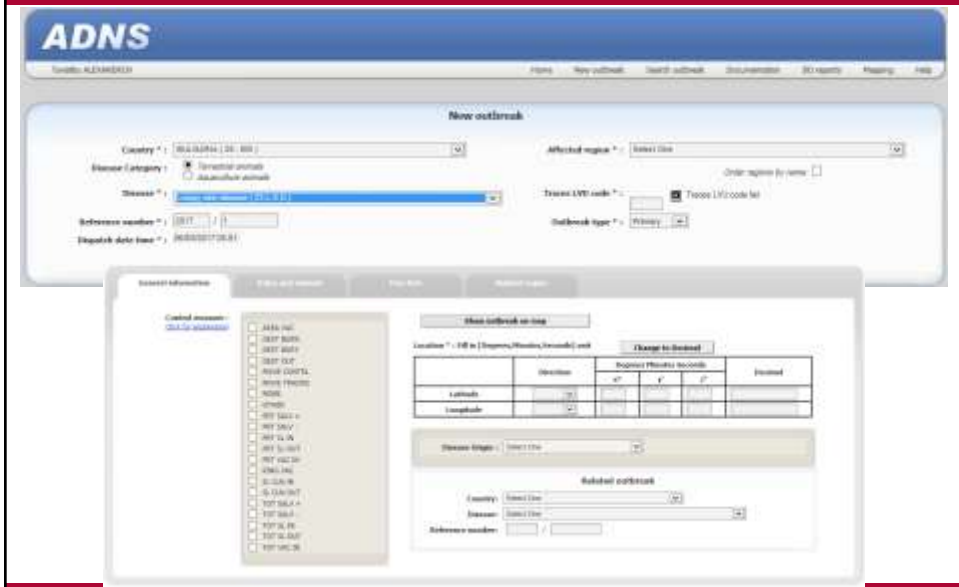


Users: EU Member States, Serbia, Macedonia, Kosovo, Turkey.....

<https://webgate.ec.europa.eu/ADNS/sec/?event=sec.login>

Food and Agriculture Organization of the United Nations

New outbreak



General information **Dates and animals** Fine text Related topics

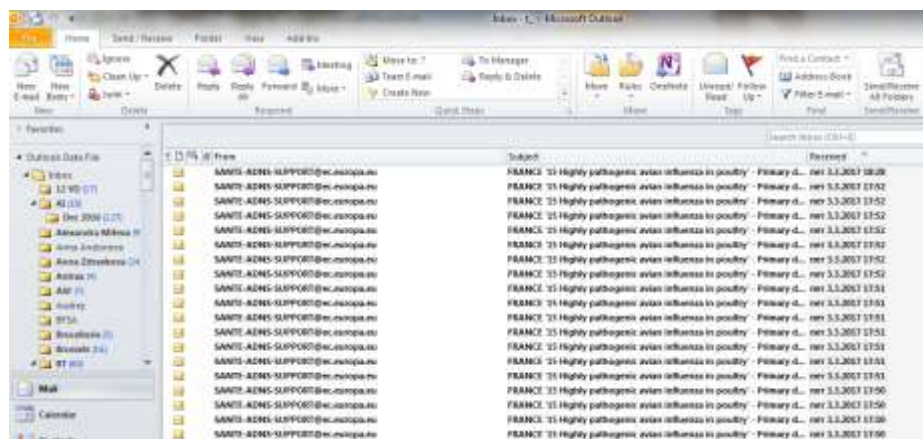
Disease's Evolution

Evolution type	Code				
Suspicion	130	<input type="text"/>	<input type="text"/>	<input type="text"/>	(dd/mm/yyyy)
Confirmation *	140	<input type="text"/>	<input type="text"/>	<input type="text"/>	(dd/mm/yyyy)
First infection	150	<input type="text"/>	<input type="text"/>	<input type="text"/>	(dd/mm/yyyy)
Killed	160	<input type="text"/>	<input type="text"/>	<input type="text"/>	(dd/mm/yyyy)
Destruction	170	<input type="text"/>	<input type="text"/>	<input type="text"/>	(dd/mm/yyyy)

Number of animals

Status	Code	Count	Initial
Susceptible	13 (O)	<input type="text"/>	0
Affected	14 (X)	<input type="text"/>	0
Dead	15 (O)	<input type="text"/>	0
Killed	16 (O)	<input type="text"/>	0
Destroyed	17 (O)	<input type="text"/>	0

Outbreak notification directly by e-mail



From: SANTE-ADNS-SUPPORT@ec.europa.eu [mailto:SANTE-ADNS-SUPPORT@ec.europa.eu]
Sent: Friday, March 3, 2017 1:58 PM
To: Georgi Chobanov <G_Chobanov@bfsa.bg>
Subject: GREECE '23 Lumpy skin disease' - Primary disease notification



11

Country of origin | GREECE
Disease | Lumpy skin disease
Serial number of outbreak (year/number) | 2017/1
Type of outbreak (primary '1' or secondary '2') | 1
Region affected | 00022 KERKIRA
Traces LVU code | 02400 - Kerkyra
Latitude | 39.58
Longitude | 19.88

Origin of disease : Unknown - investigation continuing

Control measures :
- 30 DEST BURY
- 50 MOVE CONTRL
- 51 MOVE TRACNG
- 10 TOT SL IN

Date
Date of suspicion of disease on holding (day/month/year) : 27/02/2017
Date of confirmation of disease on holding (day/month/year) : 02/03/2017

Number of animals
Number of susceptible animals on holding
- cattle : 28
Number of animals affected on holding
- cattle : 12
Number of animals that have died of the disease on holding
- cattle : 3
Number of animals killed on holding
- cattle : 25
Number of carcasses destroyed or rendered
- cattle : 28

Date of dispatch (day/month/year) : 03/03/2017
Time of dispatch (24-hour clock) : 12:55

