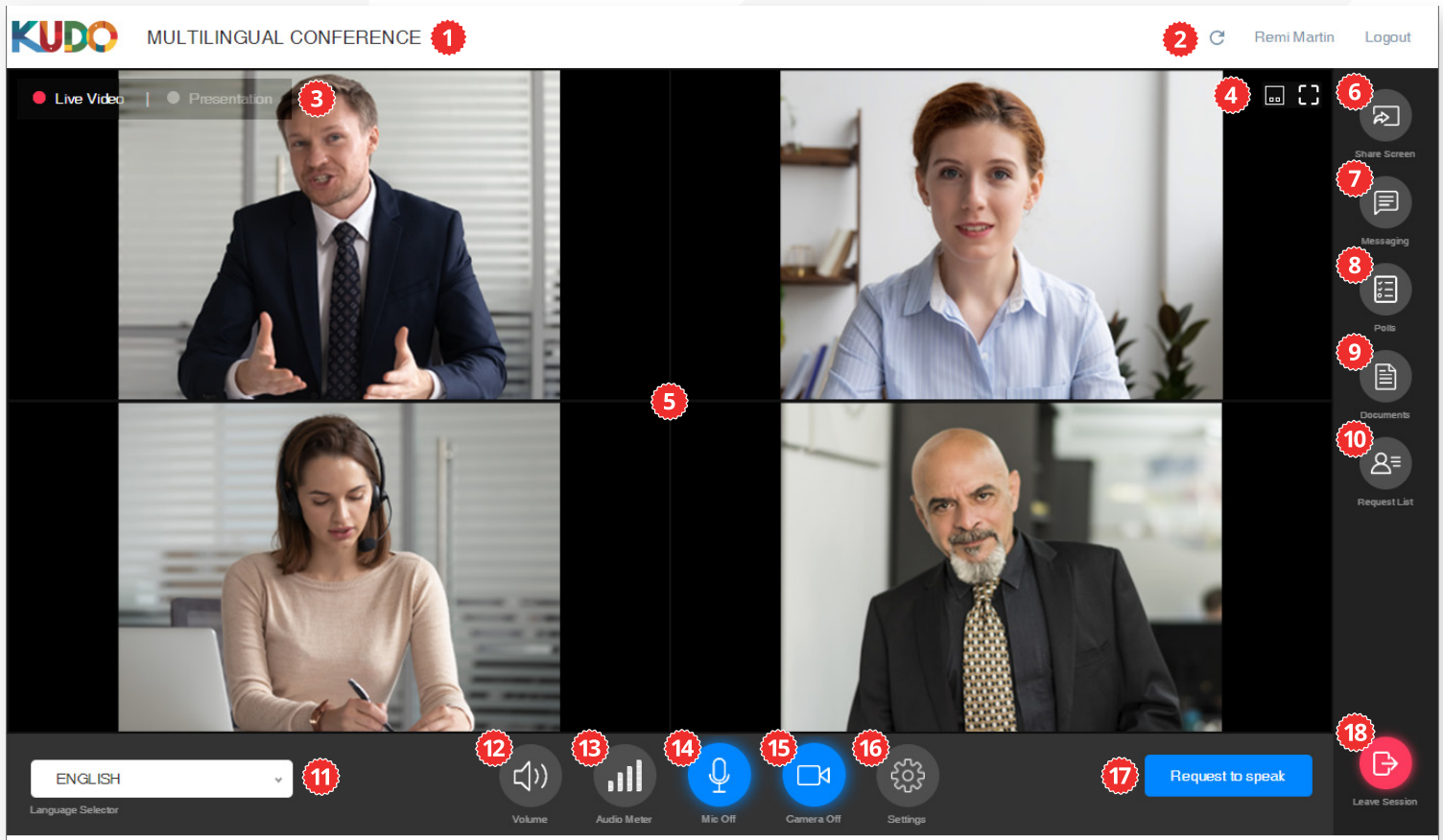




# User Interfaces

.....

Meet the KUDO Participant Interface. It includes all the features and controls you need for full interaction between speakers and participants.



## 1 Meeting Name

Indicates the name of the session.

## 2 Refresh / Logout

Click the buttons to refresh the session or exit it and log out from your KUDO account.

## 3 Video Input Selection Tabs

Alternate between Live Video or Presentation Mode to be displayed in the video window.

## 4 View Layout Toggles

Switch between gallery or single view (left btn). Expand the video window to full screen (right btn).

## 5 Video Window

Embedded video or presentation window.

## 6 Share Screen

Share a specific window or your entire screen.

## 7 Messaging Tab

Select the chat channels to communicate with interpreters, operators and participants.

## 8 Polls Tab

Start/Stop polls, publish and view results.

## 9 Documents Tab

Access to upload and view documents shared on the session.

## 10 Request List Tab

Access the speakers who have requested the Floor, accept or decline their request.

## 11 Language Selector

Select an interpreted language to follow from the list.

## 12 Incoming Volume Mute

Mute all incoming sound. When active, the button will turn red and crossed.

## 13 Incoming Audio Meter

Visual meter of the level of outgoing sound.

## 14 Mic On/Off

Activate or deactivate your microphone to start speaking.

## 15 Camera On/Off

Activate or deactivate your camera to share your video.

## 16 Interface and Media Settings

Select the language for the interface, and the mic/speaker/camera to use on the meeting.

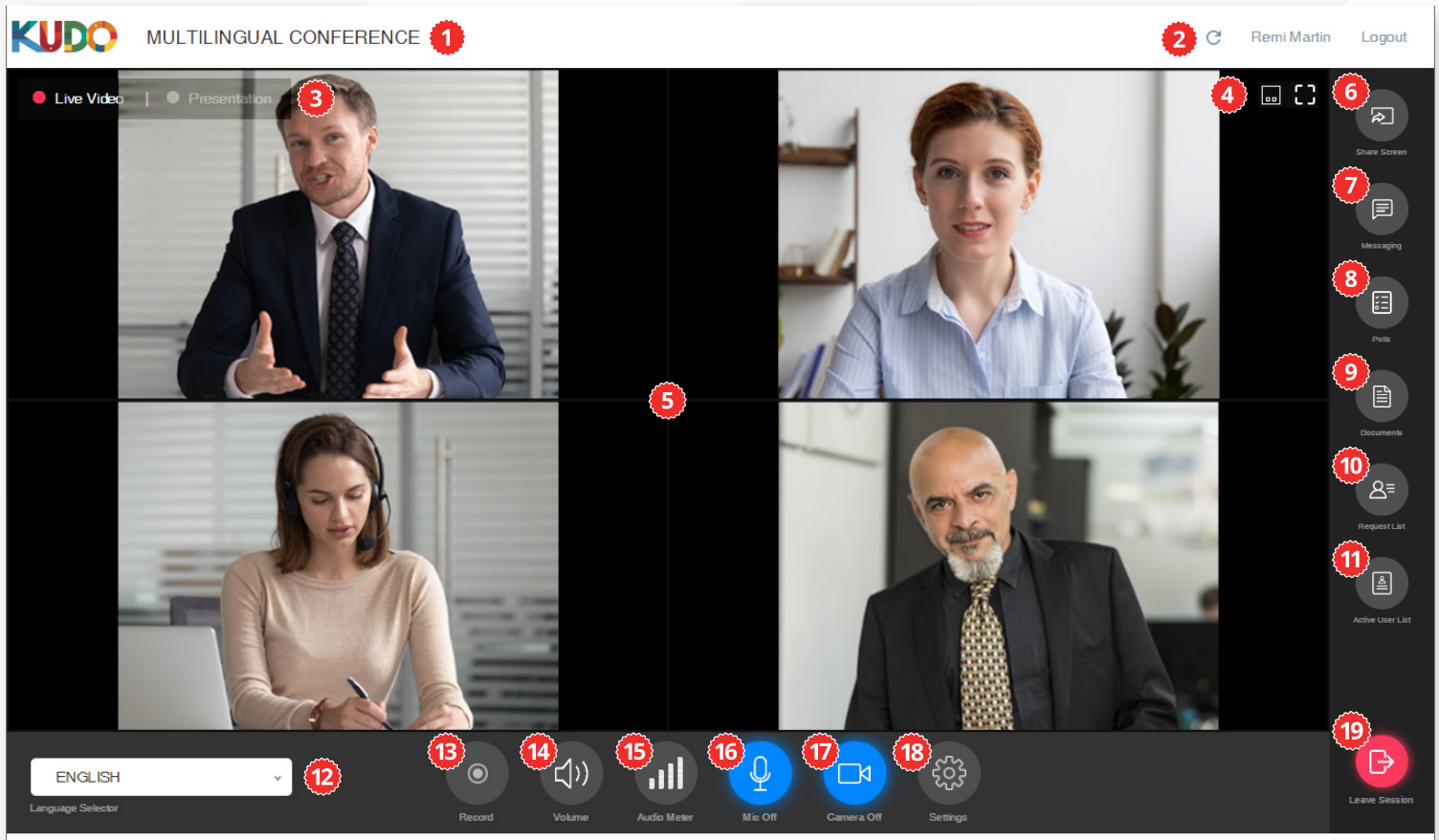
## 17 Request to speak / Release mic

Send a request to the Operator / VIP to be allowed in the meeting floor to participate in the meeting.

## 18 Leave Session

Leave the session without logging out from your KUDO account.

The KUDO VIP Participant Interface includes all the features and controls for standard participants, plus some operator functions that enable the user to act as a moderator in a meeting.



## 1 Meeting Name

Indicates the name of the session being interpreted.

## 2 Refresh / Logout

Click to refresh the session or exit it and log out from your KUDO account.

## 3 Video Input Selection Tabs

Alternate Live Video or Presentation to be displayed in the video window.

## 4 View Layout Toggles

Switch between gallery or single view (left btn). Expand the video window to full screen (right btn).

## 5 Video Window

Embedded video or presentation window.

## 6 Share Screen

Share a specific window or your entire screen.

## 7 Messaging Tab

Use the chat to communicate with interpreters, operators and participants.

## 8 Polls Tab

Start/Stop polls, publish and view results.

## 9 Documents Tab

Access to upload and view documents shared on the session.

## 10 Request List Tab

See the speakers who have requested to speak, accept or decline their request.

## 11 Active User List Tab

Overview of current connected users, turn on/off their mic and camera.

## 12 Language Selector

Select an interpreted language to follow from the list.

## 13 Record Button

Click the button to start/stop recording an ongoing session.

## 14 Incoming Volume Mute

Mute all incoming sound. When active, the button will turn red and crossed.

## 15 Incoming Audio Meter

Visual meter of the level of outgoing sound.

## 16 Mic On/Off

Activate or deactivate your microphone to start speaking.

## 17 Camera On/Off

Activate or deactivate your camera to share your video.

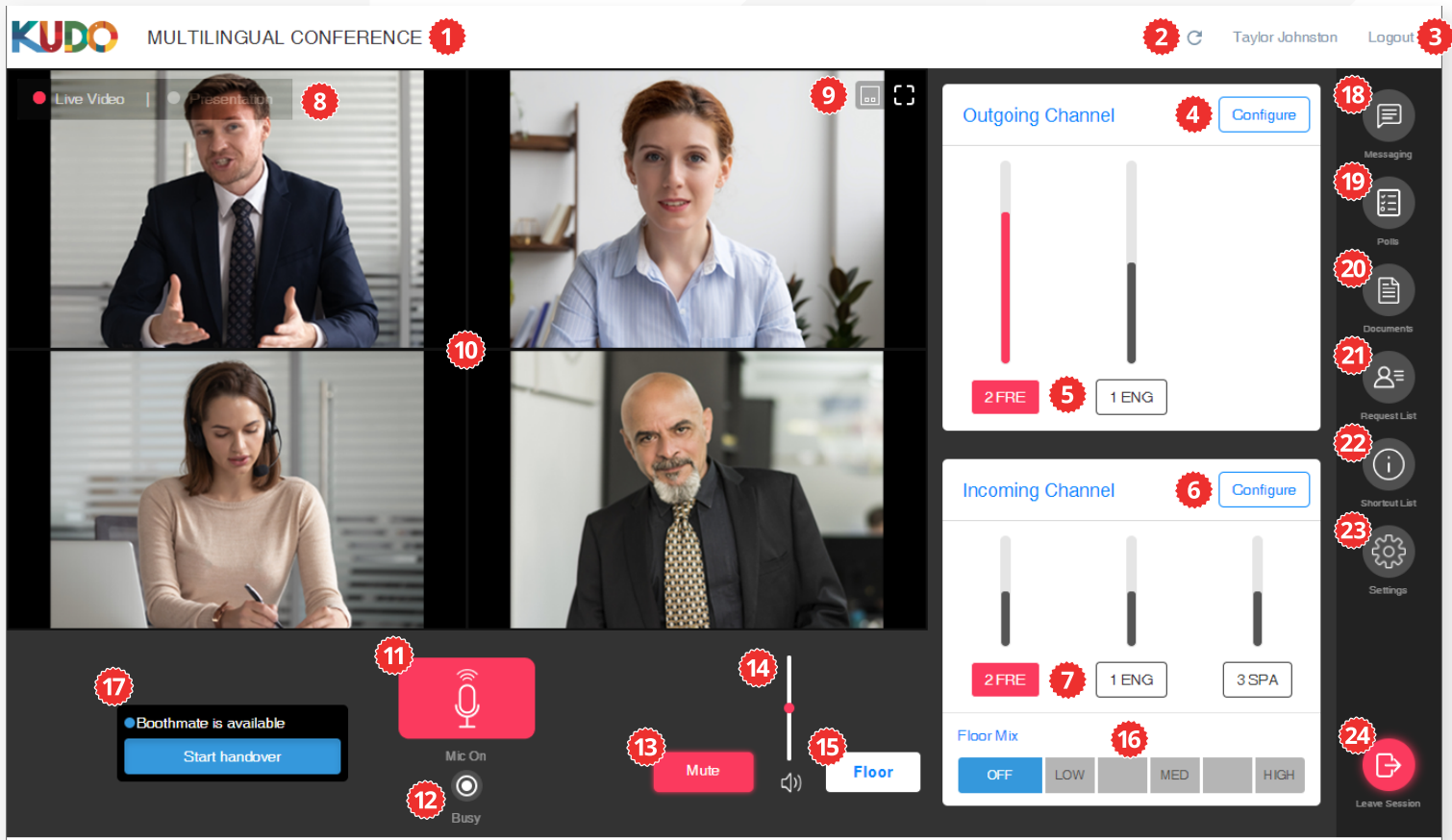
## 18 Interface and Media Settings

Select the interface language, and mic / speaker / camera to use on the meeting.

## 19 Leave Session

Leave the session without logging out from your KUDO account.

Meet the KUDO Interpreter Interface. The console includes the exact same functionalities you would find in a conventional interpreters' console hardware.



## 1 Meeting Name

Indicates the name of the session being interpreted.

## 2 Refresh

Click to refresh the session.

## 3 Profile / Logout

Click your name to view or edit your profile. Click Logout to exit the session and log out from your KUDO account.

## 4 Configure Outgoing Channel

Select the language(s) you may need to use.

## 5 Outgoing Channel Selection

Press a button to select the language you will be speaking. Configuring doesn't automatically select a language.

## 6 Configure Incoming Channel

Select auxiliary languages in case you need to take relay.

## 7 Incoming Channel Selection

Press a button to quit the Floor and select a relay incoming language.

## 8 Video Input Selection Tabs

Alternate Live Video or Presentation to display in the video window.

## 9 View Layout Toggles

Switch between gallery or single view (left btn). Expand the video window to full screen (right btn).

## 10 Video Window

Embedded video or presentation window.

## 11 Microphone On/Off Button

Activate your microphone to start interpreting. A RED button indicates it is LIVE (hot). A GREEN button means it is off.

## 12 Channel Busy Button

This button will light up (blue) if the channel you're trying to enable is occupied.

## 13 Mute (Cough) Button

Mute/unmute. When active, the mic button (13) will display as crossed.

## 14 Incoming Volume Control

Use the slider and loudspeaker icon to control and mute the sound level you hear.

## 15 Floor Incoming Selector

Default incoming channel. It brings you the audio of everything that is said on the Floor

## 16 Floor Mix Control

Control the dual listening feature to hear Floor and incoming channel simultaneously

## 17 Boothmate Handover

Control and messages for the Handover feature.

## 18 Messaging Tab

Select the chat channels to communicate with fellow interpreters and operator.

## 19 Polls Tab

Access to poll results.

## 20 Documents Tab

Download available documents. A second screen is recommended to display them.

## 21 Request List Tab

Access to the lineup of speakers who have requested the Floor.

## 22 Shortcut List

Display a list of available keyboard shortcuts.

## 23 Interface and Media Settings

Select the interface language, and mic / speaker / camera to use on the meeting.

## 24 Leave Session

Leave the session without logging out from your KUDO account.

The KUDO Interpreter Interface can also be controlled with keyboard shortcuts for added convenience.

## Function



Windows



Mac

### General Controls

Microphone Mute	ctrl + m	alt + k
Microphone ON/OFF	ctrl + alt + m	⌘ + alt + k
Live Video / Presentation Switch	ctrl + alt + v	⌘ + alt + v
Floor	ctrl + alt + f	alt + f

### Outgoing / Incoming Languages - (left to right)

Outgoing Language 1	ctrl + alt + 1	⌘ + alt + 1
Outgoing Language 2	ctrl + alt + 2	⌘ + alt + 2
Outgoing Language 3	ctrl + alt + 3	⌘ + alt + 3
Incoming Language 1	ctrl + alt + 4	⌘ + alt + 4
Incoming Language 2	ctrl + alt + 5	⌘ + alt + 5
Incoming Language 3	ctrl + alt + 6	⌘ + alt + 6

### Side Menu

Chat	ctrl + alt + c	⌘ + alt + a
Poll	ctrl + alt + x	⌘ + alt + x
Document	ctrl + alt + d	⌘ + alt + e



The KUDO Interpreter Interface can also be controlled with the custom keypad and volume knob. Follow the instructions below to set yours up.

## 1. Download

DOWNLOAD FILES



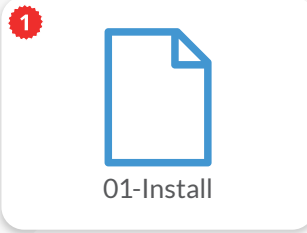
01-Install



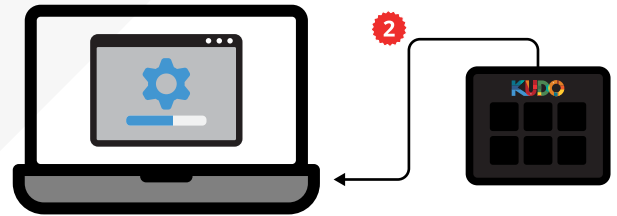
02-KUDOProfile

Download the two files from the link above.

## 2. Install and connect

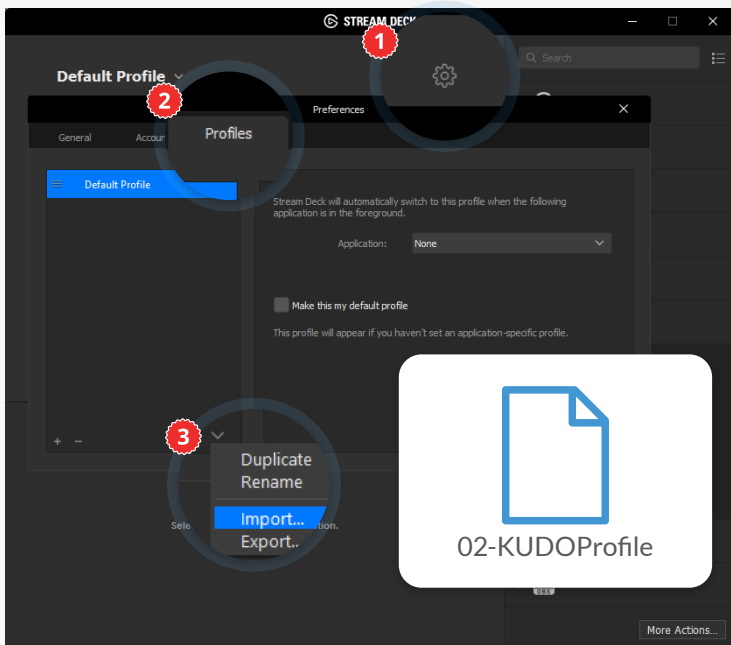


01-Install



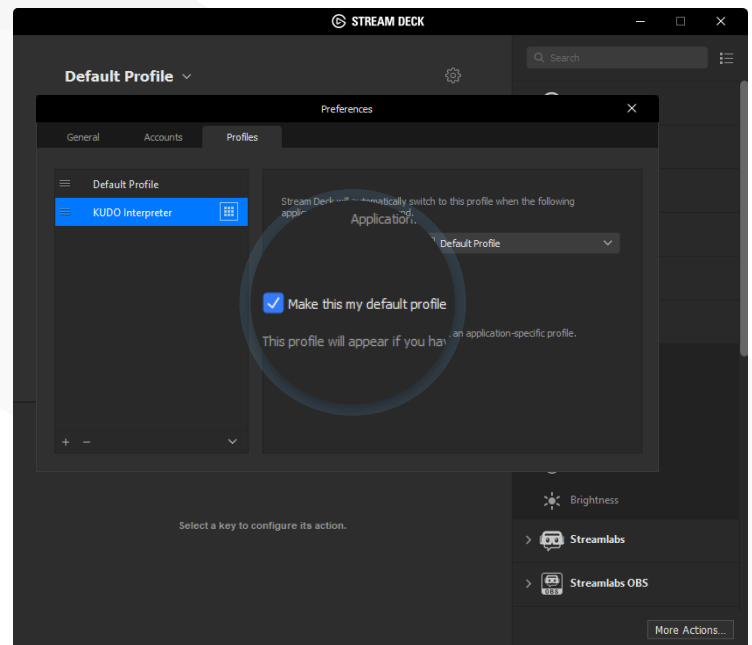
- 1 Install the keypad app in your computer (01-Install).
- 2 Connect the KUDO keypad to a USB port on your computer and launch the app.

## 3. Import profile



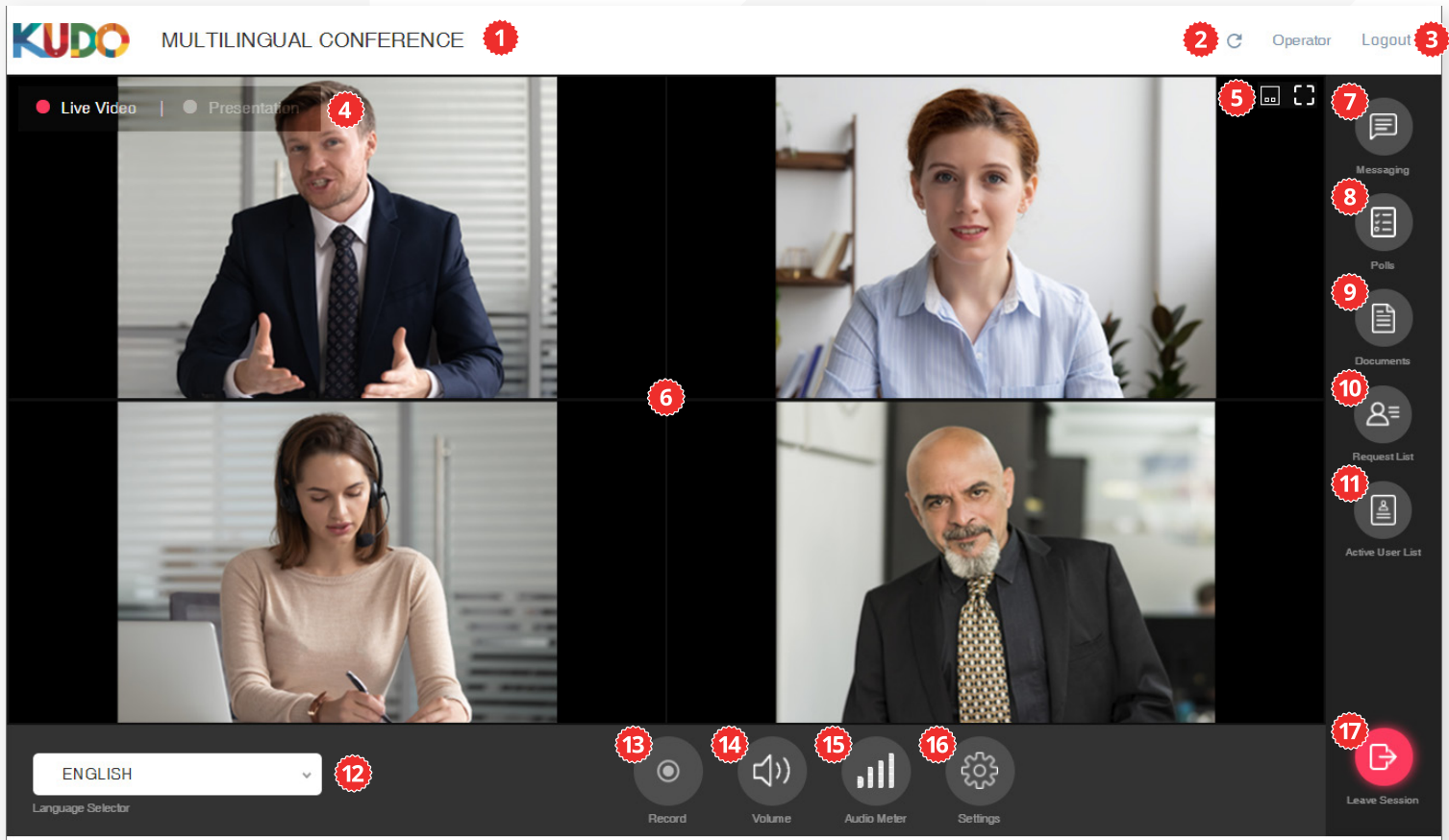
- 1 On the app window, open settings.
- 2 Go to the Profiles tab.
- 3 Click on the down arrow, select Import, and browse to the profile file you downloaded previously (02-KUDOProfile).

## 4. Set profile as default



On the **Event Details** page, click on **Add Session** button. You can also edit the Event details and see a list of all sessions already added.

Meet the KUDO Operator Interface. It includes the functionalities needed to control the course of a session taking place on KUDO.



## 1 Meeting Name

Indicates the name of the session.

## 2 Refresh

Click to refresh the session.

## 3 Profile / Logout

Click your name to view or edit your profile. Click Logout to exit the session and log out from your KUDO account.

## 4 Video Input Selection Tabs

Alternate between Live Video or Presentation Mode to be displayed in the video window.

## 5 View Layout Toggles

Switch between gallery or single view (left btn). Expand the video window to full screen (right btn).

## 6 Video Window

Embedded video or presentation window.

## 7 Messaging Tab

Select the chat channels to communicate with interpreters, operators and participants.

## 8 Polls Tab

Start/Stop polls, publish and view results.

## 9 Documents Tab

Access to upload and view documents shared on the session.

## 10 Request List Tab

Access the speakers who have requested the Floor, accept or decline their request.

## 11 Active User List Tab

Overview of current connected users, turn on/off their mic and camera.

## 12 Language Selector

Select an interpreted language to follow from the list.

## 13 Record Button

Click the button to start/stop recording an ongoing session.

## 14 Incoming Volume Mute

Mute all incoming sound. When active, the button will turn red and crossed.

## 15 Incoming Audio Meter

Visual meter of the level of incoming sound.

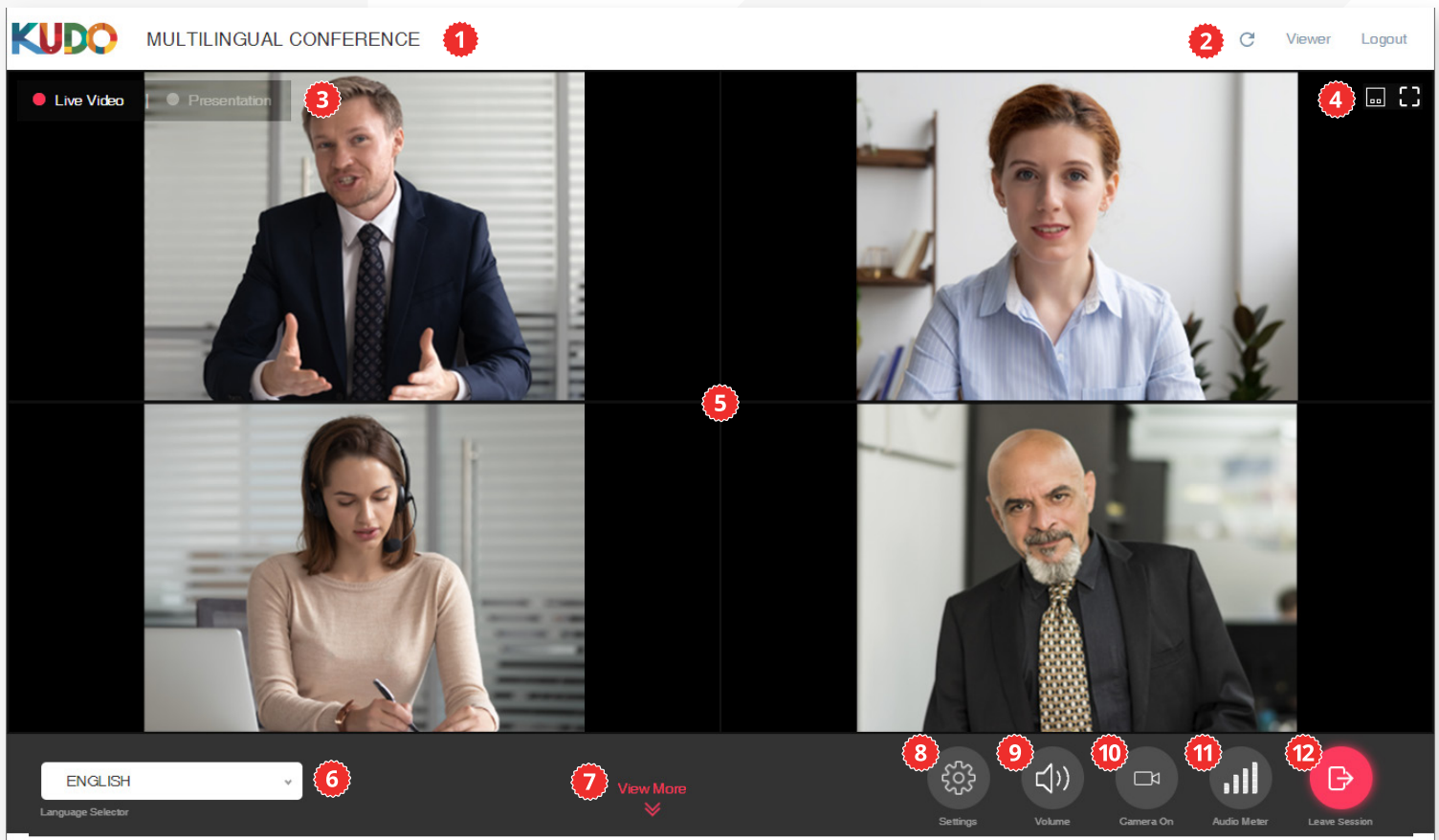
## 16 Interface and Media Settings

Select the language for the interface, and the mic/speaker/camera to use on the meeting.

## 17 Leave Session

Leave the session without logging out from your KUDO account.

Meet the KUDO Viewer Interface. This is a simplified version of KUDO where the viewer can follow a meeting without taking part in it.



## 1 Meeting Name

Indicates the name of the session.

## 2 Refresh / Logout

Click to refresh the session or exit it and log out from your KUDO account.

## 3 Video Input Selection Tabs

Alternate between Live Video or Presentation Mode to be displayed in the video window.

## 4 View Layout Toggles

Switch between gallery or single view (left btn). Expand the video window to full screen (right btn).

## 5 Video Window

Embedded video or presentation window.

## 6 Language Selector

Select an interpreted language to follow from the list.

## 7 View More

Display the details of the meeting.

## 8 Interface and Media Settings

Select the language for the interface, and the mic/speaker/camera to use on the meeting.

## 9 Incoming Volume Mute

Mute all incoming sound. When active, the button will turn red and crossed.

## 10 Camera On/Off

Show or hide the video from the participants in the meeting.

## 11 Incoming Audio Meter

Visual meter of the level of incoming sound.

## 12 Leave Session

Leave the session without logging out from your KUDO account.