

Workshop on Forests, Rangelands and Climate Change in the Nile Basin

Activities and Approaches of FAO in Climate Change

**Addis Ababa, Ethiopia
9-11 December 2013**

**Susan Braatz
FAO, Rome**



FAO support for national, regional and global action

- **Data and knowledge:** impact and vulnerability assessment & adaptation; for analyzing and realizing mitigation options
- **Institutions, policies and financing** that facilitate adaptation and mitigation
- **Planning** for sustainable and climate-smart management of land, water and biodiversity
- **Technologies, practices and processes** for adaptation and mitigation
- Strengthened mechanisms for fair and effective **stakeholder engagement**, incl. of small scale farmers and forest communities
- Effective **cross-sectoral coordination**



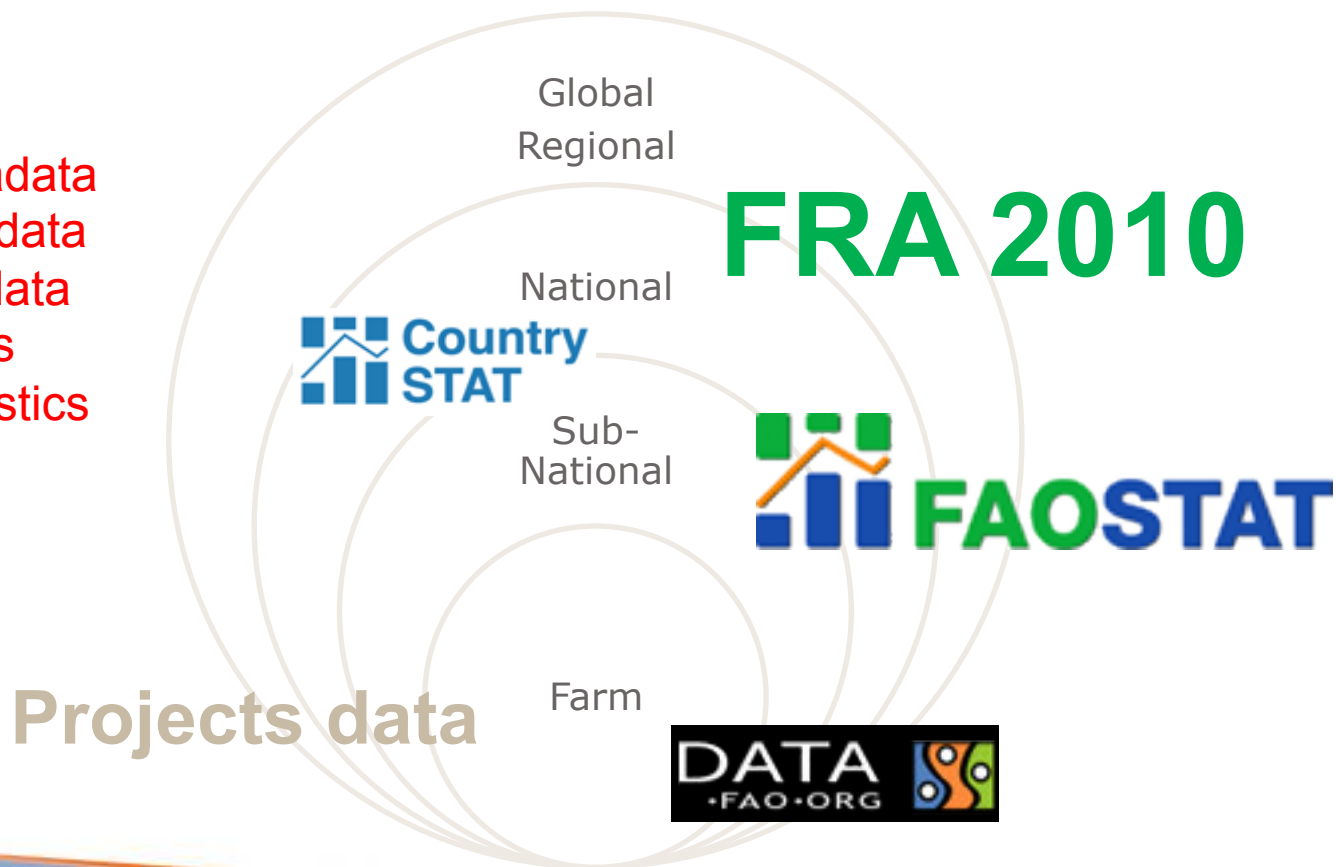
Approach to CC support

- **Country-led** action to support country priorities
- Support **integrating CC** into national plans and programmes
- Facilitate strong **stakeholder engagement**
- Promote **traditional and improved practices**
- Promote **equitable benefits-sharing** & actions to address local needs and benefit local communities
- **Integrated and cross-sectoral** approach (dryland management - GGWSSI and watershed level action)



Data collection, databases, statistics and analysis

Metadata
GIS data
RS data
Maps
Statistics
Etc.



Data collection and sharing is a challenge and an opportunity



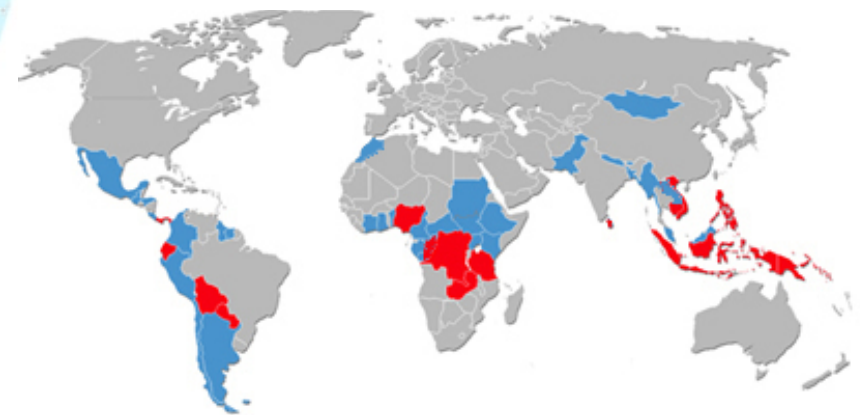
Support to forest monitoring and assessment and NFMS



NFMA and FAO-Fin

www.fao.org/forestry/fma
www.un-redd.org

FAO provides technical assistance in response to country needs in collaboration with national authorities, experts and a wide range of stakeholders, thus supporting sustainability and country ownership.



■ Countries receiving support to National Programmes
■ Other partner countries

UN REDD Programme



Climate Smart Agriculture

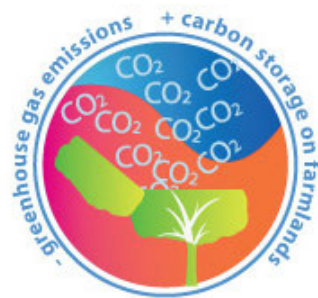
SUSTAINABLY INCREASES



STRENGTHENS RESILIENCE



REDUCES AGRICULTURE'S CONTRIBUTION TO CLIMATE CHANGE



Agriculture that *sustainably increases productivity, increases resilience (adaptation), reduces atmospheric greenhouse gases (mitigation) while enhancing the achievement of national food security and development goals*

Integrated and
landscape approach

Main Programmes



FAO-Adapt: an umbrella to FAO's adaptation activities

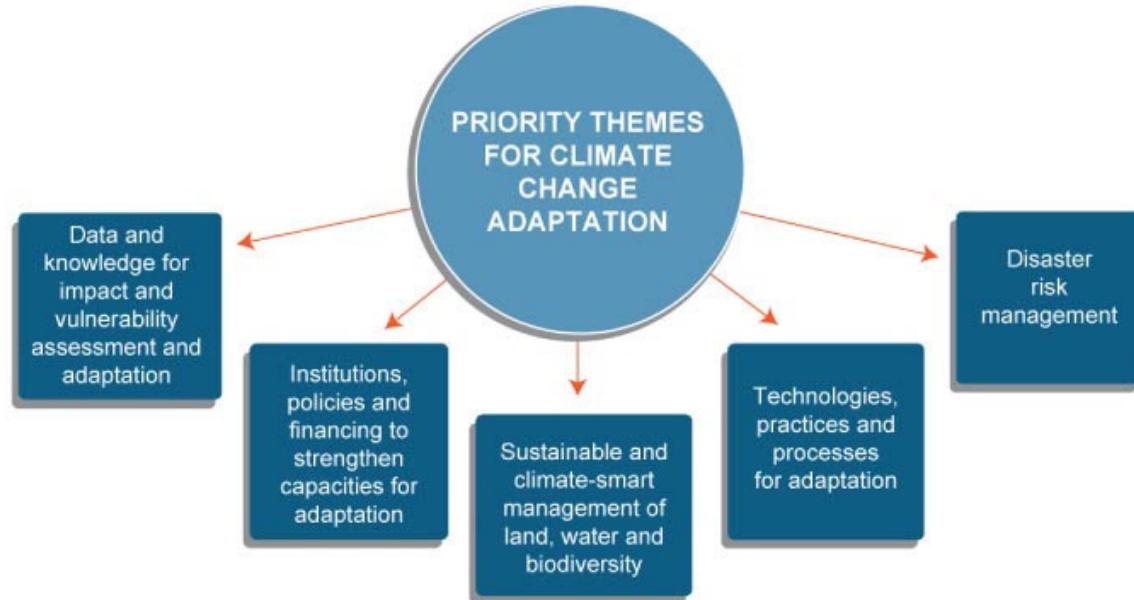


MICCA (Mitigation of Climate Change in Agriculture)



Five global priority themes and related actions that support adaptation

- Adaptation is addressed all across the agriculture, forestry and fisheries sectors.
- FAO-ADAPT brings together FAO's efforts on adaptation: coordinated resource mobilization and programming.



Projects by region:

Africa: Mali, Morocco, Mozambique, Lesotho / **Asia:** Philippines, Bangladesh, China: Qinghai, China: Juye (Disaster Risk Reduction), India, Nepal, Vietnam / **Europe:** Turkey, Regional / **Latin America and the Caribbean:** Tropical Andes, Nicaragua, El Salvador, Saint-Lucia (Disaster Risk Reduction), Belize (Disaster Risk Reduction), Regional project Caribbean (Disaster Risk Reduction), Ecuador, Colombia, Guatemala, Peru, Uruguay / **Near East:** **Egypt**



Mitigation of Climate Change in Agriculture Programme (MICCA)

- Better **knowledge support**: data on greenhouse gas emissions and analysis of mitigation potentials
- **Capacity building**: climate smart policies & practices
- **Communities of practice**: linking practitioners all around the world
- Advice on **policy options**: policy decision support

Pilot projects:

- **Kenya**: reducing the CC 'footprint' of the dairy industry
- **Tanzania**: combining conservation agriculture w/ agroforestry

Global reviews of mitigation potential: agricultural practices, water management agroforestry

Mitigation projects database

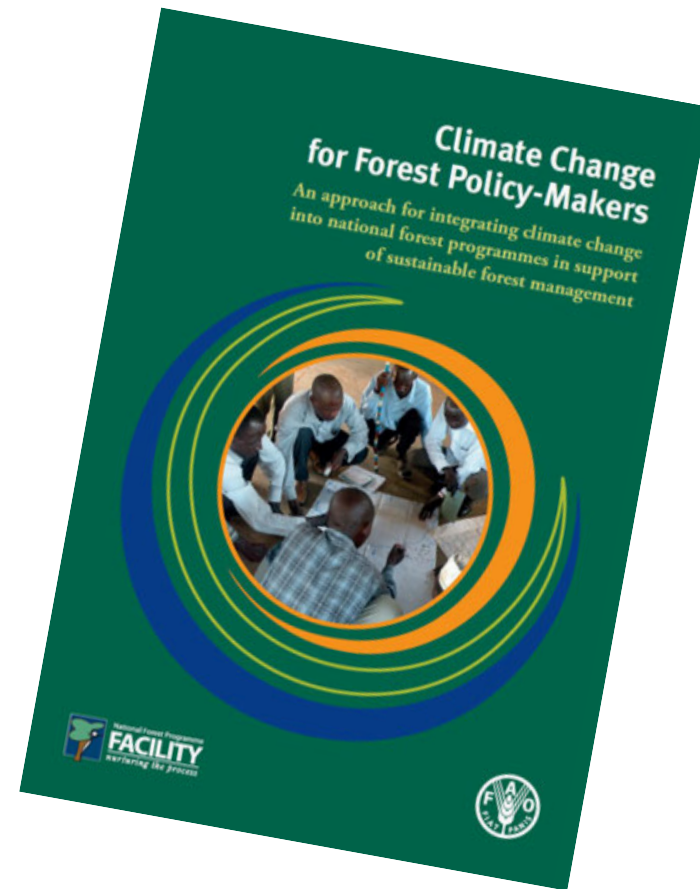


Tools to facilitate national action in CC

Climate change for forest policy-makers

Objectives:

- Assist forest policy decision makers **identify and prioritize needed changes in policy framework**
- Identify **forestry-related issues to be considered in CC policies/ strategies**

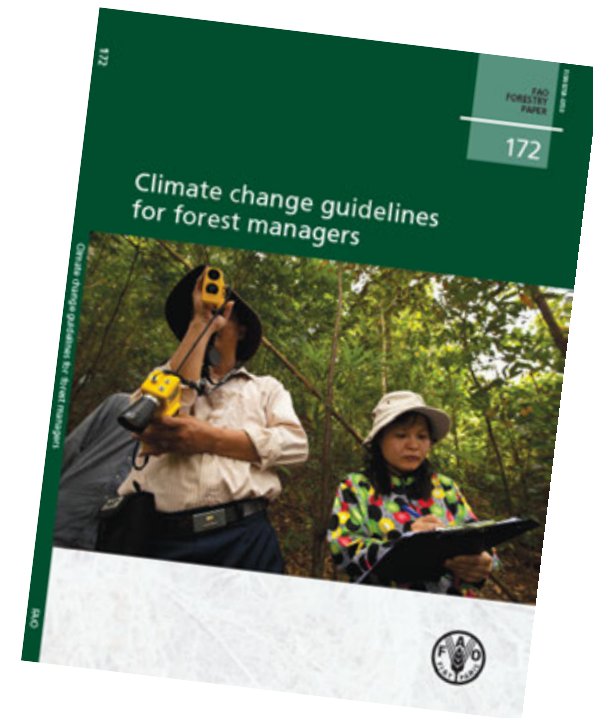


Tools to facilitate national action in CC

Climate change for forest managers

Objective:

to provide guidance to forest managers on the identification and assessment of **options for adjusting forest management plans and practices** in response to and in anticipation of climate change



Use of Guidelines for Forest Managers

E.g. Kenya

- National stakeholder workshop convened by KFS
- Identification of three pilot sites
- Stakeholder meetings at three pilot sites; identification of needed actions
- Action plan for each of the sites prepared
- Community-based activities to be supported by the project and KFS identified
- Experience of 3 sites to be shared at end of 2014 and next steps to be agreed upon



Fostering regional cooperation in forests and climate change

- **Southern Africa**
- **Caribbean**
- **Eastern Europe and Central Asia**
- **Asia and the Pacific**
- **Nile Basin**



FAO: fostering regional cooperation



Opportunities for Nile Basin

- The Nile Basin is **highly vulnerable** to climate change and merits support
- Nile Basin is geographic unit where an **ecosystem approach** will be effective
- Working at landscape level helps **capture synergies between adaptation and mitigation** and between sectors
- Working at regional level creates **economies of scale** and facilitates transboundary action
- **Traditional** coping strategies and integrated land use systems in Nile Basin is a valuable **knowledge** base
- The GGWSSI provides an opportunity for important synergies for **sharing experiences and scaling up**
- Using climate change as an entry point can heighten **political support and leverage financing** for improved land management



Thank you

