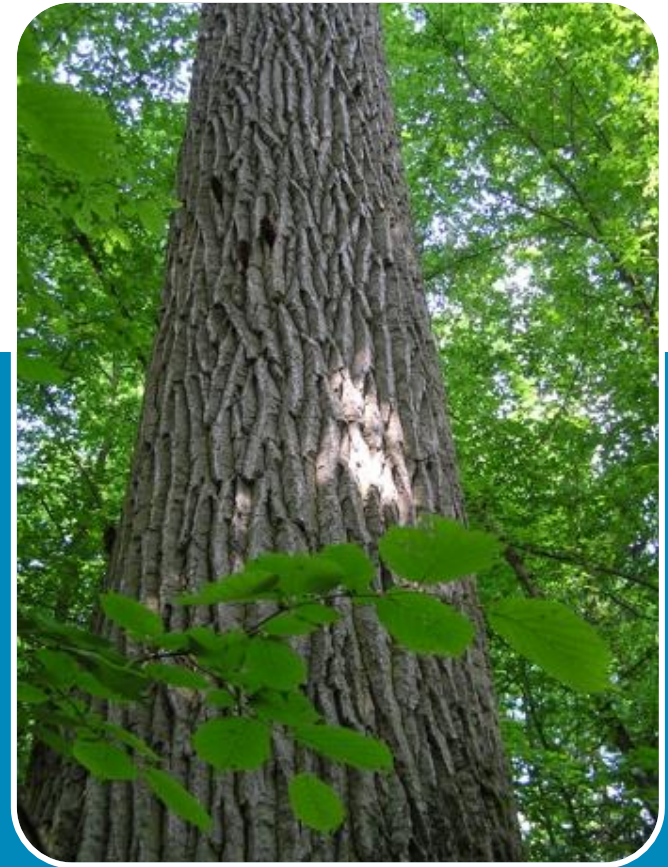




MINISTRY  
OF THE ENVIRONMENT



# FOREST MANAGEMENT IN POLAND

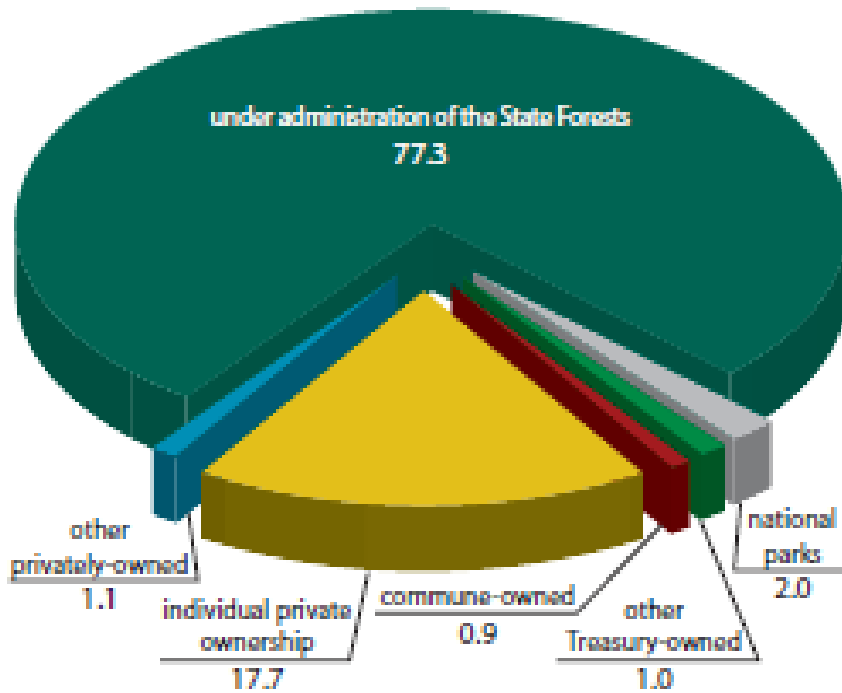


Anna Żornaczuk-Łuba  
Department of Forestry and Nature Conservation  
Białowieża, 21.04. 2015



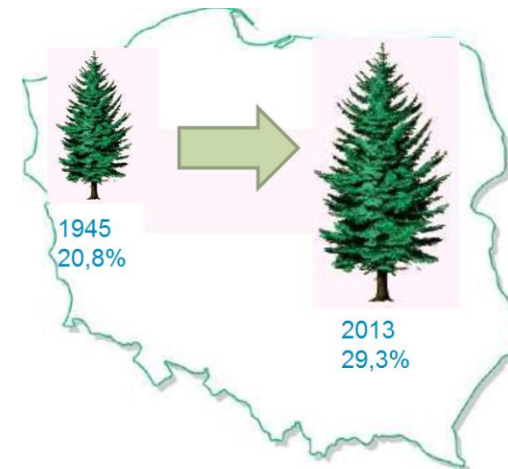
# Forests in Poland

## Forest cover in total - 9,1 mln ha



Ownership structure of forests in Poland (Central Statistical Office)

- 7,6 mln ha managed by the State Forests National Forest Holding
- 1.6 million ha owned by approximately 1.5 – 2 million forest owners (an average 1 ha/owner)





## Legal bases

- The Forest Act (1991)
- The Act on Protection of Forests and Agricultural Soils (1995)
- The Forest Reproductive Material Act (2001)
  
- The Nature Conservation Act (2004)
- The Environmental Protection Act (2001)
- The Act on sharing information about the environment and its protection, public participation in environmental protection and environmental impact assessment (2008)





# National policies and programmes

- Safety and Environment Strategy
- National Biodiversity Strategy
- National Forest Policy
- National programme for the augmentation of forest cover
- National Forest Programme (under development)





# Ministry of the Environment

## Department of Forestry and Nature Conservation

### Forestry

Forest management

Forestry schools and  
forestry property

International  
cooperation

Hunting and game  
management

### Nature protection

National Parks

Environmental  
conventions

Protection of  
environment

GMO

#### CENTRAL PUBLIC AUTHORITIES

 General Directorate for Environmental Protection

#### SUPERVISED UNIT DEPARTMENT

 The State Forests National Forest Holding

 Forest Reproductive Material Office

#### RESEARCH & DEVELOPMENT UNITS

 IBL Forest Research Institute

#### NATIONAL PARKS





MINISTRY  
OF THE ENVIRONMENT

# Structure for management



## General Directorate for Environmental Protection

Regional Directorate for Environmental Protection (16)

- ❑ Control of the investment process
- ❑ Sharing information about the environment
- ❑ Management of nature conservation

## The State Forests National Forest Holding



Directorate General of the State Forests

Regional Directorate of the State Forests (17)

Forest Districts (430)

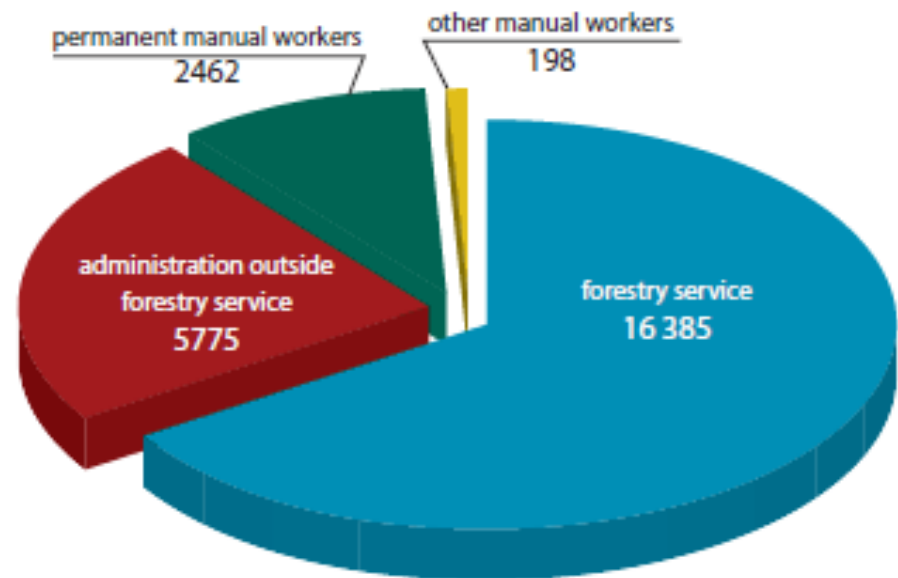
- ❑ administrates the property on behalf of the State Treasury
- ❑ operates on a self- financing basis



# The green economy

Forestry sector is an important sector of the Polish economy.

It provides around 2% of the GDP and offers direct employment to 25 thousand people, and indirect employment to 300 thousand in the forest and wood industry.



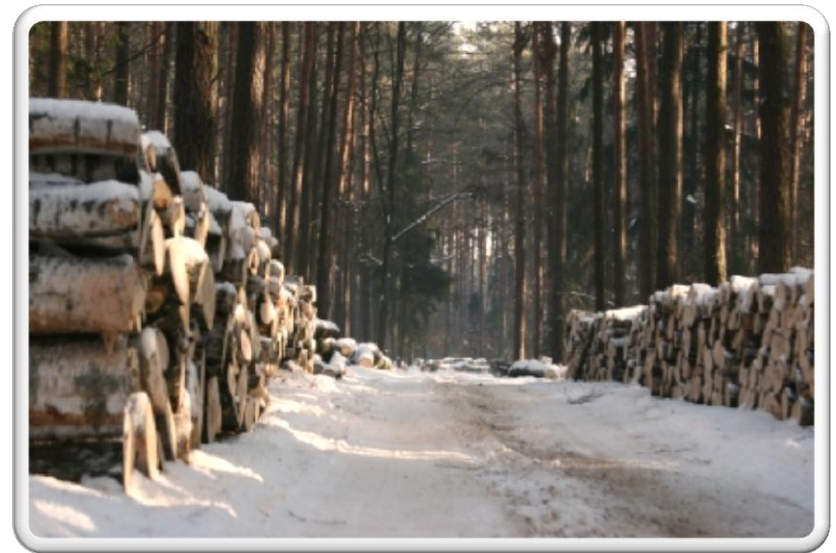
*Employment structure in the State Forests in 2012*



# The green economy

Since 1990 the amount of timber supplied to the market has **more than doubled**, to 36 million m<sup>3</sup>, with no detriment to the forests.

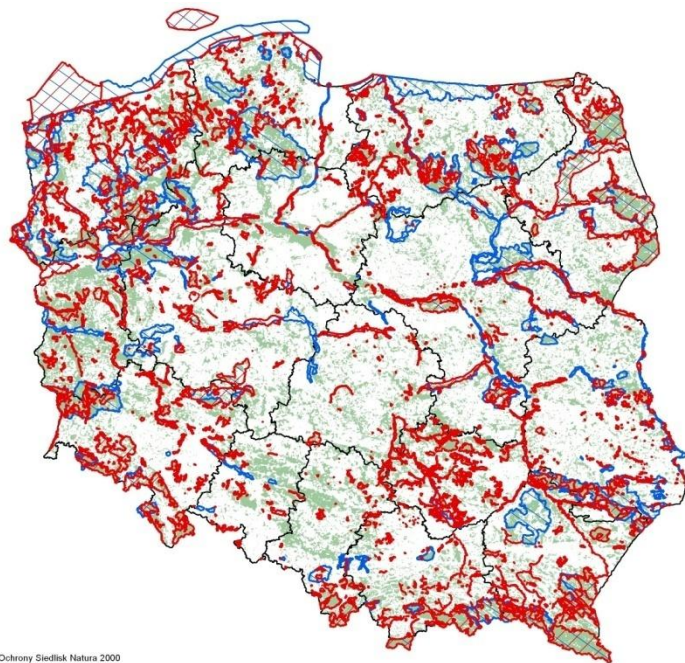
The State Forests, which manage over 77% of forests in Poland, harvest timber in a exemplary way. Our forests hold international FSC and PEFC certificates, proving our belief in sustainable and ecologically-sound forest management.







# Natura 2000



■ Specjalne Obszary Ochrony Siedlisk Natura 2000  
■ Obszary Specjalnej Ochrony Ptaków Natura 2000  
■ granice województw

- 29% of Poland
- 49 % forests
- 40% of the State Forests

obszary Natura 2000



# Ongoing processes in support of policy implementation

- Development of National Forest Programme
- Certification processes:
  - FSC - 7 004 771 ha (5th in the world)
  - PEFC
- Promotional Forest Complexes
  - (25 on the area of 1 222 537 ha)
- The Forest Data Bank
- National Forest Inventory

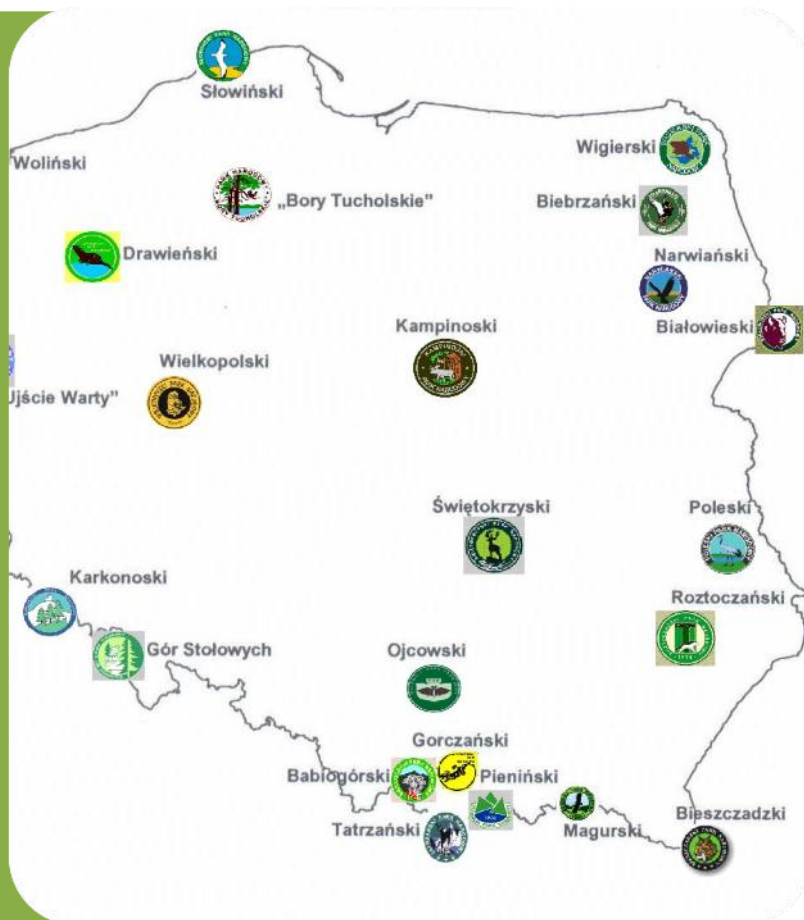


**Polish State Forests awarded the 2013 UNESCO Prize for Environmental Preservation**





# National Parks



## 23 national parks

**Total area:** 316 748.45 ha (1% of the country area), including:

- subject to strict protection: 67 503,4 ha (21% of the parks area);
- actively protected : 190 323,4 ha (60% of the parks area);
- landscape protected : 58 921,65 ha (19% of the parks area).





# Białowieża National Park

The world-unique **Białowieża Forest Biosphere Reserve**, created in 1977 (in 1979 the Białowieża Primeval Forest was inscribed on the UNESCO World Heritage List), was enlarged in 2014.





# The Bison - A success story



In the beginning of the 20th century this species was close to extinction.

Mainly due to breeding and reintroduction guided by foresters, the bison population in Poland grew up to 1300 individuals now, the majority of which resides in the State Forests.



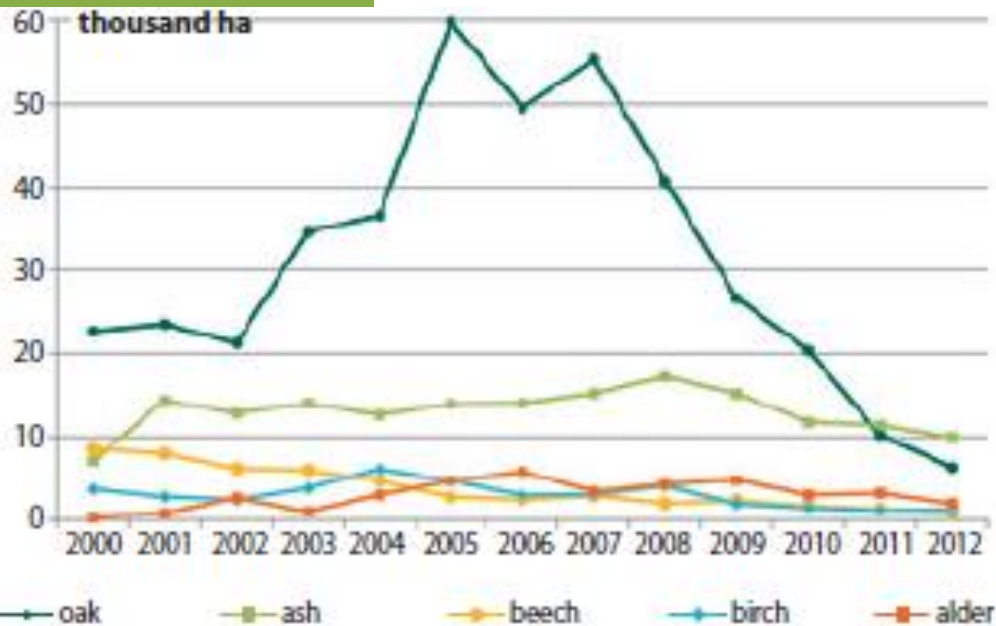


# The challenges of climate change

How has the changing climate effected our forests?

The cyclic occurrence of oak decline, observed since the 1970s, has been attributed to extreme climate conditions, such as unusually high or low temperatures, long-lasting droughts and changes in groundwater level.

With the changing climate our forests will need to adapt and we have to help them do that.

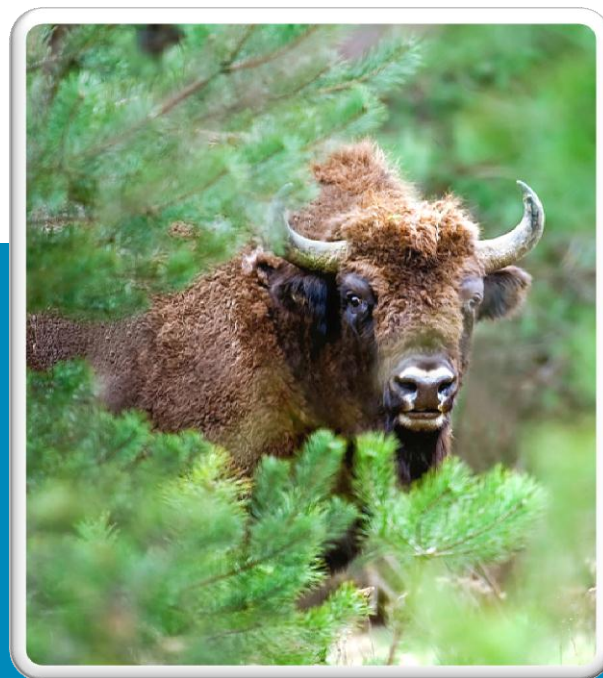


*Area of dieback of selected broadleaved tree species in the State Forests in the years 2000–2012*





MINISTRY  
OF THE ENVIRONMENT



THANK YOU FOR YOUR  
ATTENTION

Anna Żornaczuk-Łuba  
Department of Forestry and Nature Conservation  
Białowieża, 21.04. 2015