



# **European State Forests: Current trends, Co-operation, Challenges ahead**

**Piotr Borkowski**

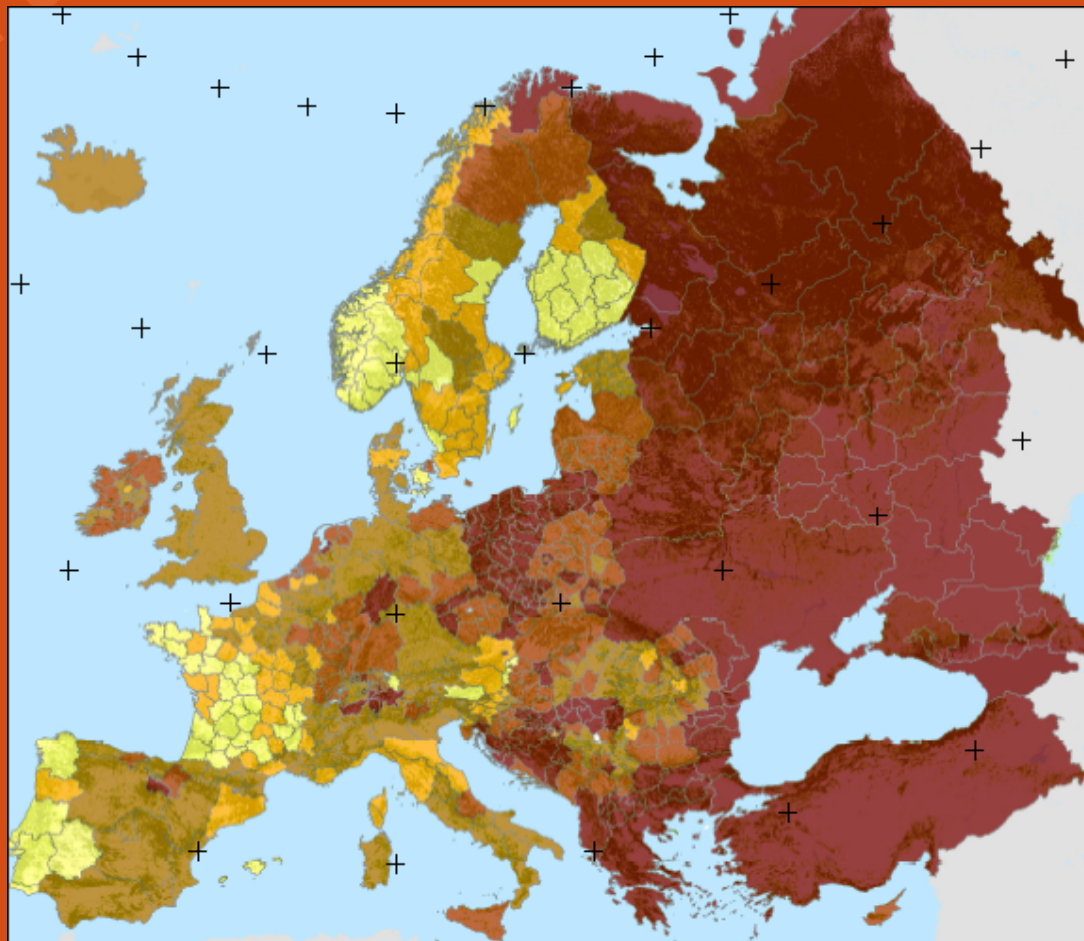
Executive Director

European State Forest Association (EUSTAFOR)

**Climate Change Guidelines for Forest Managers**

April 21-23 2015, Białowieża, Poland

# Public forests in Europe (source EFI)



## Public forests in the EU – basic info

- Around 40 % of the forests is publicly owned
- Public ownership dominates in most of the eastern and south-eastern EU Member States
- The average size of public forest holding - more than 1000 ha (considerable differences among MS) based on data for 24 EU Member States

## Public forests in the EU – basic info /2/

- Publicly owned area decreased by a total of 2.9 % between 2000 and 2010
  - Decrease in ten EU Member States: RO, SI, LT, less in AT, FI, LV, EE and UK
  - In new MS due to the restitution of land to former owners, while other countries sold their public forest assets.

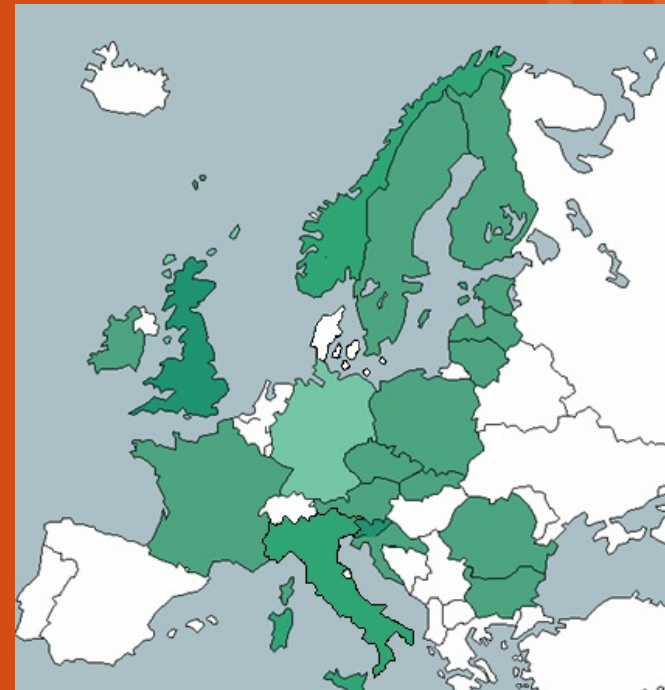
# EUSTAFOR – cooperation platform

- Established 2006
- Non-profit international organisation based on Belgian law
- Membership open to State Forest Management Organisations (SFMOs) from all European countries
- Headquarters: European Forestry House in Brussels



## EUSTAFOR at a glance

- 29 members from 21 countries
- Total forest area ~46 Mha (28% of EU forest area)
- Protected forest area ~13 Mha
- Certified forest area ~28 Mha (PEFC, FSC)
- Annual increment ~155 Mm<sup>3</sup>
- Annual harvest ~119 Mm<sup>3</sup>
- Number of employees ~118 000



## Overall Objectives

- Represents state forests in EU and pan-European policy making
- Promotes the common interest and specific features of state forestry
- Supports SFMOs in further enhancing sustainable and responsible forest management from economic, social, cultural and ecological points of view

# Vision and Mission

- Vision:  
Voice of state owned forestry in Europe
- Mission:  
Supporting and strengthening member organisations in sustainable development of their forests and sharing know-how and experiences among its members



## What does EUSTAFOR do?

- Contributes to forest policy decision-making in the EU (European Parliament, European Council, European Commission) through sharing sound practical knowledge and experience of its members
- Lobbies for the state forests' interests
- Closely works with other stakeholders in the forest sector (other ownerships, forest-based industry, research community and environmental NGOs)
- Provides a platform for co-operation and experience exchange among its members

## EUSTAFOR activities (1)

- analyzing the existing legal frameworks, policy processes and initiatives in the EU with a view to enable sustainable development of state forests
- developing and delivering positions on emerging issues based on professional experience gained in field-level forest management
- active participation in various initiatives related to forests by the EU and other actors

## EUSTAFOR activities (2)

- Serving as a focal point that provides guidance on developments of relevant EU legislation and policies
- Facilitating and enhancing know-how exchange and networking among SFMO
- Informing members on topics and issues relevant for forests at the EU agenda
- Building-up networking with other stakeholders in Brussels
- Promoting research and innovation through supporting FTP and participation in EU funded research

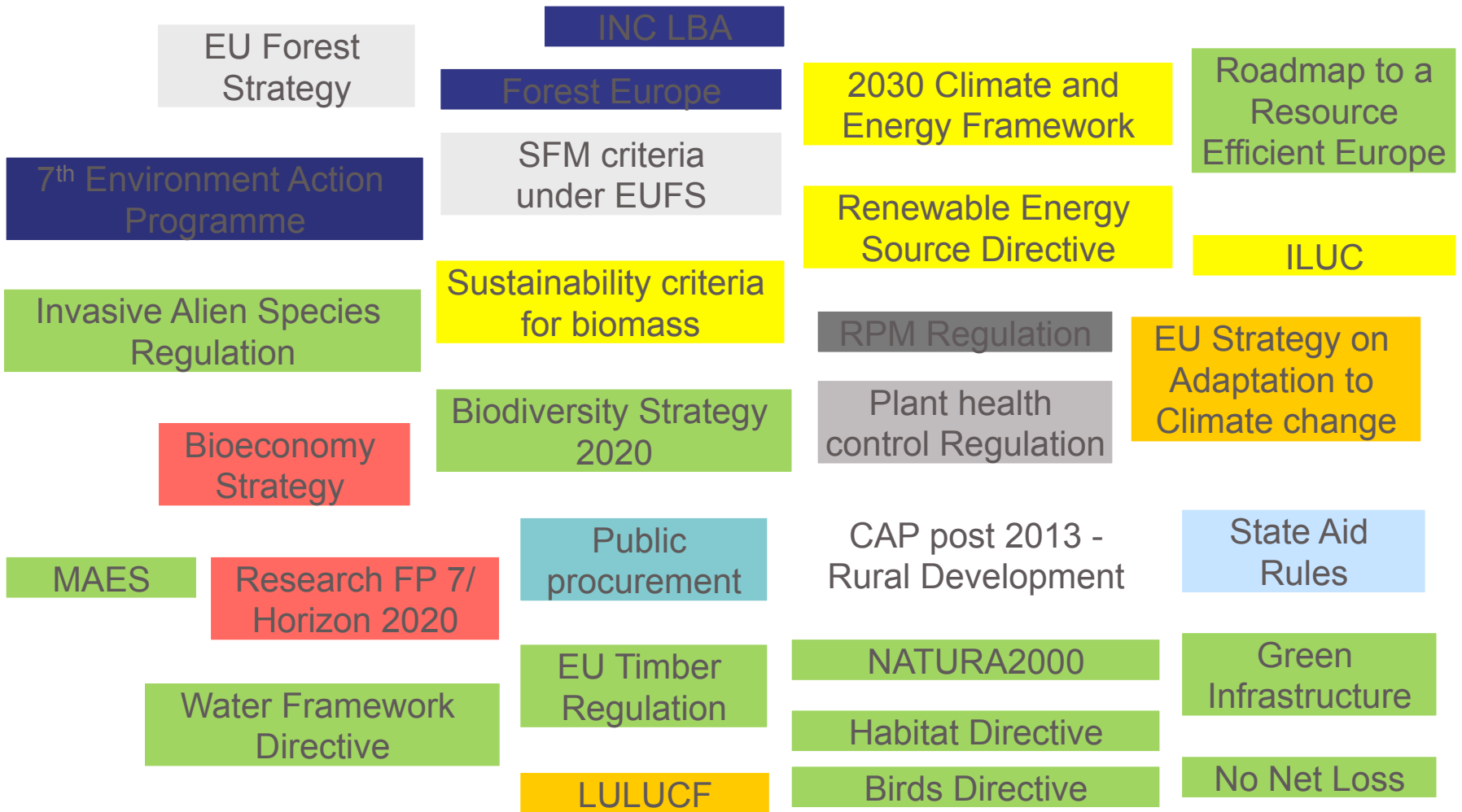
## Work modalities

- EUSTAFOR Working groups on actual topics
  - Strategic and institutional challenges of SFMO/risk management
  - Communicators' Networkcompleted:
  - Natura 2000 in forests, Biomass and Bioenergy, Ecosystem Services, Climate Change
- Information exchange
  - keep the association's members regularly informed on topics and issues that concern the whole of Europe
  - Newsletter “eustafor.express”

# Challenges of today

- Sustainability & multifunctionality of forest management
  - Economic effectiveness
  - Protection, conservation, development of forests
  - Growing societal demands – continuous provision of benefits
- Integrity of the forest sector and forest sector policy
  - New EU Forest Strategy
  - Cross-sectoral linkages forests (Climate change, bio-energy, biodiversity, plant health, etc.)
- Legal and institutional challenges for the state forests in Europe

# EU Forest Policy: a complex scattered puzzle

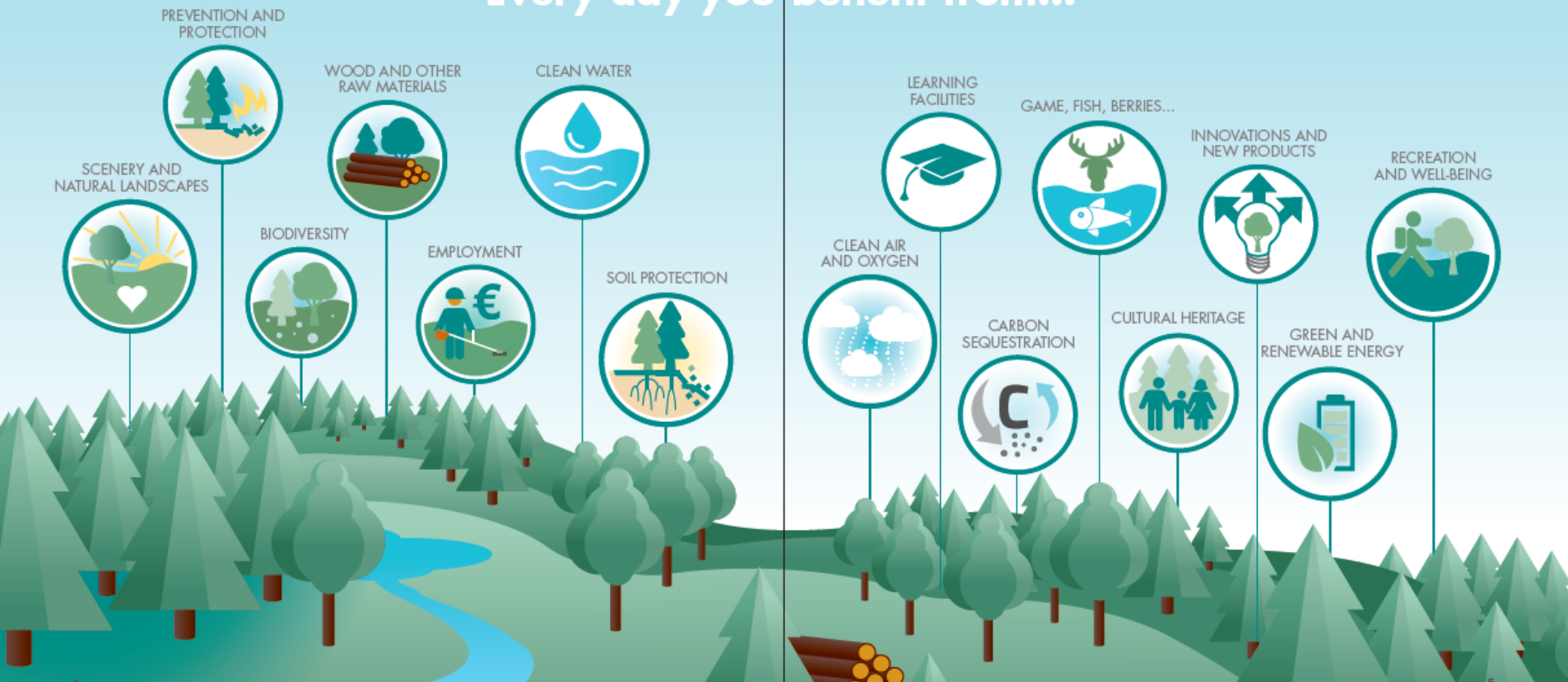


# Current agenda

- EU level:
  - New EU Forest Strategy - Sustainability Criteria for FM (energy context)
  - Biodiversity Strategy 2020 (GI, NNL), N2K and Forest management – Fitness Check
  - Climate & Energy Package 2030 (LULUCF, biomass policy)
  - Bioeconomy, ILUC, cascade use, ...
  - Implementation of EU Timber Regulation
- Pan-European level:
  - Negotiations on a LBA on forests - at serious risk to fail or already failed
  - Co-operation with FAO & UNECE

# State Forests & bio-economy

Every day you benefit from...





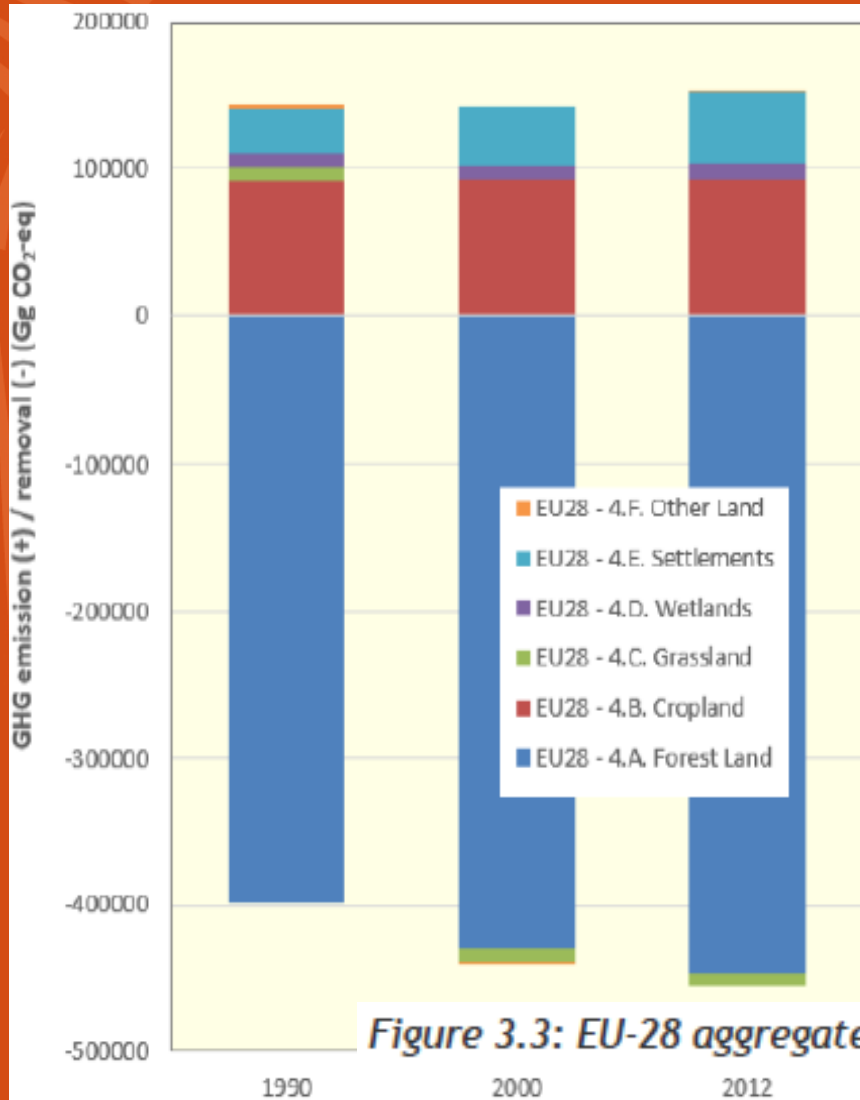
# Wood is all around you!



# State Forests & Climate Change

European Forestry  
in the Face of  
Climate Change  
EUSTAFOR Guidelines

- Conserving and increasing of forest land
- Maintaining & improving carbon balance
- Carbon storage in HWP and substitution effects



**Figure 3.3: EU-28 aggregate values for land categories in the LULUCF sector**

## EU Climate Policy development in 2015:

- Public Consultation on LULUCF ongoing – 3 options on the table for the land use sector



# Thank you

**Piotr Borkowski**

Executive Director

European State Forest Association (EUSTAFAFOR)

European Forestry House

Rue du Luxembourg 66

1000 Brussels

Phone: +32 2 239 2304

Mobile: +32 4 74989319

Fax: +32 2 219 2191

[www.eustafor.eu](http://www.eustafor.eu)